

THAMES DITTON TODAY

THAMES DITTON • WESTON GREEN • EAST MOLESEY



THE MAGAZINE OF THE
THAMES DITTON & WESTON GREEN RESIDENTS' ASSOCIATION

W I N T E R 2 0 2 2



COLETS
HEALTH & FITNESS
WWW.COLETS.CO.UK

MORE THAN JUST A GYM



Basil's
at COLETS
BRAND NEW BAR +
RESTAURANT

NOW OPEN!

Not-for-profit + independent

New members welcome

Options for all the family

Email today to arrange a tour

info@colets.co.uk

St Nicholas Road | Thames Ditton | KT7 0PW



Thames Ditton
& Weston Green
Residents' Association

THAMES DITTON TODAY

Published quarterly since 1970

Editorial Team

Libby MacIntyre & Sandra Dennis
editor@residents-association.com

Magazine Design

Guy Holman
14 Hayward Road, KT7 0BE
020 8398 1770

Distribution

David Youd
6 Riversdale Road
Thames Ditton KT7 0QL
020 8398 3216

Advertisement Manager

Verity Park
20 Portsmouth Avenue
Thames Ditton KT7 0RT
020 8398 5926

Contributors

You are welcome to submit articles or images. Please contact the Editorial Team well in advance of the next deadline February 5

Advertisers

Thames Ditton Today is delivered to an influential 5000 households throughout Thames Ditton, Weston Green and East Molesey. Contact Verity Park for rates for full page, half and quarter page advertising.

In this Issue:

News from the Residents' Association	7
Update from your Residents' Associations' Councillors at Elmbridge Borough Council	12
Update from Nick Darby, Surrey County Councillor	15
Nature and Climate Festival – a great success	17
Introducing The Reverend Ruth Phillips	21
Photography competition winners	23
Protecting our local green spaces and Thames landscape heritage	27
Sustainable investing	29
Flooding in Thames Ditton some good news.....	33
Meet your distributors - Jean Hipwell	35
Volunteering opportunities	39
Autumn crossword solution	42
Winter crossword	43
Services, Clubs, Societies and Groups.....	44
The Theatre at the Vera Fletcher Hall	46

Cover: Andy Anderson

www.residents-association.com

Officers and staff of the Association are volunteers, but we must fund costs of this magazine, administrative and election expenses, and other expenses such as spring bulb-planting and village Christmas trees. The subscription is only £5 per household. If you can contribute more, please do so. Subscriptions can be paid via our website www.residents-association.com; subscriptions (in an envelope please) may be left at Boots Pharmacy, 14 High Street, Thames Ditton or Thorkhill Road Pharmacy, 94 Thorkhill Road, Thames Ditton. Or mail to Membership Secretary Peter Haynes at 6 Onslow Gardens, Thames Ditton KT7 0JJ. Thank you.

DanceCraft
MM

"We believe that by encouraging our pupils to love dance and enjoy their classes it will not only be exercise for the body but for their hearts and minds too."

Specialists in Dance & Performance training for Pre-school to Senior School aged children.

Classes in and around Esher.

Contact: Maria at mias33@hotmail.co.uk
Call or text to: 07800 860898
or visit our website www.mmdancecraft.com

PAINTERS & DECORATORS

We are residential painters and decorators with 20 years experience, we offer wallpapering, painting and paint effects for internal and external decorating

We work in a clean and efficient manner, causing minimal disruption in your home and come highly recommended



Contact Clive Hogg
to discuss your
decorating needs

020 8339 0712

m: 07957 582296
e: clive.hogg.ch@gmail.com

15 Hampton Court Avenue, East Molesey, Surrey, KT8 0BG

THE Green OUTDOORS

TREE CUTTING / PRUNING
HEDGE CUTTING
GARDEN SERVICES & CLEARANCE
TREE PLANTING / STUMP REMOVAL
PRESSURE WASHING
& MORE

CALL 07745145433
--- Free Quote & Advice ---



THAMES DITTON AND WESTON GREEN RESIDENTS' ASSOCIATION

About the Association

Founded in 1934 our Association is a strong, locally based non-party-political organisation concerned with protecting the amenities and furthering the interests of residents.

We work to preserve and enhance the best in our attractive environment and the quality of life of everyone in our community.

Through regular meetings, social activities, our magazine and website we keep in touch with residents' views and we raise and spend funds for the benefit of the community, from tree and bulb planting to contesting unacceptable development projects.

With six Residents' Councillors covering the two electoral wards we have a strong voice on Elmbridge Council working with other Residents' Councillors to ensure that decisions are based on the needs of local communities and on good management rather than on party politics.

Our Residents' County Councillor, Nick Darby, represents our views at Surrey County Council.

President: Martin Wilberforce

7 River Avenue,
Thames Ditton 020 8398 4732

Vice President: Ruth Lyon,

11 Riversdale Road,
Thames Ditton 0208 398 3396

Vice President Tannia Shipley,

27 Lower Green Road, Esher 020 8398 2484

Surrey County Councillor: Nick Darby,

12 Basing Close, Thames Ditton 020 8398 2382

Thames Ditton Borough Councillors

Alex Batchelor,
12 Hayward Road,
Thames Ditton 07710 943140

Caroline James,
Laurel Cottage, 20 High Street,
Thames Ditton 07970 672723

Karen Randolph,
Deepfield, Giggs Hill Road,
Thames Ditton 020 8398 5005

Hinchley Wood & Weston Green Borough Councillors

Gill Coates,
The Oaks, Orchard Gate,
Esher 020 8873 3040

Janet Turner, 2 Montgomery Ave,
Hinchley Wood 020 8398 1565

James Crawshaw 07500 688632

Officers

Chair: Graham Cooke
23 Ashley Road, Thames Ditton 020 8398 8509

Vice-Chair: Libby MacIntyre
24 High Street, Thames Ditton 020 8398 5534

Hon. Treasurer: Christa Silverthorne
62 Thorkhill Road, Thames Ditton 020 8398 7101

Hon. Secretary: Florian Traub,
33 Portsmouth Avenue, Thames Ditton 020 8224 2880

Membership Secretary: Peter Haynes
6 Onslow Gardens, Thames Ditton 020 8398 6019

Conveners of Sub-Committees

Health and Community: Karen Randolph (see above)

Planning: Rhodri Richards,
Ditton Cottage, Giggs Hill Road,
Thames Ditton 020 8398 4962

Highways, Drainage: Andrew Roberts,
1 Boyle Farm Road, Thames Ditton 020 8786 6882

Flooding Tony Thompson,
Willow End, River Bank, Thames Ditton 07736 677671



THE NEXT RESIDENTS' ASSOCIATION OPEN MEETINGS ARE

Tuesday 29 November, 8pm – Vera Fletcher Hall

Tuesday 14 Feb 8pm - Vera Fletcher Hall

ALL WHO LIVE OR WORK LOCALLY ARE WELCOME



EMBERCOURT ROAD • THAMES DITTON

SIX BEAUTIFULLY DESIGNED
3-BEDROOM HOMES

Contact selling agent for details

020 8398 9696

sales@aldouscraig.co.uk

Computer generated illustration indicative only

News from the Residents' Association to mid-November



Fabulous first Nature and Climate Festival



A marvellous weekend was had by many at our Nature and Climate Festival in September. Opening with the Big Green Quiz on the Friday and closing with Tom Mustill and the wonderful Whale Sound Bath, it was lovely to see so many people participating. See the article on page 17 for more details.

We also had some striking entries to our Photography Competition and the results can be found on page 23 and for further details visit our website www.residents-association.com

Fountain Flowers and Spring Bulbs

Welcome to new RA gardeners Anna Pearson and Barbara Lord.

Anna has joined Francine Brooks in planting the winter pansies and the summer geraniums in the fountain at the Boyle Farm roundabout, where Andrew James waters the flowers throughout the year.

In October Barbara joined John Lyon and Will Bland planting hundreds more spring bulbs all over Thames Ditton and Weston Green. For more than 30 years the Residents' Association has funded the planting of these bulbs and next Spring we will see the results not only of this Autumn's planting but those that are spreading naturally.



John Lyon (right) and Will Bland, planting RA bulbs to brighten our days

Christmas late night shopping evening

Thames Ditton High Street will be holding a Christmas Shopping evening on Friday December 2 til 8pm. There will be some special events, mulled wine and the Christmas Lights switch on. Come along and enjoy a jolly festive evening.

Christmas Lights fund raising quiz Friday 3 February 2023, 7.30 pm

To raise money for the Christmas Lights we will be holding a Quiz night on Friday 3 February. There will be tables of six to eight. If you don't have a table, come along and we will put one together.

Details and tickets available from chairman@residents-association.com

L A T E N I G H T

CHRISTMAS SHOPPING

THAMES DITTON HIGH STREET

FRIDAY 2ND DECEMBER
UNTIL 8PM

- * Most shops in the High Street will be open until 8pm
- * Special Christmas events/promotions for all the family
- * Christmas lights switch on
- * Mulled wine
- * Christmas foods
- * Children's activities
- * Events supporting local charities
- * Fundraising, in association with the Thames Ditton Foundation, towards a defibrillator in the High Street

WE HOPE YOU CAN JOIN US FOR
A FESTIVE EVENING AND SUPPORT
YOUR LOCAL SHOPS



love thames ditton
shoplocal



All Saints gets a new Vicar



Welcome to Richard and Ada Rugg

In late October, the parishioners of All Saints Weston Green celebrated the installation of their new Vicar, Revd Richard Rugg in a service led by the Bishop of Guildford, Rt Revd. Andrew Watson.

Richard joins from Holy Trinity Claygate where he has been Associate Vicar. He and his wife Ada and their two daughters were welcomed with a reception in a packed church hall and the congregation is now looking forward to a brand-new start at All Saints after the difficult months of the pandemic.

Marney's Pond

Elmbridge Countryside Team are keeping a watchful eye on Marney's pond but anticipate that the pond will not come close to being full until well after Christmas. However, it has started to fill up as a result of the latest rain and is beginning to look a bit more like the pond we know from before the heat wave.

Planning

We are disappointed to report that the High Court has refused permission for

the Statutory Planning Review at the former **Jolly Boatman site (2018/3810)** as requested by Elmbridge Borough Council (EBC). The development is now in the position to go ahead.

The second outline planning application for the **Café Rouge Site, Portsmouth Road (2022/2191)** has been withdrawn. We would prefer that the developers submit a proper, thought out, sensitive planning application rather than wasting council and residents time with outlandish outline planning applications.

The RA has written regarding the application for change of use from commercial to residential at **27 High Street, Thames Ditton (2022/1260)**. As an association we believe that a critical mass of shops and restaurants is essential to the viability of the High Street and the conversion of units to residential threatens that viability.



We hope to see Marney's Pond back to full health

Lot 96

Your local independent
drinks retailer

96 Thorkhill Road, Thames Ditton KT7 0UW - Tel: 0208 616 9572

We stock over **300**
different
WINES & SPARKLING

This advertisement features a chalkboard with the text 'We stock over 300 different WINES & SPARKLING'. To the left of the chalkboard are three bottles of wine, including one with a red label and another with a white label. To the right are two bottles of sparkling wine, one dark and one light green.

We stock over **200**
different
BEERS, ALES & CIDERS

This advertisement features a chalkboard with the text 'We stock over 200 different BEERS, ALES & CIDERS'. To the left of the chalkboard are a bottle of Pacific beer and a can of Camden Pale. To the right are a bottle of Doom Bar beer and a can of Heik Beer.

We stock over **150**
different
products in our
RANGE OF SPIRITS

This advertisement features a chalkboard with the text 'We stock over 150 different products in our RANGE OF SPIRITS'. To the left of the chalkboard are bottles of Amouzeur and Ardbeg. To the right are bottles of Hermaid Gin and another gin.

we also sell...
**SOFT DRINKS, MIXERS,
SNACKS, CRISPS,
SWEETS, ICE CREAM
ICE, CIGARETTES,
TOBACCO, CIGARS,
VAPES**
*Alcohol Free products
also available*

This advertisement features a chalkboard with the text 'we also sell... SOFT DRINKS, MIXERS, SNACKS, CRISPS, SWEETS, ICE CREAM ICE, CIGARETTES, TOBACCO, CIGARS, VAPES Alcohol Free products also available'. To the left of the chalkboard are a bottle of Coca-Cola and a can of Snickers. To the right are a bottle of Pellegriin and a bottle of Appes.

Bring this voucher into store to receive....

20% OFF Any single
bottle of wine*

*Only for use against the full price of a single bottle of still wine on presentation of this voucher. Excludes Champagne, sparkling, fortified & price marked wine. Cannot be used in conjunction with any other promotion or offer. Voucher value 0.0001p. Photocopies will not be accepted. Single use only. Expiry date 31/12/2022

Our Highway Trees

This Autumn your Residents' Association took up with Surrey County Council the maintenance of our trees on public land along the highway grass verges. Surrey County Council spend thousands of pounds planting new trees, many of which do not survive. Meanwhile existing mature trees such as the ones the Residents' Association sponsored in Aragon Avenue and Riversdale Road are not maintained, often die and are cut down, leaving an ugly three-foot stump that is not replaced.

It would be better if some of the money for new trees were diverted to the maintenance of the existing trees.

River Thames Scheme, next round of consultation

For more details visit www.riverthamescheme.org.uk/scheme

The poster lists in-person consultation event dates for November and December. It includes the location, church name, and time for each event.

Month	Date	Location	Time
NOVEMBER	08	STAINES The Middle Church, TW18 3HG	1.30pm - 19.00
	16	SUNBURY-ON-THAMES St Andrew's Church, TW16 5QJ	1.30pm - 19.00
	19	MOLESLEY The Holy Trinity Church, TW9 2AS	1.30pm - 18.00
	22	ESHAM The Easter Church, TW20 9HG	1.30pm - 19.00
	23	WALTON-ON-THAMES St John's Parish Church, KT12 3D	1.30pm - 19.00
25	WRAYSLEY Wraybury Village Hall, TW19 5HA	1.30pm - 19.00	
DECEMBER	26	KINGSTON-UPON-THAMES Richard Marsh Church, KT1 1HZ	1.00pm - 18.00
	29	TEDDINGTON Peter and Paul Church, TW11 8NF	1.00pm - 19.00
	03	SHEPPERTON St Andrew's Church, TW17 9AU	10.00 - 18.00
07	CHERTSEY St Peter's Church, KT16 8AF	1.30pm - 19.00	

NO NEED TO RSVP
All in-person events will be drop-in, so just come along!

Join our editorial team

If you would be interested in helping with Thames Ditton Today we would love

to hear from you. Please get in touch at editor@residents-association.com

Dates for your diary

Christmas Shopping Evening

Thames Ditton High Street
Friday 2 December till 8pm

Christmas Lights Fundraising Quiz

Vera Fletcher Hall
Friday February 3 February, 7.30 pm

Candlelit Christmas Choral Concert

All Saints Church, Weston Green
December 10 7-8pm

Voices of Cambridge Ensemble. Free Admission. Retiring collection for charity

Farmers' Market

Mercer Close Car Park
(opposite the Library),
fourth Saturday of the month

Weston Green Litter Pickers

Meet at Marneys pub on the first Saturday in the month at 10.30am

Thames Ditton Litter Pickers

Thames Ditton Tennis Club car park
third Saturday of the month at 10.45am

All Saints Weston Community Lunch

last Wednesday of every month. To book in, contact Alison Cruthers on **07957 347170** or alisoncruthers@yahoo.co.uk

Bereavement Café (open to all)

Third Tuesday of the month,
10.30am - 12 noon. St. Nicholas Church Hall. Call **020 8398 9641** for more information.

Residents' Association

www.residents-association.com

or follow us on Twitter @TDresidents



Update from your Residents' Associations'

Thames Ditton Ward



Karen Randolph
TDWGRA



Caroline James
TDWGRA



Alex Batchelor
TDWGRA

We are all involved in numerous local ward matters and will happily take up any matter that is brought to our attention by local residents. Within council some of our specific roles are as follows:

Alex - Audit & Standards Committee;
Overview & Scrutiny Committee

Gill - Cabinet Portfolio Holder for
Community Care; East Area Planning
Committee

James - Overview & Scrutiny Committee;
East Area Planning Committee

Caroline - East Area Planning Committee
(Chair); Planning Committee (Vice-chair)

Karen - Cabinet Portfolio Holder for
Planning & Environmental Health;
Planning Committee

Janet - Cabinet Portfolio Holder for
Leisure & Culture, Planning Committee;
Licensing Committee

CIL Awards 2022/23

Community Infrastructure Levy is charged on certain types of development and a proportion of the sums levied (15%) is made available annually to the community impacted by the development, for spending on local infrastructure projects.

This year the local spending board for The Dittons, Hinchley Wood and Weston Green (made up of all the local ward councillors) found itself in the unusual situation of having more money in the pot than we had applications for. This meant we were able to support all the projects that had applied, as follows:

St Paul's Catholic Primary School - £36,689 for an outdoor play area

Elmbridge Eagles Rugby Club - £56,200 for movable changing units and portable flood lights for their temporary ground

Esher Cricket Club - £3,500 for covers at their Imber Court Sports Club ground.

The 2023/24 round of applications will open in February 2023. More information about CIL and which projects are eligible is available from the EBC website or speak to one of us.

Cost of Living support and local 'Warm Hubs'

The increasing cost of living is having an impact on everyone and many people are seeking support and advice for problems they have not experienced before as mortgage and rent costs spiral, fuel bills

Councillors at Elmbridge Borough Council

Hinchley Wood and Weston Green Ward



Gill Coates
TDWGRA



Janet Turner
HWRA



James Crawshaw
HWRA

skyrocket and the cost of everyday items creeps up daily. Making ends meet is a challenge for everyone and no-one should be afraid of asking for support or left unsure where to seek help.

The Council has set up a Cost of Living Support Hub (www.elmbridge.gov.uk/cost-of-living-support) where advice can be found if you are struggling to pay bills, looking for information on the various schemes available to help, worried about the impacts on you and your family's health or unsure where to turn for further advice and assistance. It's a helpful place to start if you are looking for the first time.

We have also been collaborating with Surrey County Council on a Directory of Support which has been delivered to every household in Surrey. If you have not received a copy please contact one of us.

Other Elmbridge initiatives include working with the Lower Green Community Centre to act as a distribution centre for Stripey Stork charity (which collects donations of children's toys, clothes and essential items for young families with children in need) and Brite Box, which helps to address the growing issue of food insecurity.

All the borough's Centres for the Community are being established as 'Warm Hubs' in association with Surrey County Council. Even without the official designation, our centres are warm, sociable places to spend the day. For just £9 membership (until the end of April 2024), you can access all our centres, take part in activities like film clubs, exercise classes and day trips, enjoy a three-course lunch and book in for services like hairdressing and podiatry at favourable rates.

Local Plan Update

Officers have finished collating the responses to the Regulation 19 public consultation this summer. A total of 354 responses were received from individual residents, residents groups (including the TD&WGRA), landowners and developers, neighbouring LPAs including Surrey County Council, environmental groups, infrastructure providers and amenity groups.

As a result of this feedback several areas of work have been identified that need to be investigated before submission, but this need not delay the timetable and we expect to submit the plan to the Planning Inspectorate this winter.

Busy Time Ahead?

Plan Some Time For You

Weekly Classes

Pilates Yoga Stretch Meditation
Vera Fletcher Hall & Guide Hut Thames Ditton

Workshops

10th Dec De-Stress Workshop
14th Jan Beginners Pilates Workshop
14th Jan Introduction To Meditation

Courses

10th Jan Rehab Pilates
Online Mindfulness Course

Online

On-Demand Library &
Live Stream Sessions
Available Too



For More
Info



07971 194948
mindbodymaintenance.com

Update from Nick Darby, our Surrey County Councillor



Cost of living issues are very much to the fore. There are local initiatives such as the Warm Hub at the Community Centre, and I want to mention our Food Banks, increasingly used and ever more needed. Those who help out and contribute deserve enormous thanks.

Now to local road issues. Significant work to Grove Way in Weston Green was completed some months ago. I recently inspected it with several Highway Officers. Further work is needed to cover drainage issues.

I am investigating the reason for temporary cones in Station Road, the yellow lines here need early repainting, and the roadside needs regular cleaning to make the parking restrictions clear.

I reported previously that the Surrey County Council highway repair budget for each County Councillor was increased in May to £100,000 a year. For Thames Ditton, I agreed works to St Leonards Road, and the resurfacing (and hopefully lighting improvement) to the footpath from Watts Road (by the George & Dragon) to St Leonards Road, and a series of line repainting works. Frustratingly, so far, none of this work has been carried out. I continue to press Surrey Highways to schedule the work.

I have received reports of pavement parking causing issues around Thorkhill Road, all too often forcing people to walk in the road. This is especially dangerous for buggies and mobility scooters. I am investigating and hope to find a solution.



Surrey County Councillor, (The Dittons) Nick Darby

I am involved with a bus issue - here the public service which serves Esher High School from the Portsmouth Road. It is almost too popular at certain times of day. I am hopeful we can shortly find a solution, a number of those involved are working together.

In stopping here, I apologise if I give the impression roads are the only issue. The Surrey Budget for 2022/23 will soon be upon us. Inflation, staff retention, Adult Social Care, Looked-after Children, new IT, and Home to School Transport costs are among the issues, against a background of what the Council Tax increase will be.

As always, if I can help with any issue, please do get in touch.

Nick Darby,
Surrey County Councillor for the
Dittons 0208 398 2382

cards, gifts
chocolates



love thames ditton
sh♥plocal



design: www.theseupdesign.com thames ditton

view
thames ditton

34 High Street Thames Ditton KT7 0RY 020 8972 9706

@ViewGifts

www.view-gifts.com

FUNERAL DIRECTORS AND MEMORIAL STONEMASONS

**OUR FAMILY
HELPING
YOUR FAMILY**

For over 240 years, seven generations of the Lodge Family have been privileged to help local families in their time of need. We provide all funerals, whether modern, traditional, green or alternative, with care and compassion.

THAMES DITTON

37 High Street 020 8398 4586

Branches also in Esher, Molesey & Surbiton

www.lodgebrothers.co.uk



Robert, Chris, Andrew & Michael Lodge



"The staff at Lodge Brothers have been sympathetic, understanding and supportive. We will be forever grateful for their support"
- Mr Robinson

Lodge
BROTHERS 1780
the family you can turn to



ASK ABOUT OUR
PRE-PAYMENT
FUNERAL PLANS

FLORAL TRIBUTES • FUNERAL PLANS • WILLS & PROBATE

Nature and Climate Festival – a great success



The solar panel building team celebrating success!

Think of Glastonbury and you think of music. Hay on Wye? Books. Edinburgh? Comedy. Now, Thames Ditton & Weston Green can lay claim to Elmbridge's first 'Nature & Climate Festival'.

Over three days in September the Residents' Association and our partners laid on more than 30 events for local residents, to educate, entertain and change behaviours. Because we must do something. The planet is under threat from climate change and all the science points to the fact that we need to act now.

Our first event on Friday evening was an eye-opener. Local resident Lucy Siegle (journalist, author, campaigner and one of the festival organisers) hosted the 'Big Green Climate Quiz' at the George & Dragon pub. This turned out to be less a showcase of what we knew, than an exposé of how little most of us know about environmental issues. It was great fun, but we all went home more than a little chastened.

We kicked off on Saturday at Ye Olde Swan

pub where we welcomed Hugo Tagholm, CEO of marine campaigning group Surfers Against Sewage (SAS). Hugo talked us through the water quality of the Thames (not great, in case you were wondering) and what SAS is doing in the fight against the dumping of sewage in our waters and to reduce plastic waste in our oceans.



Hugo Tagholm speaking at Ye Olde Swan

Plastics were also on the agenda in the Vera Fletcher Hall where campaigner Daniel Webb told us some home truths about our reliance on single-use plastics and what we can do to reduce it.

Meanwhile, in the Thames Ditton Centre for the Community, one group of enthusiasts was busy building their own solar panel with Agamemnon Otero CBE, founder of Energy Garden, while others were watching how to make a bird box with Men in Sheds.

Such ‘hands on’ activities were a recurring motif of our festival. From the outset we said, “*No static stands; no leaflet takeaways*”. Instead we offered practical experiences and demos: creative writing to inspire; handicrafts to recycle waste materials; photography to encourage appreciation of our surroundings; a Repair Café (why throw something away when you can repair it in five-minutes?); upcycling and re-styling old clothes and a Tech-Takeback, where cast-off tech was taken away for repair and re-use.



Bella Gonshorivitz at the grow your own clothes workshop



Volunteers Emily (left) and Tannia at the Festival's Green Room cafe

There was something for everyone. Festival sponsors Russell-Cooke Solicitors spoke about making a difference in business and leaving money to environmental charities. Killik & Co. talked about sustainable investing and we covered composting, gardening for wildlife, bee keeping with Bee Inspired, a fascinating bat walk with the London Bat Group and a ‘Green Gym’ bootcamp.

There were some amazing musical performances. No-one could fail to be moved by We Are the Voice, the children’s environmental choir who entertained us on Saturday with their joyous repertoire. “*We sing for the climate, oceans, trees and the wonderful species with whom we share our planet*” they said, and - wow! - their message hit home.

On Sunday we enjoyed an affecting performance from Alice Boyd, composer in residence at the Eden Project. Her music is inspired by sounds she detects in plants using carefully placed electrodes. It was ethereal and inspirational.

In a packed weekend residents had a chance to hear from an amazing line up of speakers

including writer *Gaia Vince (Adventures in the Anthropocene; Nomad Century)*, *Safia Minney MBE (founder of People Tree and author of Slow Fashion)* and *New Scientist* podcast editor *Rowan Hooper (How to Spend a Trillion Dollars - the 10 Global Problems We Can Actually Fix.)*

The festival closed with an event described as ‘astonishing’ by many of those fortunate to be there. After talking us through the experience that led him to write ‘*How to Speak Whale*’, Tom Mustill invited us underwater to hear the sounds of the ocean in an immersive audio experience. We learned how man hunted whales to near extinction in our thirst for soap, cosmetics, oil and corsetry, until we discovered they

sang to each other. Now they are in danger again, as the oceans are changing due to climate change. Listening to the beautiful, haunting songs of these creatures who share our planet, it was hard not to agree: we have to change our ways.

It was a thought-provoking weekend and thanks to the Co-op it does not end there. They sponsored 500 packets of native wildflower seeds for sale as a fundraiser and surplus packets have been donated to Thames Ditton Junior School, St Nicholas Church, Esher College and local Guides and Brownies. Thanks to them and the people who bought seeds, next year we can look forward to 500m² of wildflowers growing in Thames Ditton and Weston Green.



It struck me at the wonderful Nature and Climate Festival how many people said they would be happy to volunteer at any future events – a fantastic offer which sums up our community.

Many people juggling home and work pressures may be put off from volunteering. They may feel they don’t have time, or they don’t know how to find out more about the volunteering opportunities in our community.

So, I thought I would highlight some of the areas we need your help with. The Thames Ditton and Weston Green Residents’ Association is entirely run by volunteers and its purpose is to preserve and enhance our community for the benefit of everyone.

There are some specific events we need help with, either volunteers or financial support. This could be a ‘one-off’ help to decorate Christmas trees on a Sunday morning or any budding writers who would like to help us with this magazine. Or you could get involved in a future Nature and Climate Festival, help with the Secret Gardens or even open your own garden? There are many opportunities to get involved. This is a wonderful community with so many people willing to help, so we would love to hear from you.

Caroline James
RA Councillor

If you would like to find out more about the volunteering opportunities available, please contact Graham Cooke at Chairman@residents-association.com

Alan Greenwood & Sons

Independent Family Funeral Directors



Latest Jaguar or Mercedes Hearses and Limousines
 Quality Service 24 hours a day
 Home visit arrangements
 Golden Charter Pre-paid funeral plans
 We will not be beaten on price



1 The High Street
Claygate
 KT10 0JG

57 Fleece Road,
Long Ditton
 KT6 5JR

13 Molesey Road
Hersham
 KT12 4RN

259 Ewell Road
Surbiton
 KT6 7AA

01372 377 377 020 8398 0012 01932 260 046 020 8399 4455

Visit Our Website for Full Details of Our Services and to View Our Obituaries
www.alangreenwoodfunerals.com

INDEPENDENT, TRUSTED FINANCIAL ADVICE IN THE HEART OF THAMES DITTON

Knight James' are a friendly, local business offering trusted, impartial financial advice.

Our experienced team are able to offer advice in the following areas:-

- Mortgage & Lending Services
- Investment & Pension Advice
- Portfolio Management
- Retirement & Tax Planning
- Corporate & Employee Benefits
- Commercial Insurance

Contact us today to find out how we can help to put you on the right financial path.



MORTGAGE SERVICES



COMMERCIAL INSURANCE



WEALTH MANAGEMENT



INVESTMENT & PENSION ADVICE



Call 020 8398 6677
www.knightjames.com

6 Station Road, Thames Ditton, Surrey KT7 0NR

knightjames
 Wealth Management

Introducing the Reverend Ruth Phillips



Only 30% of vicars in the Diocese of Guildford are female and Ruth is the first female curate to arrive at St Nicholas Church, Thames Ditton. Ordained in July 2022, let's find out about her journey so far.

Did St Nicholas choose you or did you choose him?

Well first there was God. Some years ago, I was sitting in my local church, which coincidentally is also St Nicolas (without the 'h'), in my home town of Bookham. I suddenly realised that I could hear God's voice loud and clear. I knew it was God because I had such a sense of conviction and challenge. I remember rolling my eyes and saying to myself, '*Oh my goodness, God is asking me to become a vicar!*' I had that sinking feeling that nothing would ever be the same again.

That sounds like quite a moment – were you from a religious family?

Not really. It was when I went to Canterbury University to study for a teaching degree that I had my first meaningful encounter with Jesus. I was attending a Christian Union meeting and I was too polite to leave. The speaker spoke about who Jesus was, his forgiveness, grace, death and resurrection, and what it meant. Everything fell into place and I became a Christian.

So did you ever become a teacher?

I taught for a while and then I returned to Bookham and took on an admin role for the church and worked with kids and families to make it into a full-time role. I tried to ignore the calling for a while. I



The Reverend Ruth Phillips

just didn't think my view of what female vicars were like fitted with who I was until I met some others who seemed more like me. The calling just got louder, and when I approached my minister about it, they immediately said that they were intending to talk to me about ordination.

How did you go about becoming ordained?

As you can imagine with the Church of England, it is a lengthy process. I took a long list of reasons why it was a bad idea to my first meeting, and we rationally went through all my objections. Then there is a Bishops Advisory Panel interview (the BAP) which is pretty intense. There is also a three-day residential course where your every interaction is watched and you do lots of tests and a presentation.

If you pass all of that, the Church of England pays for your tuition fees. I hadn't

done any formal theology before and I was under 32 years of age, so I did the 3-year residential BA in Theology, Ministry and Mission. It covers everything – including safeguarding and leadership for example.

What did you know about Thames Ditton before you came here?

I had never even heard of Thames Ditton – although I presumed it was located next to the River Thames! When I first arrived, I immediately saw the sign for Thames Ditton Gin – another sign from God to confirm that I was in the right place! When you are ready to start work, the Church of England sets you up, a bit like a blind date. I met with Reverend Andrew Cowie and we decided we would get on, and here I am!

What are your ideas and hopes for the future of our church community?

On my second visit I met members of the congregation in Ditto's lovely garden. This helped me to get to know about their church and what they like and don't like. It's been such a strange time with all the Zoom church meetings and how it has impacted on people's lives. The building has only been open for services for a month or so.

Working with others here, such as the congregation and the Parish Church Council (PCC), I think my role is to listen to their ideas and dreams and play my part in helping to discover what God is calling us to. I'm not alone in hoping that our community will grow and that more people will feel a sense of belonging to the church family.

People live such busy lives; what would you like to say to those of us who don't usually attend church services?

It may not feel important now but there will be a time in each of our lives when we will find that what we believe really matters. After the amount of change we've experienced in the last few years you may already have some questions stirring. Church is not somewhere where we pretend to have all the answers or to be better than anyone else (at least we shouldn't!) but a place where there is hope, not in ourselves, but in God, who is constant. You do not have to be convinced to come to a service. You would be welcome any time.

Julie Royce



Meet Reverend Ruth Phillips at St Nicholas Church

Photography Competition



The Residents' Association ran a photography competition in the lead-up to our Nature & Climate Festival and we were delighted when Ellie Goulding, the singer/songwriter and UN Global Environment and WWF Ambassador, agreed to judge the winning entries.

Category 1: Our local wildlife - the Animal World

Winner Kingfisher courting - Photographer: Paul Furner



“The detail in this shot is captivating. These are animals just going about their everyday life, but to us it is so exquisite and fascinating. You could look at this image for hours.”

Category 2: Our local wildlife – plant life

Winner: Lichen on a branch - Photographer: Henry Turner (age 12)



“A really pretty and intriguing picture of one of the ecosystem’s workhorses that is often overlooked. There are so many questions...Why does the lichen grow like that? What does it say about the environment and air quality? This picture is a gateway into learning more!”

Category 3: Our local surroundings

Winner: Going for a spin (autism style)

Photographer - Sarah Kalkini

"I love this image and the sense of freedom it captures. It gives me the chance to experience the location and the ground underfoot through someone else's eyes. I think it's a really lovely picture. Well done."

We will feature some more of the competition entries in future editions of Thames Ditton Today



International category

Winner : Tiger, Ranthambore, India.

Photographer: Will James

"Wow. This is an image that you remember for a long time. There's a vulnerability to the animal in the water that we wouldn't normally associate with a tiger. The textures and the detail are astonishing..."



Best photograph by someone under 16

Winner : Garden frog (Animal World category)

Photographer: Henry Turner (age 12)

'This image is full of character and shows loads of promise. Well done!'



People's Choice Award

Winner : Where's Mum?

Photographer: Jason Butler



A surprise entry

The organisers were surprised to receive an entry from West Bengal! Although outside the entry area for the competition this photograph from Raju Das sums up the climate challenge we are facing.

Floods 2022 (West Bengal) - Photographer: Raju Das



Highly commended
“Ssh, I’m Sleeping”
Photographer Jason Butler



**THE ADVENT OF
CHRISTMAS**
Candlelit Choral Concert
VOCE
Voices Of Cambridge Ensemble

VOCE comprises mainly ex-Cambridge
choral scholars and semi-professional singers

The Parish Church of All Saints,
Weston Green KT10 8JL
(the white church by the pond)

Saturday 10 December 2022
7-8pm

FREE ADMISSION
Retiring collection for charity



Brighten up your Garden!

Is your garden in need of a makeover?
From planting plans to a simple injection of colour
Green Room Garden Designs can help
020 8398 5703

Anna 07801 921166 – Kate 07956 641881
RHS and Merrist Wood Qualified

Peace

Hope

Protecting our Local Green Spaces and Thames landscape heritage



Your Residents' Association's response to Elmbridge Local Plan Regulation 19 Consultation



Ditton Field, River Thames and Hampton Court Palace

Last July Thames Ditton & Weston Green Residents' Association responded to Elmbridge Council's Local Plan Regulation 19 consultation. We considered the Plan to be broadly sound but proposed additions to ensure that our Local Green Spaces and our valued Thames landscape would continue to receive the protection that they presently enjoy under the current Local Plan. These, we believed, would make the Plan more consistent and sound, based on residents' local knowledge.

Today, and particularly since the pandemic lockdown, we recognise the important value of our Local Green Spaces - environment, nature, health, recreation, as lungs in our built-up areas - and the need to protect them and our River Thames landscape from the erosion of creeping development. In the past we have successfully defended our Local Green

Spaces and we seek to ensure that the new Elmbridge Local Plan will continue to do so.

River Thames Landscape

We feel that the proposed Council new Local Plan Environment Policies ENV1 and ENV5 do not sufficiently recognise the national importance of the River Thames corridor and its tributaries and the importance of the partnership with Thames Landscape Strategy, compared with the present CS12 policy. The Council should, as at present, adopt *'a co-ordinated partnership approach to the future of the waterways in order to:*

- *maintain and enhance the landscape and the waterscape*
- *conserve and enhance bio-diversity*
- *support opportunities to improve public access*

Local Green Spaces

We looked at four of the sites that were considered by the Council but not designated as Local Green Space. They all score highly on the Council's five criteria – Beauty, Historic significance, Recreational value, Tranquillity and Richness of wildlife and therefore should be included, for the following reasons, to protect them from development:

1. Esher College Sports Ground – we see no reason why the Esher College site should be treated differently to the Tiffins Sports Ground, which the Council has designated Local Green Space. They are both in close proximity to each other and both abut the Hampton Court Way. The Esher College site has historic significance being part of what was the old Weston Manor Farm dating back to the Domesday Book, and later owned by Henry VIII, Elizabeth I and William Speer, Lord of the Manor of Weston.

2. Ditton Marina - we disagree with the Council's low assessments given in terms of recreational value, tranquillity and wildlife - we believe that a higher assessment would be appropriate to this site on the bank of the River Thames which attracts wildlife such as many different species of waterbirds. Public access to the various facilities of the site is widely used.



River wildlife

The site on the bank of the Thames with views up and down the river and across to Home Park is one of the few places where the public have access to the Thames.

3. Ditton Field (Kingston Grammar Playing Field) and Field Save - We believe that these two sites on land between Summer Road and the River Thames should be protected by being considered together as they form one contiguous piece of land which provides the setting for Grade 1 listed Hampton Court Palace. The site also provides an important part of the protected strategic views from Hampton Court Palace to the Surrey Hills.

Strategic Views from Hampton Court Palace

We are concerned to note that the protected Strategic Views 2 and 3 (from Hampton Court Palace to the Surrey Hills and to Thames Ditton Marina and Surrey Water Works) are no longer in the Local Plan, based on the recommendation of outside consultants ARUP. We can see no reason why these important views should be downgraded and why the protection they currently have through the Local Plan should be removed.

Conclusion

We welcome Elmbridge Council consulting residents and asking them to suggest amendments to the Plan based on their local knowledge and their views as to what is important. We trust that our proposed amendments will be included in the new Local Plan, making it more robust in protecting our important Local Green Spaces and Thames Landscape heritage.

Ruth Lyon

Sustainable investing



Wind turbine manufacturers can be part of a sustainable investing portfolio

Killik and Co was delighted to be one of the sponsors of the Thames Ditton Nature and Climate festival and particularly to be able to present to people ways in which they can invest sustainably.

Killik & Co's philosophy is to provide clients with the savings and investment products that match their needs and wants. As a result, we have focused on different ways in which we can help our clients invest more responsibly.

We look at responsible investing across three approaches.

First, ethical investing, where we take our clients' desire to avoid investing in certain types of businesses into account in constructing investment portfolios for them. For instance, avoiding investing in companies connected to gambling or the arms industry.

Second, ESG investing, where we look at how businesses score across environmental, social and governance factors in deciding whether to invest in them. This is based not only on the desire to invest in companies that act responsibly towards all their stakeholders, but also because there is significant evidence that companies that score well on ESG factors outperform over the long term. For instance, a business that treats its staff better may attract and retain the best talent.

Third, impact investing, where we look to invest in businesses that aren't just not doing harm but instead are actively improving sustainability. It is under this approach that we have set up a defined product, The Killik Sustainable Equity Service, in order to offer our clients access to investments that meet our criteria for both sustainability and financial returns.

Finesse Drycleaning And Alteration

Fed up with doing your own laundry? Do not worry we got you covered.

Alteration services:

- Dresses
- Suits
- Bridal dress and Bridesmaids
- Curtains

Dry clean and laundry:

- Suits and dresses
- Curtains and rugs
- Fur, leather and suede
- Bedding and duvets
- Shoes

Ironing services:

- Shirts
- Suits
- Dresses
- Bedding

Experts in cleaning wedding dresses

CALL NOW TO ARRANGE YOUR FREE PICK-UP AND DELIVERY SERVICE ON

020 8398 6655

5 Criterion Buildings
Portsmouth Rd
Thames Ditton
KT7 0SS

Arora The House of Beauty

Arora - The House of Beauty is your go-to for all things beauty in Thames Ditton. This quaint, welcoming and cosy salon has all you need to refresh your look.

A specialist in Organic Hot Waxing and Threading, Facials, Advance skin treatments, Shellac Manicures so on.

Found in 136 Summer Road, Thames Dittion, KT7 0QR. The venue is within walking distance of Hampton Court and Thames Ditton train stations. Free easy parking front of the shop



07546 493706

f arorabeautyhouse

The Art Buyer



WINTER SHOW

16A High Street, Thames Ditton KT7 0RY
Gallery open Wednesday to Saturday

T: 0208 398 9333 E: info@theartbuyer.co.uk

www.theartbuyer.co.uk

In running this service, our philosophy is that change is needed to ensure sustainable economic progress. This is to ensure that we protect the environment whilst building a healthier and fairer society for more widespread economic growth. Achieving these goals will require investment in many new areas, driving sustained growth over an extended period. We believe that there is an opportunity to invest to make a positive impact on sustainability while also capturing the benefits of the growth opportunity.

The Killik Sustainable Equity Service is an actively managed portfolio of investments in businesses that we believe are making a positive impact on sustainability. It is not enough to just do no harm – our investments must be *‘doing good’*. For example, we don’t want to own a business that is just switching to using solar energy.

Instead, we want to own the company making the solar panels or building out the large-scale solar farms.

We measure sustainability against the UN’s Sustainable Development Goals. We then use this to identify areas of investment opportunity and risk. We see the best sustainability ideas among smaller companies, better able to drive innovation and take advantage of the growth opportunities.

We divide our investments across three main themes:

Environment – businesses that enable protection of the environment

Health – businesses that enable people to live longer, healthier lives, and

Empowerment – businesses that improve people’s quality of life and reduce inequality.

Some examples of the businesses we invest in: Trex, the leader in composite

decking made from recycled plastic and wood that would otherwise go to landfill; Vestas, a global leader in wind turbines; Tandem Diabetes Care, a leading supplier of diabetes pumps, and Prysmian, the global leader in high voltage cables used to connect renewables projects to the electricity grid.

If you are interested in investing sustainably or just need some advice on how better to plan for your financial future, then pop into the Killik & Co branch in Esher to have a chat with our team who will be happy to assist you.

Nicolas Ziegelasch, Partner and Head of Equity Research at Killik & Co.

Capital at risk

Thames Ditton Almshouses

Thames Ditton Almshouses are looking for someone to join the friendly trustee team as a temporary book keeper/treasurer.

The role should take around an hour a week and is needed for a six-month period to cover absence.

If you would like to find out more about how you can get involved in supporting this local charity, please contact carolinejames1@gmail.com

TJ Bathrooms



Based in Cobham, we complete work across Surrey. Fitting Bathrooms, Kitchens and more with over 25 years experience we are more than happy to help.

Contact us by phone 01932 866471 or email tjbathrooms@hotmail.com for more information.

121 Anyards Road, Cobham, KT11 2LJ

Flooding in Thames Ditton – some good news



Since the flooding in 2013/14 the Residents Association have been ‘fighting’ what seemed like an uphill battle to get agreement from the authorities, mainly the Environment Agency (EA), to take some steps to improve the flood resilience of the main ‘High Risk’ area of Thames Ditton.

The Residents’ Association has been in discussion with the EA for several years about the use of temporary barriers. Now we have been told that river modelling to inform the eventual design is being finalised. There will also be a review to ensure safety for both residents and Environment Agency staff involved in deployment. We could therefore participate in a public consultation in the first part of 2023. The temporary flood barrier could provide increased resilience to flooding for some 150 houses in the High Risk area, and could be available for deployment if needed from winter 2023/4 - which is excellent news!

The EA have asked me to share the following statement: *“We consider deploying our temporary flood barriers when it is technically and economically viable, where it is safe to do so, where resources allow, and where forecasts provide sufficient notice of flooding. It is not possible to guarantee that temporary barriers will always be deployed, either before or during a flood and to any particular location, as this depends on the circumstances at the time. Temporary barriers can be a useful tool to mitigate flood damage in some locations but cannot guarantee communities any level of flood protection.”*

Unfortunately, there are some 60 properties along the riverbank that will be on the ‘wet

side’ of the temporary barrier, as it must run along roads and paths - River Bank, Albany Reach etc. Not only will these properties be unprotected, but they could effectively be cut off when the barrier is in place as it will form a physical barrier that cannot be crossed. It is planned to provide temporary gaps during its deployment before the flood water is forecast to reach the barrier, but when the gaps are closed the ‘wet side’ properties may have to consider being evacuated.



Temporary barrier, Guildford, 2020

The EA say that 2014 represented a flooding event with a one in 10 to one in 15 chance of happening each year.

The river height reached 6.7m, a rise of 2.2m above the normal summer level. The EA defined High Risk area is equivalent to a 7.5m river height, 80 cm higher than the 2014 flood and each year there is a one in 30 chance of that being reached.

Last year we were lucky to obtain some funding from Elmbridge BC to undertake some surveys to measure river bank height. These were undertaken to identify the lowest points and see whether there might be a potential route that could be used for a permanent barrier through riverside gardens that would move all or most of the ‘wet side’

properties onto the dry side. Happily, there does seem to be such a route, as shown on the plan below.



Possible route for permanent flood barrier (in green)

This mainly uses existing walls and adds a flood wall on top with any strengthening that may be required. Obviously the 25 or so riverside properties provide residents with a good view of the river and access to their mooring. Any acceptable flood wall would need to be mainly glass with a suitable flood proof gate to allow river access. Boat clubs would need demountable flood barriers that could be put in place when a flood is expected.

This is very much an initial proposal that needs a lot of further work and funding. The second bit of good news is that the EA have bid for funding to commence an initial study. They are aiming to get everything in place to start the study next April. The consultant will look in detail at options including the one identified during the surveys. All being well, there should be a public consultation on initial options in Summer/Autumn next year.

A couple of Flood Group members visited a completed barrier scheme in Godalming with the EA and the local Chairman of their Flood Group. Godalming Flood Alleviation Scheme - GOV.UK (www.gov.uk) The scheme is rather different from something that would

be appropriate for Thames Ditton but it provided a very good indication of the activities and timescales. It was clear that local residents were actively involved during the design development, their concerns were taken into account and they are very happy with the outcome.

Based on their experience it seems the various stages that must be gone through from initial design to completion of implementation may take some five years. This means that, if all goes well in Thames Ditton, the riverbank residents on the 'wet side' of the temporary barrier, if deployed, will only have to be concerned for some five years before the permanent barrier will make the temporary one unnecessary.

Another point of interest. The 'High Risk' area of Thames Ditton shown on the EA web site is based upon the current situation and the design of the temporary barrier arrangement seeks to protect that area. A permanent barrier design would be designed to take into account climate change and hence the barrier may be higher and potentially provide protection for a wider area. Both schemes must include pumps or pumping stations because the street drains discharge into the Thames and hence during flooding, when the river height is above the road heights, the drains will cease to work.

For further information, please look at the Flooding section of the Residents Association website, www.residents-association.com which contains details of the surveys and a lot of background information relevant to Thames Ditton.

Tony Thompson,
Convener, Residents' Association Flood Group

Meet your distributors - Jean Hipwell



Your copy of Thames Ditton Today was put through your letterbox by one of our team of loyal volunteer distributors. Who are they and what are they up to when they are not delivering magazines?

Jean delivers to Church Walk.

How and when did you start living in Thames Ditton?

I moved here 12 years ago. I came from Elstree in Hertfordshire where I had lived with my husband for 41 years. I came to visit my daughter, who had moved to Thames Ditton, and as I travelled through Surbiton on the train, I was expecting *'The Good Life'*! I moved here about three years after I lost my husband to be closer to my family.

My home in Church Walk feels just right for me. I was walking past on my way to a family birthday celebration and saw it was for sale. I managed to quickly look round it, but birthdays and Christmas intervened so it was several months later that I made an offer. I have a secret patio garden and the furniture just fitted. It seemed as though it was meant to be.

A brief 'potted biography'?

It might not be obvious when you meet me, but I was born and grew up in Dublin. I have lived in the reigns of four monarchs!

After my school years I went to Trinity College, Dublin where I graduated in Organic Chemistry and met my husband, Billy.

I worked for Unilever at Port Sunlight



Jean in her patio garden with a Project Linus quilt

and later moved to Chelmsford where my husband worked for Marconi. His work was very exciting in the 1960s as he was involved in developing colour TV cameras.

We had three children. After having the children I worked part-time as a librarian in a school and the public library. One of my daughters now lives in the US, my son is in Scotland and I have two grandchildren.

What hobbies and activities do you enjoy?

My first love is gardening. As a child I can remember helping my father with his tomatoes. I belong to Esher and Molesey Garden Society which meets in St Nicholas Church Hall and has talks, visits and a



THAMES DESIGN & BUILD

Call us on 020 8398 9252

Email: info@thamesdesignandbuild.com
www.thamesdesignandbuild.com



ARE YOU CONSIDERING AN EXTENSION, LOFT CONVERSION, OUTBUILDING, OR ANY OTHER ALTERATION OR ADDITION TO YOUR PROPERTY?

Thames Design and Build provides architectural design and/or construction services to clients across Surrey, with over 80% of our projects being Elmbridge based.

We offer:

- A free consultation to discuss your ideas and advise you on the possibilities and permissions
- A fixed quote for all stages of architectural work
- A fixed quote for your build – we are equally happy to provide a build quote in respect of your existing designs

We have a large portfolio of clients within Elmbridge, so whatever your plans are, we should be able to show you a comparable completed project.

Please email us at info@thamesdesignandbuild.com or call us on **020 8398 9252**



"We were recommended to TDB for their architectural design service. We liked the clarity of the process and costs, and we were delighted when our plans were approved. We asked three firms to quote for the build, and while TDB didn't come out the cheapest we again felt that we knew exactly what was included and we thought that the price was fair. We expected some stresses during the building project, but the TDB team were great to work with, and ultimately everything was finished on time, and there were no surprise costs. Overall, we couldn't be more pleased". Mrs SM, Surbiton



Ditton Garages, Southville Road, Thames Ditton, KT7 0UL

trading hut for plants and garden supplies.

I am a member of the RHS and go across on the ferry from the Albany to Hampton Court Flower Show every year. I look forward to The Secret Gardens each year.

I am a member of Molesey and District Antiques Society. I'm no expert but it is an interesting evening out when I go to the talks at Esher College, which are usually connected to things of local interest. The monthly meeting of Thames Ditton Women's Institute is a pleasant afternoon for speakers and a chat.



Some of Jean's Christmas patchwork

My husband and I spent a year in America where my interest in patchwork was awakened and it is addictive! Quilting is big there, so now visits to see my daughter always include a trip to a shop to buy some more exciting fabrics. I was always good at Maths, so the geometry of patchwork suits me.

When I moved here, I asked at Creative Quilting, the shop in Bridge Road, about local groups. I was guided towards Project Linus, named after the character in the Charlie Brown cartoons who always carries his 'comfort blanket'. We make small quilts

to give to children who are very sick in hospital in the hope that it gives them some comfort. I also make lots of other items including Christmas place mats and tree 'skirts'. I do both machine and hand piecing.

Is there one thing that perhaps people don't know about you?

I like a half of Guinness. My father worked for them for 43 years and in Dublin, when you gave blood, you got a half pint afterwards. It's good for you!

Pat Cooke

Quick Fire Questions

Wine or beer?

See above!

Eat In or Eat Out?

I especially like the Chinese restaurant, Han Fu.

Holiday Home or Away?

I have travelled to many places and had family in France.

Favourite country?

I love Italy - where the tomatoes taste of sunshine.

TV or film

I didn't have a TV for a week recently and realised how much I missed it.

Favourite music?

I enjoy going to Evensong at church and singing the traditional old hymns.

What are your plans for Christmas?

Here with my family of course.

Volunteer opportunities for 2023



Thames Ditton Homes Limited



We are seeking volunteer 'Trustees' to join a team providing sheltered housing in Thames Ditton.

You would share responsibility for our not-for-profit sheltered housing company as well as providing support / guidance to the resident manager. We are currently looking for additional expertise in IT, administration, and premises management / building.

The time commitment is not onerous. You would be involved in 4 - 6 evening committee meetings a year and any action arising from them. The work is varied, interesting and worthwhile. We are a friendly committee and would welcome your experience and input. We would love to hear from you and would be more than happy to discuss the role and the organisation in more detail. Please contact the Chair, Libby MacIntyre at mayburybus@mail.com for further information.



WALSINGHAM CARE
HELPING THE OLDER GENERATION

Walsingham Care is a long-established local grant-giving charity assisting the elderly and those who help to support the elderly in the Elmbridge area.

We are seeking additional Trustees to join our existing team and we are particularly looking for those with either Accountancy and Investment training (for an advisory role only) or prior experience in working with the elderly, such as in a social work role. The time commitment is not onerous, we meet quarterly for approximately two hours and there is the odd e-mail communication.

We would love to hear from you and would be more than happy to discuss the role and our charity in more detail. Please contact our manager, Debbie Beach, by e-mail for further information, Debbie@walsinghamcare.org.uk

CHEER Trustees Needed

CHEER is a local charity that provides a befriending service, hosts events and helps with benefits advice and signposting to other services for over-65s in the borough.

CHEER is currently looking for several new volunteer Trustees willing to help shape the strategic direction of the charity and its activities. They are particularly interested in people who have experience of one or more of the following:

Older people and social care, fundraising, marketing, finance and accounting, HR, legal, business management and planning

There are just a handful of meetings each year and they would love to hear from enthusiastic and committed people who are prepared to get involved and take a hands-on role.

If this sounds like you, please call Julian Rye on **07774 137149**, or email to jerye@uwclub.net



Stuart James Antiques

We are part of the largest recycling network in the world!

We sell 18th to mid 20th century furniture, mirrors and decorative items, together with modern lighting and handcrafted candles in a myriad of colours.



design: www.theantiquedesign.com thames ditton

Open 7 days a week from 11.30am to 5pm

77 Bridge Road, East Molesey, KT8 9HH
Instagram  @StuartJamesAntiques
07808 739857

Discover Home of Compassion



Home of Compassion Care Home is a Grade II listed mansion in the village of Thames Ditton, Surrey.

Providing residential, nursing and dementia care on a permanent and short stay basis.

Quality care and residents' wellbeing are at the core of Home of Compassion. An outstanding place of beauty that offers residential, nursing and specialist dementia care for elderly residents within a restored and extended 18th Century Grade II listed mansion. Our luxurious living environment is home for up to 78 residents in a unique setting of approximately 2.5 acres on the bank of the River Thames in Surrey, overlooking the grounds of Hampton Court.

Care and Compassion

We are dedicated to providing dignified and respectful residential, nursing and dementia care. What matters



Explore the magnificent first floor library with comfy armchairs and a quiet space to read.



**I would
recommend the
Home of Compassion
for anyone needing
respite care.**

Respite resident

most to us is the wellbeing of each of our residents, whatever their circumstances, whatever their needs. We are not here to take over lives, we are here to help live them, and we are always on hand with discreet assistance when required.

Comfort and Wellbeing of Residents

The main house boasts grand reception rooms including the magnificent first floor library and ground floor cinema room, private dining room, lounge and hair salon. There is a dedicated activities room with an extensive programme of events for residents' health and wellbeing, with chair aerobics and gardening club being particular favourites.

Customer service is crucial to the success of resident comfort and wellbeing. The Hotel Services Manager and team provide a 24-hour service and our menus use seasonal and local produce – some of which is



Host a dinner party or have afternoon tea with friends and family in the private dining room.

grown in our very own vegetable garden - forming the basis of the extensive restaurant-grade menus. Room service is also available, with a selection of lighter meals and snacks. A concierge service attends to a host of other requirements from ordering flowers and arranging dry cleaning to booking theatre tickets.

Choice and independence

When it comes to individual bedrooms, we help our residents to put their unique stamp on their room and keep things just how they like them. All bedrooms are ensuite and have delightful furniture and furnishings. Our home is surrounded by beautiful landscaped gardens with several rooms having access to the gardens directly from their room.

Our bistro is perfect for socialising with family and friends and has a kitchen areas for making drinks. If you prefer to have some alone time, you can explore quiet nooks with comfy armchairs, classic novels and books on the shelves. To keep the mind sharp you'll find board games, cards and puzzles too - there's plenty to keep our residents engaged if they choose.

Proud to be 'Good'

Caring Homes and the Team at Home of Compassion are delighted that, The Care Quality Commission (CQC), have awarded the home with the rating of 'Good' in all five key inspection areas for being safe, effective, responsive and well-led.

Offering permanent and short stays. Contact us to find out more or to book a show round, call freephone 0808 223 5401 or visit caringhomes.org



You'll be in good company at Home of Compassion.



You'll receive a very warm welcome in our stunning reception area.

Book a short stay this festive season at Home of Compassion



Scan to find out more

Freephone

0808 223 5401

Online

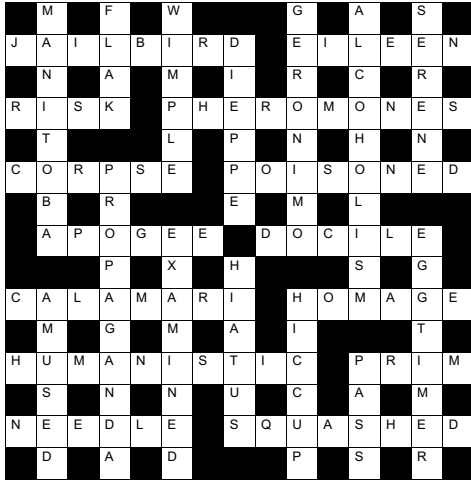
caringhomes.org

58 High Street, Thames Ditton, Surrey KT7 0TT

Home of Compassion

CARING HOMES

Solution to the Autumn Crossword



Congratulations to the senders of the first three correct entries opened in the shuffle.

Each wins a £5 voucher to spend in local shops.

Mary Bowen
90 Summer Road
KT7 0QP

Jason Nourse
44 Speer Road
KT7 0PW

Victoria Jerram
3 Boyle Farm Road
KT7 0TS

Christmas at
SECRET GARDEN
THAMES DITTON

Wreaths
Fresh Flowers
Gifts
Home Decor

020 8398 5505 | 38 High Street
www.secretgardenfloraldesigns.com

Craft my Day ✂

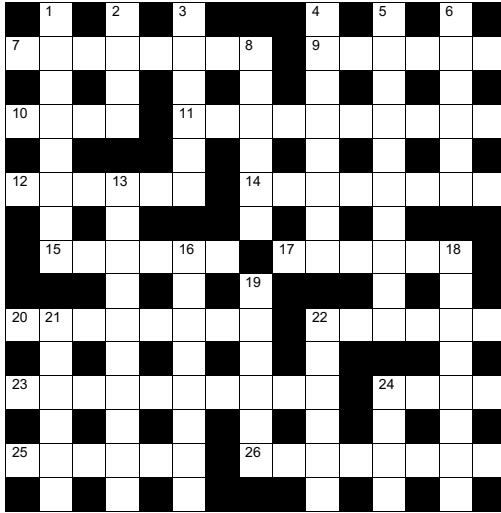
CHRISTMAS CRAFTS

Fun and Relaxing Craft Workshops
Sewing, Needlefelting
Jewellery, Sculpture, Mosaics
And More!

Craft My Day
29 High Street
Thames Ditton
KT7 0SD

www.craftmyday.com

Winter Crossword



by **Howard and Bob Cruthers**

The first three correct entries randomly opened after the closing date of February 5 2023, will win a £5 voucher to spend in local shops.

Please send the completed puzzle (or photocopy) enclosing your name and address, with the envelope clearly marked 'Crossword Competition' to:

Thames Ditton Today
Crossword Competition
24 High Street
Thames Ditton
KT7 0RY

ACROSS CLUES

- 7 Hard protective covering (8)
- 9 Small dog's favourite chocolate bar? (abbrev) (6)
- 10 “ _ poor Yorick” (4)
- 11 Sense of isolation – less online (anag) (10)
- 12 Twisted, eg sense of humour (6)
- 14 Hosted (8)
- 15 Sexual demons (6)
- 17 Open up (6)
- 20 Croatian spotty-dog region? (8)
- 22 A chocolate bar: far, far away? (6)
- 23 Illogical quality; derived from The Trial's author (10)
- 24 Heart (4)
- 25 Overbearing confidence (6)
- 26 Failing to do, or include (8)

DOWN CLUES

- 1 Sardinia's capital (8)
- 2 Elope (4)
- 3 Released, from custody? (6)
- 4 Perennial flowering plant, named after its round tuber (8)
- 5 Person with a gender identity the opposite to that identified at birth (10)
- 6 Connected web (of lies?) (6)
- 8 Ineffective person (6)
- 13 Speed setters, for hearts? (10)
- 16 Belief in two gods (8)
- 18 It gets things moving: a live tax (anag) (8)
- 19 Shakespearean ghost (6)
- 21 Counter (6)
- 22 Celtic language (6)
- 24 Nosegay (4)

SERVICES, CLUBS, SOCIETIES AND GROUPS

SERVICES

Cheer (Concern and Help for East Elmbridge Retired)	Manager	01372 879321
Dittons & Weston Green NeighbourCare	Frankie Bell	07790 472993
Elmbridge Borough Council Community Support Services		
Thames Ditton Centre for the community	Mon & Thurs	0208 3985921
Thames Ditton Dementia Centre	Nikki Harding	01372 474526
Meals on Wheels, Community Transport, Dial-a-Ride, Alarm & Telecare services, Relief Carers	ask for service at central switchboard	01372 474552
Homesupport Elmbridge	Thomasina Breslin	01932 267128
Esher and District Stroke Club	Ann Pollock	0208398 6132
Voluntary Action Elmbridge	Sally Dubery	01372 463587
Surrey Youth and Adult Education Service	Elmbridge Area	020 8979 8334

GROUPS

1st Thames Ditton Brownies	Bronach Hughes	bronachhughes@hotmail.com
3rd Thames Ditton Brownies	Emily Wattret	3rdthamesdittonbrownies@gmail.com
1st Weston Green (All Saints) Scout Group	Carole Needham	gsl@westongreenscouts.org.uk
1st Weston Green Guides	Sumathi Jeevaratnam	sumathi.jeevaratnam@gmail.com
2nd Weston Green Guides		2wgguides@gmail.com
2nd Thames Ditton Guides	Bronach Hughes	bronachhughes@hotmail.com
1st Weston Green Brownies (All Saints)		1wgbrownies@gmail.com
3rd Weston Green Brownies		3wgbrownies@gmail.com
1st Weston Green Rainbows	Lizzie Owen	westongreenrainbows@gmail.com
4th Thames Ditton Ajax Sea Scouts	Alison Derrick	020 8398 0041
Dittons Scout Group	Stuart Jack	07971 479740
Emberbrook Trefoil Guild	Mary Bowen	020 8398 6857
Friends of Bushey and Home Parks	Jean Smith	020 8977 9391
Girlguiding in Thames Ditton and Weston Green		dittonsdistrict.hjh@gmail.com
Molesey and Dittons Neighbourhood Watch	Chairman: John Haberfield	020 8398 5256
Parents and Toddlers(St Nicholas church)	Information	020 8398 7211
Ripieno Choir	Nick Harris	020 8399 7231
Surrey Bell-ringers	Giles Andre	020 8979 1994
Bereavement Café	St Nicholas Church Hall	020 8398 9641

CLUBS

Albany Motor Yacht Club	Secretary	01784466651
All Saints Weston Lunch Club	Alison Cruthers	07957 347170
Arts and Heritage Club	Carol Butcher	01932 867511
Cercle Francais d'Esher	Brigitte Tiller	01932 860842 brigitte@ptiller.com
Claygate Bridge Club	Hon. Secretary	020 8398 1710
Colets Health & Fitness	Giordano Orsini	020 8398 7108
Ditton Bridge Club	John Dagnall	02083984463
Dittons Skiff and Punting Club	Hon Secretary	07710 139417
Dittons & Hinchley Wood Royal British Legion	Hon Secretary	020 8398 6263
Ember Players (Drama) Ember Sports Club	Elaine Sesemann	07801 943392
Ember Sports Club	Zenda Hedges	07717 304146

Ember Sports Club: Bowls	Sylvia Jones	01932 788701
Ember Sports Club: Croquet	Dr. David Cooke	01932 862841
Ember Sports Club: Tennis	Annabel Duncan	0208 786 6318
Esher Bowling Club	Roger Cooper	01372 468109
Esher Bridge Centre	Paul Whicker	01372 460157
Esher 41 and Ex-Round Tablers' Club	Dr. R. Tudor-Williams	020 8398 0108
Long Ditton Cricket Club	Nigel Hardy	020 8398 8361
Long Ditton Garden Club	Heather Harvey	020 8398 2642
Model Railway Society (Hampton Court)	Secretary	01932 241224
Old Cranleighan Rugby Club	Piers Cushing	07790 003731
Old Cranleighan Hockey Club	Simon Marshall (Men)	07801 737695
	Helen Hawes (Ladies)	07771 557900
Probus club, Hinchley Wood & the Dittons	Edmund Woolley	020 8398 3581
Probus Club, Sandown	Julian Rye	01932 976994
Probus Club of Molesey	Roger Marlow	0208 398 5460
Probus Club of Claremont	George Cameron	020 8224 1392
River Club (BMYC)	David Walker	0870 460 3586
Surbiton Croquet Club	Alec Thomas	020 8398 2391
Surbiton Golf Club	Secretary	0208 398 3101
Surbiton Hockey Club	Secretary	020 8398 2401
Thames Ditton Lawn Tennis Club	Rich Simkins	rpsimkins@gmail.com
Thames Ditton & Esher Golf Club	Mark Rodbard	020 8398 1551
Thames Ditton Squash Club (Colets)	Dave Peck	020 8398 7108
Thames Ditton Cricket Club	Geoff Dryden	07813 805 645
		Geoff.Dryden@hotmail.com

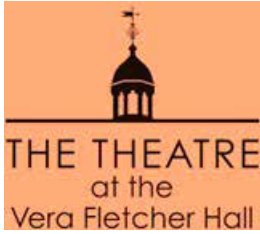
SOCIETIES AND ASSOCIATIONS

Civil Service Pensioners' Alliance	Mrs Brenda Denby	0208 398 6054
Ember Choral	Linda Bridges	020 8399 5402
Esher and Molesey Garden Society	Jean Billett	01372 465961
Esher and District Amnesty International	Cherry Eddy (Campaigns)	0208 398 4377
Hampton Court Way Allotment Association	Lettings: Piotr Hennig	020 8398 5358
Long Ditton Youth Club	Toni Izard	07749 633973
Lynwood Allotment Society	Gill Vickers	020 8398 4870
Molesey and District Antiques Society	Linda Lambert	020 8398 1476
NADFAS (Decorative & Fine Arts) Kingston	Mrs. Valerie Windsor	020 8549 9967
Oxshott & Cobham Music Society	Cherry Eddy (Membership)	0208 398 4377
		cherryeddy102@gmail.com
Soroptimist Women	Jean Smith	07770 417814
Thames Ditton Women's Institute (W.I.)	Secretary	020 8398 8615

OTHER

Vera Fletcher Hall	Lettings: Amelia Crafts	08456 528 529
	Membership: Sue Morris	020 8224 0980
Weston Green Conservation Area Advisory Committee		wgcaac@outlook.com

Please contact the Editor to amend these listings



THE THEATRE IN THAMES DITTON IS BACK!

Join our free mailing list at theatre@verafletcherhall.co.uk to receive:

- what's on
- special offers
- opportunities to help shape our future programming

After the pandemic pause in our activities we are planning a big comeback in Spring 2023.

Already in our lineup is an evening with The Cobham Band, a jazz night (Friday March 3), our film night using our high-tech quality projection, and entertainment from the Isosceles Theatre Company (Friday March 24).



*Elaine Hallam
presents Jazzish*

We are also excited to announce that We are the Voice, the children's environment choir, will be launching their **new show** "I Am The Earth" on Earth Day, April 22, 2023.



We are the Voice, April 22, 2023

By being a member of our audience or becoming a volunteer you can help us to make sure the show goes on!

We are an intimate theatre with great acoustics at the atmospheric Vera Fletcher Hall in Ember Road, Thames Ditton. It is run by friendly volunteers - and we are local.

If you are interested in joining our team, there are all sorts of ways you can get involved - for details visit our website www.verafletcherhall.co.uk/about-us - and click on 'volunteering'.



The Cobham Band, Friday March 3 2022

Liberating Dental and Aesthetic Treatments at Weston Cottage

IMPROVE YOUR SMILE
Teeth Whitening and Invisalign

PROTECT YOUR SMILE
Routine Check-Up and Hygiene Treatments

REPAIR YOUR SMILE
Implants, Root Canals, Fillings and more

FACIAL REJUVENATION
Non-Surgical Skin and Beauty Treatments

Weston Cottage
DENTAL PRACTICE



Weston Cottage Dental Practice
Lower Deck,
Admiral's Quarters,
Portsmouth Road,
KT7 0XA
020 8398 2204



Antique Clock Restoration & Repair

Specialising in Grandfather, Dial, Bracket and Carriage Clocks

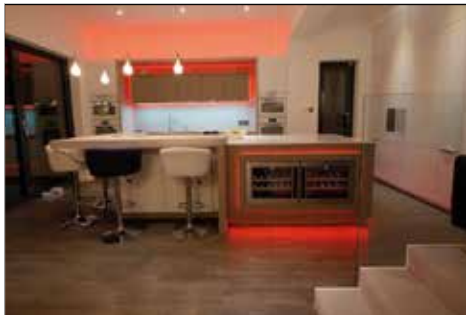
Contact: Mark Rowe M.B.H.I
BADA Diploma. Member of the Watch & Clockmakers Guild. West Dean Diploma.



Tel: 020 8605 0331

www.theclockgallery.co.uk

Additional Restoration services available for Watches, Books, Ceramics and Fine Furniture. Antique Clocks also bought and sold.



MOORE
By Design

PROFESSIONAL KITCHEN DESIGN

The Hersham Centre, Hersham T: 01932 379076

New online gallery with 150 images...

www.moorebydesign.co.uk

Karen's Angels

The All Needs Carers



Karen's Angels is a friendly local care company, operating in Surrey.

We provide professional 24 hour care, social and personal care services.

We are very proud of the excellent reputation we continue to achieve with our customers, their families, local authorities, GP's and DN's.

For further information please contact

Karen

02082247848

07760220604



Exceptional home care visits from exceptional carers

Most people in need of care would prefer to stay in their own home. Our home care visiting service is carefully tailored to suit your loved one's needs, can help them retain their independence and stay connected to friends, relatives and pets.

Our caregivers are carefully selected. We find excellent people with the right mix of skills, experience and a true caring nature, so that they can provide consistently superior home care.

- Companion & Social Care
- Personal Care
- Dementia & Alzheimer's Care
- Post-Hospital Stay Care
- Palliative
- End of Life Care



Find out more about how a **Visiting Angel** can help
Call 0203 143 4007 or 07923 157 010

www.visiting-angels.co.uk/northsurrey
northsurrey@visiting-angels.co.uk

Visiting Angels 
QUALITY AT HOME CARE