

THAMES DITTON TODAY

THAMES DITTON • WESTON GREEN • EAST MOLESEY

Christmas Fair Sunday 4th December

Programme inside



THE MAGAZINE OF THE
THAMES DITTON & WESTON GREEN RESIDENTS' ASSOCIATION

W I N T E R 2 0 1 6

TJBathrooms

**FOR EVERYTHING IN
LUXURY BATHROOMS
& SHOWERS**



Open: Mon to Fri 8am-5pm Sat 9.30am-3pm

121 ANYARDS ROAD, COBHAM, SURREY, KT11 2LJ (Car park to rear of building)

Tel: 01932 866471 / 868523

tjbathrooms@ntlbusiness.com • www.tjbathrooms.co.uk

FREE DESIGN & PLANNING SERVICE

Also at: 122 SUMMER ROAD THAMES DITTON, SURREY KT7 0QP 020 8398 4324





THAMES DITTON TODAY

Published quarterly since 1970

Editorial Team

Libby MacIntyre & Sandra Dennis
editor@residents-association.com

Magazine Design

Guy Holman
24 Angel Road
Thames Ditton
020 8398 8727

Distribution

David Youd
6 Riversdale Road,
Thames Ditton KT7 0QL
020 8398 3216

Advertisement Manager

Verity Park
20 Portsmouth Avenue
Thames Ditton KT7 0RT
020 8398 5926

Contributors

You are welcome to submit articles or images. Please contact the Editorial Team well in advance of the next deadline February 8

Advertisers

Thames Ditton Today is delivered to an influential 5000 households throughout Thames Ditton, Weston Green and East Molesey. Contact Verity Park for rates for full page, half and quarter page advertising.

In this Issue:

News from the Residents' Association	7
READY for precious metals.....	15
A jewel in the Thames Ditton Crown	17
A welcome addition to the High Street	19
Christmas Fair programme (pull out guide).....	23
In the bleak midwinter, services to bring you joy	27
Surbiton from Alton.....	31
George Jarvis and his charity	35
Autumn crossword solution	42
Winter crossword	43
Services, Clubs, Societies and Groups	44
The Theatre in Thames Ditton	46
Cover illustration: <i>Thesetupdesign.com, Thames Ditton High Street</i>	

www.residents-association.com

Officers and staff of the Association are volunteers, but we must fund costs of this magazine, administrative and election expenses, and other expenses such as spring bulb-planting and village Christmas trees. The subscription is only £3 per household. If you can contribute more, please do so. Subscriptions can be paid via our website www.residents-association.com; subscriptions (in an envelope please) may be left at Boots Pharmacy, 14 High Street, Thames Ditton or Thorkhill Road Pharmacy, 94 Thorkhill Road, Thames Ditton. Or mail to Membership Secretary Peter Haynes at 6 Onslow Gardens, Thames Ditton KT7 0JJ. Thank you.

Thinking of Selling or Letting your property?

Then why not speak to the local experts,
our credentials speak for themselves:

- 125 years experience in estate agency
- No.1 on Rightmove
- The biggest market share of sold property on Zoopla
- Six closely linked local offices
- A long standing reputation for honesty and transparency demanding exceptional standards from our highly experienced, knowledgeable staff
- In-house Financial advisor

One of our friendly team is always here to advise you



Nicola Ashworth
Branch Manager



Anna Jones
Sales Negotiator



Karen Martin
Sales Negotiator



Becca Stoner
Lettings Negotiator



Alison Brown
Sales Administrator



Raj Jandu
Financial Consultant



Thames Ditton Residential Sales & Lettings **020 8398 2500**

www.hawesandco.co.uk

Offices also at: SURBITON, NEW MALDEN, RAYNES PARK, WIMBLEDON BROADWAY & WIMBLEDON VILLAGE



RESIDENTS' ASSOCIATION

About the Association

Founded in 1934 our Association is a strong, locally based non-party-political organisation concerned with protecting the amenities and furthering the interests of residents. We work to preserve and enhance the best in our attractive environment and the quality of life of everyone in our community. Through regular meetings, social activities, our magazine and website we keep in touch with residents' views and we raise and spend funds for the benefit of the community, from tree and bulb planting to contesting unacceptable development projects. With six Residents' Councillors covering the two electoral wards we have a strong voice on Elmbridge Council working with other Residents' Councillors to ensure that decisions are based on the needs of local communities and on good management rather than on party politics.

Our Residents' County Councillors Peter Hickman (TD + WG) and Stuart Selleck (East Molesey) represent our views at Surrey County Council.

President: Martin Wilberforce
7 River Avenue, Thames Ditton
020 8398 4732

Surrey County Councillors
Peter Hickman, 3 Elmbridge Lodge
Weston Green Road, Thames Ditton
020 8339 0931

Stuart Selleck, 2 St. Johns Road
East Molesey
020 8979 2466

Thames Ditton Councillors

Tricia W. Bland,
29 Station Road, Thames Ditton 020 8339 0485
Ruth Lyon,
11 Riversdale Road, Thames Ditton 020 8398 3396
Karen Randolph,
Deepfield, Gigg's Hill Road,
Thames Ditton 020 8398 5005

Hinchley Wood & Weston Green Councillors

Tannia Shipley, 'Clinton House'
27 Lower Green Road, Esher 020 8398 2484
Janet Turner, 2 Montgomery Ave,
Hinchley Wood 020 8398 1565
Nigel Haig-Brown
53 Heathside, Esher 020 8398 4060

Officers

Chairman: Rhodri Richards,
Ditton Cottage, Gigg's Hill Road,
Thames Ditton 020 8224 5181
Vice-Chairman: Libby MacIntyre,
24 High Street, Thames Ditton 020 8398 5534
Hon. Treasurer: Christa Silverthorne
62 Thorkhill Road, Thames Ditton 020 8398 7101
Hon. Secretary: Florian Traub,
Longmead Road, Thames Ditton 020 8224 2880
Membership Secretary: Peter Haynes
6 Onslow Gardens, Thames Ditton 020 8398 6019

Conveners of Sub-Committees

Health and Community:
Karen Randolph (see above)
Planning: Graham Cooke
23 Ashley Road, Thames Ditton 020 8398 8509
Highways, Drainage:
Andrew Roberts, 1 Boyle Farm Road,
Thames Ditton 020 8786 6882



The Next Residents' Association Open Meetings are
Tuesday 31 January 2017 8pm, Tuesday 21 March 2017 8pm (AGM)
– Vera Fletcher Hall, Thames Ditton
All who live or work locally are welcome



FEEL FITTER HEALTHIER HAPPIER WITH COLETS!

With our recent huge investment project now complete there's never been a better time to join!

- Spacious gym with over 70 workout stations
- Over 100 studio classes each week
- 25m pool
- Sauna, steam & spa
- 6 squash courts
- Luxury treatment rooms
- Packed junior programme
- Café & bar
- Crèche & nursery
- Free member parking

PLUS...NEW FUNCTIONAL TRAINING STUDIO OPENING AUTUMN 2016

JOIN NOW & GET YOUR FIRST MONTH FREE*



*Terms and conditions apply. Available to new Peak and Daytime members only. Offer ends 30.11.2016.

Call now, or come in for a chat.
020 8398 7108

St Nicholas Road • Thames Ditton • KT7 0PW


COLETS
HEALTH & FITNESS
www.coletshealthclub.co.uk

News from the Residents' Association to mid-November



EBC Councillors, Tricia Bland, Karen Randolph and Tannia Shipley and SCC Councillor Peter Hickman with residents ready to board the 'petition bus'

Welcome to the Winter Edition

Some new East Molesey readers were pleased but surprised to receive copies of Thames Ditton Today. This is because they are now part of the electoral ward of Thames Ditton as a result of boundary changes implemented by the previous Conservative administration of Elmbridge Borough Council (EBC). We aim to keep you informed on local news and items of interest within the ward.

Rallying residents to save our buses

More than 2,000 Thames Ditton and Weston Green residents have signed a petition protesting against proposed cuts to the 514, 515 and 458 bus services by the current operator, Abellio Surrey, which could mean that Thames Ditton and Weston Green have no bus services after January 1 2017.

The RA made sure that Surrey County Council would be left in no doubt about the depth of feeling as the petition was delivered on board an iconic routemaster bus.

"Surrey County Council has said it is looking at engaging alternative bus companies to provide replacement services, but there is no guarantee that equivalent services can be found," said Cllr Tricia W. Bland. *"The impact of withdrawing these services would be devastating to the whole community. Many of our elderly residents and those with disabilities have no alternative forms of transport and rely on our local buses to maintain their independence. There are also those who rely on the buses to take them to work, schools and colleges, doctor's surgeries and hospitals."*

Residents' Association Chairman Rhodri Richards added: *"Any plan to cut the bus*

services would contradict SCC's pledge to foster a more environmentally friendly county. Ever more planning applications without off-street parking are being granted, with the reasoning that we should be encouraging people to forego their cars and use public transport. This means SCC should be investing in and improving bus services, not reducing them."

The Residents' Association is asking SCC for reassurances that the three bus services currently under threat will be continued, without a reduction in frequency or stops, under a new operator.

Parking

The proposals from the 2016 Dittons and Moleseys parking review by Surrey County Council (SCC) have been approved by the Elmbridge Local Committee and will go for public consultation shortly.

There is a link to the proposed changes on our website residents-association.com and you can also find details on Surrey.gov.uk. SCC is currently preparing the documents for advertisement, at which point it will accept public comments or objections.

This is all due to take place towards the end of this year or early in 2017. We will publish the start date on our website when we have it.

There are 24 separate proposals including

- St Leonard's Road, **Thames Ditton** from the Fountain roundabout to Portsmouth Avenue – introduce sections of double yellow lines 'No waiting at any time'
- Station Road **Thames Ditton** between the High Street and Basing Way – introduce sections of double yellow lines 'No waiting at any time' and single yellow lines 'No waiting every day 8am-6.30pm'

- Weston Green Road, Weston Park, Newlands Avenue (**Weston Green**) at the junctions and opposite the rear entrance of Weston Green School – introduce sections of double yellow lines 'No waiting at any time'
- Weston Avenue and Lime Tree Avenue, (**Weston Green**) – introduce sections of double yellow lines 'No waiting at any time' at the junctions and in the turning circle
- **East Molesey** Controlled Parking Zone (CPZ) – To extend the operational period of the CPZ to provide turnover of parking spaces for visitors to use on Saturday and provide four 30 minute parking spaces with a higher turnover for short-term visitors.

Winter flowers, spring bulbs and the Christmas tree



John Lyon planting spring bulbs along Ember Lane

This autumn local resident John Lyon planted daffodil bulbs throughout Weston Green and Thames Ditton. This is the 26th year that the Residents' Association has

funded this planting and the results will be seen next spring, not only the hundreds of bulbs planted this year but those that are spreading naturally.

To brighten up the winter months RA volunteers Francine and Giselle have re-planted the Fountain roundabout in Thames Ditton with winter pansies. Thank you to all our volunteer planters and to Andrew James for watering the flowers through the year.

The pouring rain wasn't enough to dampen the enthusiasm of the Thames Ditton In Bloom volunteer gardeners who gathered at Thames Ditton station in October for the autumn/winter planting of the wheelbarrows and planters. This time they joined forces with the Women's Institute, officers from EBC and South West Trains staff to clear the summer display and replace it with autumn/winter planting.



Planting winter pansies

Soon commuters and visitors will be cheered by a riot of red, yellow and blue polyanthus, white and pink bellis, pansies and trailing ivy, with mini-daffodils and tulips making a welcome appearance in the spring.

In the meantime the Association's Highways Convenor Andrew Roberts has organised the Christmas tree and lights for

the Fountain roundabout and the Christmas lights on Weston Green, which will be lit in early December.



Thames Ditton in Bloom planting team

Happy Birthday Farmers' Market

In October the Farmers' Market celebrated its first birthday. Held monthly at the George & Dragon car park in Thames Ditton it has quickly become a firm favourite with local residents, offering a chance to buy great things and meet your neighbours.



Farmers' Market team and birthday cake

Keep Weston Green clean Campaign

Many thanks to those who responded to the plea for volunteers to form a litter-picking group. All volunteers will be meeting shortly to plan the way forward. Should anyone else wish to join the group

PAINTERS & DECORATORS

We are residential painters and decorators with 20 years experience, we offer wallpapering, painting and paint effects for internal and external decorating

We work in a clean and efficient manner, causing minimal disruption in your home and come highly recommended



Painters and Decorators

Contact Clive Hogg
to discuss your
decorating needs

020 8339 0712

m: 07957 582296

e: clive.hogg.ch@gmail.com

15 Hampton Court Avenue, East Molesey, Surrey, KT8 0BG

SCIENCE TUITION

A Level & GCSE Tuition

Biology, Chemistry & Physics

Tel: 020 8398 7365

**Alan Tucker:
2 Gainsborough Close,
Esher KT10 8JR**

**alan@asbtucker.co.uk
Enhanced CRB**

MICHAEL MOULE ANTIQUES

CONSTANTLY REQUIRE THE FOLLOWING ITEMS

All Furniture Pre 1920, Silver and Silver Plate,
Brass and Copper, All Clocks, Porcelain, Bronze
and Marble Statues, All Paintings, Gold Jewellery,
Old Dolls, Books, Pewter, Swords, Curios.

ANYTHING OLD AND UNUSUAL

For a fast and friendly service do not hesitate to
telephone any time, with absolutely no obligation.

IMMEDIATE CASH SETTLEMENT

020 8398 8072

26 Basing Way, Thames Ditton

– please get in touch – Cllr Tannia Shipley
tshipley@elmbridge.gov.uk

Planning

The application for **Mill Road Depot** (2016/2532) was debated at the East Area Planning sub-committee in September. Permission was granted with the conditions set out in the agenda, subject to amended conditions, additional condition and an informative. The application will go to the next full planning meeting on 22 November.

Esher Tyre and Exhaust (2016/1963) An application for eight flats has been refused because of incongruous and overbearing impact.

The application for a storage depot on **Angel Road** (2015/0598) has been dismissed at appeal. Residents will be relieved; the application attracted 145 objections.

The RA supported some 40 residents who oppose the latest application to develop on land behind the **east side of Speer Road** (2016/2364). A previous application was rejected by EBC and the planning inspector.

We objected to the application for an additional property at **31 Embercourt Road** (2016/2576) as this was previously rejected by EBC.

On the basis that no parking is to be provided the RA has written in support of residents opposing the development at The Raintree (2016/1066) (originally the Masons Arms) on the Portsmouth Road.

The Environment Agency has objected to the application for a water activity centre at **Hurst Park Open Space** (2016/2760) for three reasons; flood risk; risk to nature conservation and fisheries; inadequate buffer zone to the River Thames.

The Community Advisory Group of the Thames Landscape Strategy (Weybridge-Hampton-Kew) has also objected as it considers the application to contravene guidance set out in the Thames Landscape Strategy.

The RA has objected to two applications for **advertisements on roundabouts** – one on the Hampton Court Way roundabout junction with Embercourt Road (2016/3154) and one on the Scilly Island roundabout (2016/3161).

Remembering

On Remembrance Sunday, November 12th, following a service in St. Nicholas Church, Martin Wilberforce, Residents' Association President, laid a wreath on behalf of the RA at the War Memorial on Giggs Hill Green. Councillor Tricia W. Bland laid a wreath on behalf of Elmbridge Council.

Councillors Nigel Haig-Brown (for Elmbridge) and Tannia Shipley (for the Residents' Association) laid wreaths at the War Memorial at All Saints, Weston Green.

Weston Green Community Quiz



Will you be the winner of the Weston Green Quiz prize 2017?

The second Weston Green Quiz will take place on Saturday January 21 2017. Last year 11 tables battled it out to be Weston Green Quiz Champions and take home the coveted Weston Green Mugs!

Concerned about the performance of your Personal Pension or Stocks & Shares ISA?

**knightjames**
Wealth Management

**A friendly, local
and professional
service**



Mortgages
Equity Release
Investments
Tax Planning
Commercial Insurance

Call: 0208 398 6677 – www.knightjames.com

6 Station Road, Thames Ditton, Surrey, KT7 0NR

If you're having an outdoor event call us & let us put you.....

**Undercover
Event Tents**

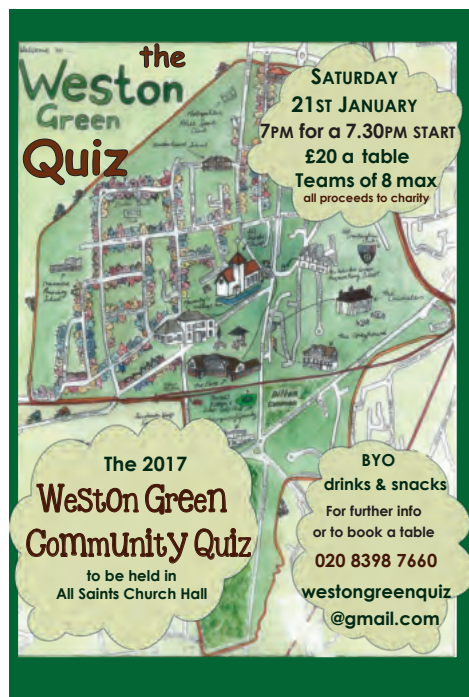
We specialise in offering a wide range of marquee solutions to suit any social or commercial event in south east london & surrey

Phone: 0208 398 7219
Mobile: 07864 585 181
email: undercover.events@yahoo.co.uk
web: undercovereventtents.co.uk



Last year the quiz was fully booked so please email westongreenquiz@gmail.com or call 0208 398 7660 to book a table.

The Quiz will take place at 7.30pm in the Church Hall of All Saints Weston. Please bring your own drinks and snacks. Glasses will be provided. Tables cost £20 and should have a maximum of eight people.



River Thames Scheme

Tina Donaldson, (Community Resilience Advisor, River Thames Scheme, Elmbridge, Richmond & Kingston) is holding a number of 'surgeries' to update residents about the River Thames Scheme. Dates and times are shown below.

Molesey Library

Walton Road, West Molesey, KT8 2HZ
November 22 2016, 3pm to 7pm

St Nicholas Parish Hall, Thames Ditton
Summer Road, Thames Ditton KT7 0QQ
November 24 2016, 3pm to 7pm

Teddington Library

Waldegrave Road, Teddington, TW11 8NY
November 29 2016, 2pm to 6pm

Black Swan Sea Cadets Hall, Shepperton

Black Swan Sea Cadets, River Ash Estate, Shepperton TW17 8NG
December 1 2016, 2pm to 8pm

Kingston Borough Council Offices

Room 41 Guildhall, High St, Kingston, KT1 1EU
December 7 2016, 3pm to 7pm

Tina has said that these surgeries will be on a much smaller scale than previous River Thames Scheme public drop-ins you may have visited in the past. She and one of the engineers working on the design of the scheme will be present to answer questions, or just be present so that residents can call in and find out the latest information.

Dates for your diary

Farmers' Market Saturday November 26, George and Dragon car park from 9-1pm

Thames Ditton High Street

Christmas Fair Sunday December 4 from 3-6 pm

Christmas Farmers' Market

Sunday December 18, George and Dragon car park from 9-1pm

Weston Green Community Quiz

Saturday January 21, 7.30pm, Church Hall, All Saints Weston

Residents-Association.com

Improving outcomes for students in secondary education



Student events for February half-term:

- ✓ Revising for GCSEs / A-levels
- ✓ Grammar, punctuation and spelling masterclass
- ✓ Study skills for securing academic progress
- ✓ Critical thinking and problem solving
- ✓ Leading your own learning

What parents and students say:

'Very helpful and engaging. Made me think about how to change relationships with teachers to make them more effective.'
Year 10 student – Revising for GCSEs

'Informative and motivating. Wish we had more time.'
Year 11 student – Revising for GCSEs

'I now know how I can improve my learning and develop good working habits.'
Year 8 student – Securing academic progress at KS3

'Very many thanks for an excellent service.'
Year 7 parent – Securing academic progress at KS3

Now booking for Spring term

Venue: Hinchley Wood School, Claygate Lane, Esher, Surrey KT10 0AQ

More events and information available on our website

To book call **020 8398 9445** or visit www.educatesecondary.co.uk

READY for precious metals



In 2014 we reported on the exciting prospect of student Toby Gold from Thistledeane, Thames Ditton, representing GB in the Paralympic Games in Rio in T33 wheelchair racing. In this edition we catch up with him to find out how it feels to be a Paralympic silver medallist.

“It still feels unreal. Rio was amazing; my Dad is from Brazil so as well as family and friends from the UK we had family from over there watching me race I couldn’t believe the noise when I got into the stadium!”

Since being selected for the GB squad aged 19, Toby has gone on to win a bronze medal at the 2015 World Championships in Doha; become European champion in 2016 and won a Silver Medal in Rio. He is the current European record holder for 100m, 200m, 400m and 800m in the T33 (athletes with cerebral palsy affecting all four limbs with highest level of impairment). In the same period he graduated with First Class Honours in Sports Science from Queen Mary’s University in Twickenham. *“It has been a mad couple of years. Now I am adjusting to life after Rio and after university – training as a full-time athlete thanks to lottery funding”.*

Toby spent his first four and a half years in training with the Weir-Archer academy in Kingston and now trains with fellow Paralympian Hannah Cockcroft in Loughborough. *“We have different strengths and really push each other to be better.”*

Born with cerebral palsy, competition with his able-bodied twin brother meant he never accepted what he couldn’t do, but looked for what he could.



Toby with his silver medal from Rio

His journey to the Paralympics went via a variety of sports. Having started horse-riding as a child he moved on to rowing at the local Dittons Skiff and Punting Club.

At a Playground to Podium event for disabled athletes he sat for the first time in a sports wheelchair and got hooked on

wheelchair basketball. Finally in 2011, when a teacher recommended wheelchair racing he found his element.

At that point the support of local charity READY (Recreation and Easy Access for Disabled Youth) was crucial. READY aims to allow people with disabilities to participate in sports and to increase participation and funding for disability athletics. They sponsored Toby's first four racing wheelchairs.

Sports Aid stepped in as it became clear that Toby had talent and competition success led to Lottery funding to help him become a full-time athlete.

Alongside an intense training schedule Toby coaches wheelchair basketball once a week, gives talks as an ambassador for READY and gets involved with promoting para-sport. He also plays the piano in his

spare time. Having cerebral palsy he has to spend time training the muscle memory in his fingers. A silicon keyboard is one of the bits of kit he travels with to fill any downtime.

If Toby's story has inspired you to get into wheelchair sports Richmond Knights Basketball Club has a Wheelchair Basketball Club for children of all ages and abilities (including able-bodied players) and they provide sports wheelchairs for players attending www.rkbc.co.uk.

If you would like to try wheelchair racing or other para-sports you can find information on disability athletics on the England Athletics website: <http://www.englandathletics.org/disability-athletics>

You can support the great work of the READY charity, via its JustGiving page at www.justgiving.com/readycharity/.

FUNERAL DIRECTORS AND MEMORIAL STONEMASONS



THE FAMILY YOU CAN TURN TO...

Seven generations of our family have been helping and advising local families in their time of need. For over 230 years we have been providing funerals, both modest and traditional, with care and compassion.

ESHER:	78 High Street	01372 463903
EAST MOLESEY:	156 Walton Road	020 8941 1412
THAMES DITTON:	37 High Street	020 8398 4586

Lodge
BROTHERS 1780
the family you can turn to

www.lodgebrothers.co.uk



ASK ABOUT OUR
PRE-PAYMENT
FUNERAL PLANS

Custodian Trustee: HSBC Trust Co. (UK) Ltd.

A jewel in the Thames Ditton Crown



Did you know that right on your doorstep there is a vibrant and flourishing theatre, offering high-end entertainment at a local price?

The Thames Ditton Theatre has been hosted by the Vera Fletcher Hall for over 30 years, and following the retirement of Ruth Lyon and Joan Leifer, it is now under new management.

Building on their legacy, Gilda Saxton, Claire Evans and a team of volunteers give their time to run an annual autumn and spring programme of theatre, packed full of top-quality shows for all ages. The tough economic climate has seen the closure of many local community theatres, but thanks to the generosity of the RC Sherriff Trust, the love and energy of the volunteers and regular audiences, the Thames Ditton Theatre is thriving.



Gilda Sexton (left) and Claire Evans

Gilda previously owned a lighting business and first got involved when she led and won a bid to the RC Sherriff Trust to help further develop the theatre's artistic programme, such as purchasing a new digital projector so audiences can benefit from great film nights and performances using multi-media techniques.

Claire has a professional theatre background, initially as a theatre agent, and then

directing and producing her own shows. In her professional role Claire comes across a wide range of acts and has introduced new performers while keeping the firm favourites.

Claire says: *"We know our audience love the annual Charles Court Opera panto, so this January we are extending our panto season with three showings of their 'Pinocchio' (including a matinee);*

and as an extra treat, we have booked the *Isosceles Theatre Company* to perform their dark comedy drama 'Behind You', exploring the underbelly of panto-land."

"Our audiences are able to see the *Charles Court Opera* for £18," Gilda adds, "whereas at the *Kings Head* in Islington you would have to pay £29 for the same show, let alone the train fare. On top of this great price, we are offering a double discounted ticket if you book for both 'Pinocchio' and 'Behind You'. Or get a discount when you buy for a group."

Gilda and Claire believe that The Thames Ditton Theatre is a resource which can enrich everyone's lives, and their ambition is to continue providing and developing further a regular and wide-ranging mixture of classic and modern entertainment with something for everyone. This might include

comedy, drama, children's shows, or live music such as classical, or jazz on one of the 'Strictly Sunday' evenings when the theatre goes 'cabaret style' with candles on the tables. They have rejuvenated the website to enable online bookings and use their professional networks and social media to spread the word.

See 'What's On' (page 46) in this magazine or subscribe to the e-newsletter at www.verafletcherhall.co.uk. If you have suggestions or would like to volunteer – particularly if you have sound and lighting or press and publicity skills - contact Gilda on enquiries@verafletcherhall.co.uk or Claire on pr@verafletcherhall.co.uk. Or come and meet them on their stall at the Farmers' Market on Sunday 18 December.

Julie Royce




WESTON GREEN
020 8398 6027
24 Hour Answerphone

Orthodontics
for Children & Adults
Jane Eden BDS(Lon), MSc(Lon), MOrth, RCS(Eng)
Fraser McDonald BDS(Lon), MSc(Lon), PhD, MOrth, RCS(Eng)

- Gentle and Caring Environment
- Private and NHS Practices
- Evening and Saturday Appointments

Available Privately

PRIVATE Practice:
Yewhurst
Weston Green
Thames Ditton
Surrey
KT7 0JZ

NHS Practice:
Oak Lane
Twickenham
TW1 3PH





www.weston-green-orthodontics.co.uk E-mail: wgop@jeden.freeserve.co.uk

A welcome addition to the High Street



I was delighted to see the recent arrival of a fishmonger and his van to Thames Ditton, bringing yet more shopping choice to our High Street. Bradley Taylor comes every Tuesday afternoon from 3pm to 4.30pm and parks by Paulls Greengrocers. His fish is super-fresh and nothing is frozen. He is in Grimsby Market at 2am on a Monday buying just-landed fish. At 8am he is in Oxford in the main market. In the evening he is in Chalfont St Giles selling door to door; on Tuesday he with us, having added Thames Ditton to his run.

Like our son-in-law, Bradley comes from Grimsby. It is a town I know well and it is rather a sad one. The reduction of the North Sea fishing fleet, combined with landing quotas, has brought high unemployment to the area. This has been compounded by the closure of the Birds Eye factory. The comparison to our buzzing and somewhat frenetic South East is palpable.

In no way has this deterred this get up and go young entrepreneur. His family has been involved in the fish industry for three generations and Bradley is no exception. He left school with an aim. After leaving school he did labouring jobs and lived at home, which meant by last year, aged only 20, he was able to buy his own refrigerated van. He took this on a small 'test -run' and in only a year has expanded to include TD, just in time for his 21st birthday.

It is a strange fact that in our islands, where we are never more than about than 70 miles from the coast, we eat less fish than most

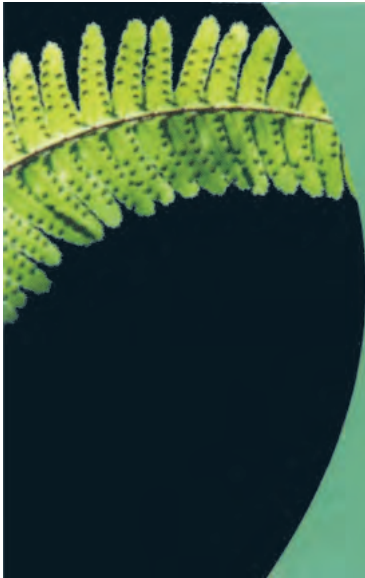
other countries. I have been in a market in Madrid where in an amazing display there was a huge array of seafood including cold water fish such as cod, haddock, hake and prawns, which 24 to 36 hours before were being caught in the seas around us. It will have been sold as it landed, crated and taken to the continental markets within hours. I have been to an indoor market in Avignon where there is a 90ft counter that doesn't smell of fish, everything is so fresh.



The author with Bradley Taylor and his Fish Van

So welcome to Thames Ditton Bradley, and good luck! We are always being urged by health specialists to eat more fish so I would like to tempt you with two of my favourite recipes. The majority of the cooking can be done in advance, so no need to panic!

Hilary Hepburn



M.P.B. Landscapes

All aspects of work undertaken:
hard and soft landscaping, patios,
fencing, decking, brickwork, turfing.

Mark Blunden

Landscaping since 1993
fully qualified, Merrist Wood trained

Tel: 020 8398 3509

Mobile: 07957 281 748

E-mail: markblunden@yahoo.co.uk

DOWN TO EARTH



**27 Church Walk
Thames Ditton
Surrey
KT7 ONP**

Phone: 020-8398-7219

Mobile: 07867-590-450

E-mail: downtoearth2008@live.co.uk

A family run, local gardening service

GARDEN MAINTENANCE, CLEARANCE & DESIGN AT AFFORDABLE RATES

Gardens can get out of hand very quickly, sometimes
it can be hard to keep on top of it all year round.

We can provide total garden clearances', regular gar-
den maintenance, garden design, fencing & paving, to
help create.....(and keep) the garden you've always
wanted.

Why not give us a call or drop us an e-mail to see
what we can do for you?

Home

Kedgeree

It is not all doom and gloom in Grimsby; they still smoke haddock in the traditional local fashion as they have done for generations. Happily we are now appreciating our own local produce more and more.

Ingredients (serves 4)

500g smoked haddock
1 bay leaf
milk/water (enough to cover fish)
2 tbs olive oil
bunch of parsley, chopped
3 hard boiled eggs
1 onion, chopped
400g rice (I find Uncle Ben's long grained rice good as it gives clear amounts for each serving)
3 tsp cumin seeds
1 tsp turmeric
butter for serving
salt and pepper to taste

Method

Put haddock with mixture of milk and water and bay leaf in a saucepan and bring gently to the boil. Remove from the heat, put the lid on and leave to cool. Drain, skin and flake the fish.

Put onion in frying pan with the oil and gently soften, be patient as it takes a little time. Add the cumin seed and turmeric. Once softened, cook for a further two minutes. Add the flaked fish. You can complete the dish now or leave it until later. Cook the rice as per the packet instructions, drain and add to the fish mixture. Gently heat for a few minutes, add chopped parsley and grated hard boiled eggs. Serve. A dab of butter on each serving is a good addition.

Away

Spanish cod stew

Ingredients (serves 4)

500g cod, skinned, and chopped into chunks
100g cooking chorizo
1 onion, chopped
1 red and 1 yellow pepper, chopped
2 cloves of garlic, finely chopped
1 tsp sweet paprika
2 tsp oregano
1 can of chopped tomatoes
4 tbs olive oil
100 ml of stock (vegetable/fish)
300g small waxy potatoes (sliced)
1 glass of white wine (about 125 ml)
salt and pepper to taste
toasted pine nuts

Method

Gently fry the onion in oil. Using a potato peeler skin as much skin off the peppers as you can, then halve, de-seed, chop and add to the onions and soften. Then add the chopped chorizo, the garlic, paprika and oregano. Add the wine then turn up the heat and reduce the wine to nothing. Add the tomatoes and stock. Bring to the boil, then turn the heat down to a simmer, and add the sliced potatoes. Cook the potatoes until cooked (about 10 minutes). You can finish the dish now or leave for a few hours. Bring sauce to the boil, taste, reduce the liquid if necessary. Add the chopped cod, cook for 5 to 7 minutes. Add the toasted pine nuts and serve with crusty bread.



Claremont Fan Court School

An independent co-educational school for pupils aged 2½ to 18 years

Open Mornings



Whole School - 10.00am-12.30pm

Introductory talk at 10.00am

Saturday 4 February

Saturday 11 March

For further information, tel **01372 473624**
or email **info@claremont.surrey.sch.uk**



Nursery
Pre-Prep
Prep
Senior
Sixth Form



Sunday 4th December 3-6pm

Thames Ditton High Street

Festive Spectacular

Christmas Fair
Programme

Supported by

**THAMES
DITTON
TODAY**

The Magazine of our
Residents' Association

❄ pull-out guide ❄

All the Fun of the Christmas 2016 Fair!

Aldous Craig – Receive a warm welcome, delicious mulled wine and sizzling BBQ with proceeds to local charities.

Angelina Colarusso – Here you'll find the most magical Christmas window in the land.

No30 Antiques – Looking fabulously festive, find Cancer Research UK Christmas cards.

Assimi – Roll up, roll up for a special raffle for Macmillan Nurses.

Biscuit and Paws – Don't forget to turn the corner into Station Road to find that perfect Christmas present for your canine and feline friends.

CycleLink – Stop here for an exciting range of gift ideas for both the avid and leisure cyclist. Also, race a friend on CycleLink's 'virtual racetrack' with proceeds to a local charity.

George & Dragon – Make your way to G&D's festive BBQ and special recipe mulled wine. Plus entertainment from Thames Valley Morris Men.

Hawes & Co – Go up, up and away with the Balloon Race game, all proceeds to charity.

HJC – Find delicious mince pies and mulled wine in aid of Street Child Africa. Plus win a prize with the 'lucky envelopes' game.

Ironing Board – Children can discover Santa in Sheila's crystal grotto with fairies and elves and collect an early Christmas gift.

La Clinique – Pamper yourself with 10% off gift vouchers and products at the Fair.

Lime Tree – Find a fabulous Italian Christmas experience with sparkling Prosecco and delicious panettone.

Local Pizza – Celebrate la dolce vita with pizza and Prosecco.

Lunch – Don't miss Jennifer's fab festive spread of sausage rolls, cakes and hot and cold refreshments.

Maud – A must for luxury gifts plus a 'wish list' service to ensure the special people in your life get what they really, really want.

Nice Buns Café – Find piping hot sausages on sticks, mince pies, winter white rocky road, lashings of hot chocolate plus heaps more!

Organic Nest – Find Christmas food and beauty hampers and festive organic fruit and veg boxes plus pre-order your organic turkey or goose by award winning Rhug Organic Meats Farm.

Paull's – 'Guess how many sprouts?' game to win a large seasonal fruit and veg box, proceeds to the Princess Alice Hospice. Plus pick up your Christmas order forms for Paull's seasonal boxes.

Red Lion – The team will be smoking hot with sausages and mulled wine. Plus play the game: 'catch the present down the chimney' in aid of IYAF (Int Youth Art Festival).

The Rose – The place for delicious lamb and vegetable samosas; vegetable pakora, chicken wings and nan. Yum!

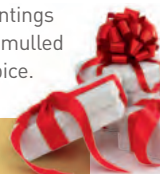
The Secret Garden – Discover beautiful Xmas wreaths, festive floral arrangements, table and tree decorations.

The Stitchery – Be dazzled by a festive extravaganza of Christmas lights and spectacular selection of gifts. Plus, spend £80 and receive a delicious £10 box of chocolates absolutely free!

View Gallery – Featuring a totally different take on Surbiton Station with 15 original oil paintings by Martin Alton. Plus, our famous Malbec mulled wine with proceeds to Princess Alice Hospice.

Raffle: 20 Fabulous Prizes to be Won!

This is our biggest raffle ever so don't forget to purchase your Christmas Fair raffle tickets and with it your chance to win one of 20 absolutely fabulous prizes. Available from early November, look out for posters in participating High Street outlets. Proceeds to **Keep the Heart in our High Street Campaign** supporting our local shops and businesses and the **High Street Christmas Lights Appeal**.



That's Entertainment – Festive Spectacular Thames Ditton Style!

All lit up!

This year at the Fair our twinkling lime tree **Christmas lights** are being 'switched on' by **Toby Gold**, resident of Thames Ditton, who won a silver medal in the T33 100 metres in the 2016 Paralympic Games together with **Tannia Shipley**, RA councillor for Weston Green and the current **Mayor of Elmbridge**. Make your way to the lime tree for **4.45pm** when Toby and Tannia will flick the switch to set in motion the lighting up of our High Street for the entire festive season.

A major highlight is this year's **Christmas grotto** - the most spectacular yet! The Ironing Board has been transformed into a magical, snowy setting where you'll find Santa on his

sleigh with his fairies and elves and a sack of gifts for the children. This is your opportunity to take a photo of Santa with your little one, so join the queue early to avoid disappointment!

We are also delighted to welcome **children's entertainers, M&C Parties**, who will keep youngsters enthralled throughout the Fair with their fun and games.

Children inspired by our twinkling Christmas lights are invited to attend in festive **fancy dress** - there will be prizes for the most creative costumes. And not forgetting our canine friends, we also have a **fancy dress competition for dogs** with a special first prize of a hamper filled with canine and feline gifts!



On the Programme

Esher College BTEC Performing Arts students present Musical Mayhem – a collection of much loved songs from various musicals.

The renowned **Hinchley Wood School Choir and Brass Band** will be singing and playing our favourite Christmas Carols and songs.

Students from the **Mark Jermin Stage School**, established by actress **Charlie Brooks** will give a specially choreographed performance. The school offers training in the performing arts for children and young adults 4-18.

David Goo will present a special set of upbeat, fun loving acoustic madness in his inimitable style.

Students from the **Starlight Academy of Dance and Performing Arts** will display their dance and musical talents. The Academy offers a wide range of classes from ballet to street dance, musical theatre to modern jazz for boys and girls from 2 years to adult.

Thames Ditton Infant School choir will be singing traditional Christmas carols.

Not forgetting... The Brownies, The Thames Ditton Crafters, The RNLI with Stormy Stan the Lifeboat Man and the Lifeboat Board Game, St Paul's Primary School, Weston Green School, plus community groups and stalls.

Thanks to all our Entertainers

**Our brilliant
Hosts and Comperes,
Rob Hutchinson MBE
and Brett Alderton**

Mark Jermin School
01792 458855

Esher College
020 8398 0291

**Starlight Academy of Dance
and Performing Arts**
01276 476667

Hinchley Wood School
020 8398 7161

Thames Ditton Infant School
020 8398 5842

David Goo
batovrecords.com



**ESHER
COLLEGE**



HINCHLEY WOOD SCHOOL
INSPIRING LEARNERS



... and everyone else who takes to the stage and the street, showcasing their fantastic talent, free for the benefit of the community.

Thanks to all our Fair sponsors/supporters – we couldn't do it without you!

**The Thames Ditton &
Weston Green Residents'
Association**

Thames Ditton Today

**RJP Accountants
& Tax Advisors**

**Cllr Peter Hickman and
Surrey County Council**

HJC Estate Agents

Hawes & Co

The Set Up Design

TMG Design & Build Ltd



The Thames Ditton High Street Christmas Fair 2016 is organised by The Thames Ditton & Weston Green Residents' Association and the Thames Ditton High Street Retailers' Association – thanks to everyone in the team.



Organised by the Thames Ditton High Street Retailers' Association and the Thames Ditton & Weston Green Residents' Association

**THAMES
DITTON
TODAY**
Supported by
Thames Ditton Today

**SURREY
COUNTY COUNCIL**
Supported by
Surrey County Council

In the bleak midwinter... Services to bring you joy



At this time of year the days may often seem short and dark and in Christina Rossetti's words 'bleak', but for Christians, Advent, the four weeks before Christmas, is one of the most joyous times of the year. Christmas is coming and all are preparing to celebrate the birth of the Christ child. Christmas trees appear, mince pies are eaten, stockings hung by the fire and carols sung – all traditions that point out that this is a special time.

In our increasingly secular world, many would say that Christmas has been hijacked as a commercial event. Certainly, mince pies and Christmas cards seem to appear ever earlier in the shops. However, even for non-Christians and those no longer practising the faith, there is an excitement, an awe about Christmas that attracts them to hear the magical old story of the birth of Christ and to join in the celebration.

This year Advent begins on 27 November though the Christmas celebrations usually start in December. All of our churches have a variety of Christmas activities (in addition to the normal services) to which all are welcome – whether you are a Christian or not. The children's activities range from Toy

Services when congregations bring in toys that will be donated to various local charities, Tots Praise in Church, various Christingle services, Crib services and a Children's Christmas Eve Candlelight service, at all of which the Christmas story is retold for the little ones – and some not so little! There are also children's Christmas parties and arts and crafts sessions that promise fun for all involved.

For adults – aside from various church services, including the Nine Lessons and Carols services in which the Christmas narrative is intermingled with carols, there are social gatherings such as the Christmas Medley at the URC with a selection of music, poetry, stories and carols (plus mince pies and mulled wine!) to get you into the Christmas spirit. Check with the other churches to see what they have on offer.

This year we are adding a number of other churches to our listing including (because of the electoral boundary changes) two from East Molesey. Below are listed the Christmas activities of all the various churches though you can always check their websites to see what else is happening at the Church. (Yes – all the Churches have websites!)

All Saints Weston (C of E)

11 December	4pm	Christingle service
18 December	7pm	9 Lessons and Carols
24 December	2 & 4pm	Crib services
	11.30pm	Midnight mass
25 December	9.45am	Christmas Day Family Eucharist

Our Lady of Lourdes (RC)

11 December	5pm	Advent carols by Candlelight
24 December	6pm	Vigil mass of Christmas
	10.30pm	Carols followed by
	11pm	Mass of Christmas night
25 December	9 & 10.45am	Christmas Day mass

Speer Road United Reformed Church

27 November	4pm	Teatime Advent Worship
3 December	7 for 7.30pm	A Christmas Medley of songs, stories, poems and carols
11 December	10.45am	Toy service
18 December	10.45am	Nine Lessons & Carols
	4pm	Teatime Christmas service
24 December	6pm	Children's Candlelight Christmas service
25 December	9am	Christmas Day service

St Christopher's, Hinchley Wood (C of E)

4 December	4pm	Christingle café
10 December	12.30-3pm	Christmas Lunch for the Elderly
12 December		Christmas carol singing at Grace Lodge and Gibson Court
18 December	6pm	Carol Service
24 December	3pm	Crib service
	11.30pm	Midnight mass
25 December	10am	Christmas Day All-age Communion service

St Mary's, Long Ditton (C of E)

11 December	4pm	Christingle service
19 December	6pm	Nine Lessons & Carols followed by mince pies & mulled wine
24 December	3pm	Crib service
	11.30pm	Midnight mass
25 December	8am	Holy Communion
	10.15am	Family Communion

St Mary's, East Molesey (Cof E)

10 December	10am-1pm	Christmas Fair (free entry)
18 December	6.30pm	Carol service followed by mince pies and mulled wine
24 December	3pm	Christingle service
	4.30pm	Christingle service
	11pm	Midnight Communion
25 December	10am	Christmas breakfast
	10.30am	Family service followed by coffee & pastries

St. Nicholas' Thames Ditton (C of E)

4 December	10am	Family Toy service
8 December	9.30 am	Tots Praise
10 December	2-4pm	Family Christmas crafts in church
18 December	10am	Christmas Sunday School crafts
	3pm	Christingle service
	6.30pm	Nine Lessons & Carols
19 December	12 noon	Carols for the TD business community
24 December	3 & 5pm	Blessing of the Crib
	11.30pm	Midnight Communion
25 December	8 & 10 am	Christmas Day service

St Paul's, East Molesey (C of E)

18 December	6.30pm	Candlelight carol service
24 December	4pm	Crib service
	11.30pm	Midnight mass
25 December	10am	Family Christmas Day service

Whatever your faith or beliefs, may this holiday time be a happy one for you and, if you feel like joining in any of the activities listed above – please do. You will be very much welcomed. And when the joyful Christmas bells ring out on Christmas morning, may the traditional Christmas blessing of – ‘Peace on Earth, Good will to all people’ – be taken up so that in our troubled world joy may come to all. A happy and blessed Christmas to you all.

Linda Lambert



simon simpson

BA(Hons) MSc MAREBT BABCP UKCP MNRHP

Cognitive Behaviour Therapy
Clinical Hypnosis



Registered with Bupa
and all major insurance
companies

Expert, confidential treatment for:

- Panic
- Workplace Stress
- Low Self Esteem
- Insomnia
- OCD
- Depression
- Anxiety
- Irritable Bowel Syndrome
- Phobias
- Anger

clinics in Esher, Hampton Court and at The London Bridge Hospital

full details at: www.cbt-surrey.co.uk tel: 07801 450 477



Rarely seen...

...a collection of five luxury townhouses in Thames Ditton.



show home ready!



Royal Thames Walk, Claygate Lane

Five bedrooms • Huge family room/gym/cinema room • Stunning kitchen/dining space • Approx 2800sq ft • Secure underground parking • High specification throughout • West facing balcony & walled gardens • Due for completion December 2016



Pop in to see us for a chat or contact **Tuesday** for more information or to book a viewing of the show home

020 8398 3707 tuesday@hjc.co.uk

HJC Estate Agents, 2 High Street, Thames Ditton KT7 0RY

Surbiton from Alton



Martin Alton in his studio with his elegant Intaglio printing press

Did you ever have an Athena poster of a moody James Dean in your student digs, or perhaps a sexy Marilyn Monroe was more your style? If you did then you may have already owned work by local artist Martin Alton. Or you may have seen his work on exhibition at View Gallery when walking up Thames Ditton High Street. In advance of his new exhibition at View, I met up with Martin in his workshop in Willowbank, Claygate Lane, next door to the Thames Ditton Miniature Railway. This treasure is run by Malden and District Society of Model Engineers where Martin

is a member; when he is not painting he is absorbed in the technical world of engines.


All in all it seemed a fitting location for a man who started his working life illustrating the engineering feats of British Aerospace at their Hawker factory in Kingston.

Martin went straight from school to the Hawker factory to train as a City and Guilds Technical Illustrator. The life suited him and he stayed with the company for 35 years, moving to Quinton Road, Thames Ditton when he got married. Starting in the days before computer aided design



Backache?

Osteopathy
Acupuncture
Chiropractic



Neck and Shoulder pain?

It is common, not normal.

Book a free 15 minute consultation before the problem gets worse

Clinics in Thames Ditton & Kingston
020 8786 6367 www.spinaljoint.com

7 Lime Tree Avenue KT7 0NA



SpinalJoint

and 3D illustration software the technical illustrators brought the engineering concepts to life. *“I really enjoyed being part of the engineering world and being able to represent what they were trying to achieve.”*

However, the work was very precise and constraining and in his spare time Martin started to stretch his artistic muscles. Inspired by airbrush artists Philip Castle and Michael English he started to produce some pop art posters of his own. Snapped up by Athena in its heyday Martin produced a great many of their popular posters over the five years he worked with them. *“It was a strange feeling seeing my work in shop windows and on TV”*

At the same time Martin was devouring books on fine art, artists and painting techniques which convinced him that there was more he wanted to do with his art, so he started to experiment with different styles and different mediums. He attended life drawing classes at the Henrietta Parker Adult Learning Centre in Molesey and was thoroughly inspired by his teacher Kim Stevens of the Royal Academy, so much so that 25 years later he himself teaches life drawing.

Reading about Picasso and cubism he started to experiment with deconstructing images and to develop a much more personal fine art style. Talking to him I got the impression of an explosion of art released from the precise constraints of technical illustration. This coincided with the opening of View Gallery specialising in contemporary art, and when they saw his portfolio of experimental art they offered Martin his first exhibition of more personal work. Thames Ditton Today caught up with him at the time (2006) and described the

work as *‘beautiful, some sombre, some stunning, others disturbing. All wholly unexpected.’*

Martin’s new exhibition at View is another change of direction. Inspired by the wonderful art deco railway station at Surbiton he has created a new body of work celebrating its iconic design and the world of the commuter.

At first an unlikely subject, he was prompted by sales of his pen and ink drawings of the station to explore the theme of commuting and the role of the railway station in our lives.

Martin’s exhibition of 15 original oil paintings will be at View Gallery in Thames Ditton High Street from 5 November until January 2017 www.viewgallery.co.uk



Deco Icon Oil on canvas

Libby MacIntyre

RUSSELL-COOKE | SOLICITORS

We can offer you high-quality specialist advice on most legal matters, personal or professional - from employment-related issues to property transactions, wills and estate planning, relationship breakdown and the care and protection of the elderly.

+44 (0)20 8546 6111

www.russell-cooke.co.uk



NEIL EVANS

HEATING & PLUMBING SERVICES

Repairs • Parts • Bathrooms • Boilers • Gas • Plumbing

Local Qualified **PLUMBER** and **GAS SAFE** Engineer



www.neilevansplumber.co.uk
email: neil@neilevansplumber.co.uk
messages: 020 8398 4259 • mobile: 07906 412 170



THAMES DITTON UNITED REFORMED CHURCH

Speer Road – close to Thames Ditton station

Services at 10.45 on Sundays

Secretary: Mrs Linda Lambert

Tel: 020 8398 1476 – Email: lindanmlambert@aol.com

WELCOME TO ALL

Find us at <http://www.tdurc.org.uk>

Hall bookings telephone: 020 8224 6396



George Jarvis and his charity



George Jarvis, the third son of a yeoman farmer in Herefordshire (whose name was spelled Jervis), was born in Staunton-on-Wye on 18 August 1704. At the age of 13 he walked with the cattle drovers along the drove road to London, where he was engaged in a seven year apprenticeship to Organ Egglestone, a Currier. There followed a successful and lucrative career in the London leather trade, with many apprentices of his own, enabling Jarvis finally to buy the Mansion House on Weston Green in 1758.

The Mansion House (known in the following century as Weston House) had been built in the early 1700s to the order of Shem Bridges of Imber Court, Lord of the Manor of Imber, and was occupied subsequently by Rose Bridges, one of the nieces of his cousin Henry Bridges who inherited. She died in 1728 and I assume that the house remained in the possession of her husband, Lt. General Richard Onslow, the brother of Sir Arthur Onslow who married her sister Anne Bridges and thereby came into Imber Court. General Onslow died in 1760, two years after Jarvis had bought the house.

George Jarvis continued to commute in his two horse chariot from Weston Green to his successful business in the East End until about 1765. He saved and invested wisely in stocks, and his wealth multiplied.

Jarvis married three times, to the daughters of other London businessmen. Of these, his second wife Rebecca Blaksley bore him three daughters, but only one, Mary born November 1733, survived. Mary's story as

his only child became one of the crucial elements in her father's closing years. To set the seal on his worldly success George wanted his daughter to marry well, and must have been pleased when on 14 July 1759 she was wed at St. Nicholas, Thames Ditton, to Sir William Twysden, 6th Baronet, who was more than twice her age and clearly interested in Jarvis' money. The marriage was to become a great irritation to Jarvis.



Sir William Twysden, who married Mary Jarvis in St. Nicholas Church (and spent her money).

The Twysdens were ancient aristocracy from Kent, dating back to at least Adam de Twysenden in the times of Edward I. His descendant Sir William Twysden was in James I's entourage when he took the English crown, and was later made the first



Brighten up your Garden!

Is your garden in need of a makeover?
From planting plans to a simple injection of colour

Green Room Garden Designs can help
020 8398 5703

Anna 07801 921166 – Kate 07956 641881
RHS and Merrist Wood Qualified

R P Brown Est. 1968 - Traditional, reliable and conscientious local **plumber**

No call out and no minimum charge, free written estimates, 1 year parts/labour guarantee



www.plumb-master.co.uk

Tel: 020 8398 0207 Mobile: 07973 636672



e-mail info@plumb-master.co.uk

56 Speer Road, Thames Ditton, Surrey KT7 0PW



Brittain Hadley is an independent and professional firm of Chartered Building Surveyors offering the following services:

- Residential Surveys and RICS Condition Reports
- Project Management of refurbishment, new build and extensions
- Party Wall Awards
- Planning applications for residential and commercial premises
- Architectural drawing and design services
- Specification of works and building contract administration
- Dilapidations acting on behalf of landlord or tenant
- Advisors on sustainability matters

Tel 020 8742 7704 E-mail info@brittainhadley.co.uk
1 Claremont Road, Surbiton, Surrey KT6 4QR

Baronet. There followed a few generations of men in public service – Parliament, soldiers, sailors, doctors – but as so often seems to happen, the breed degenerated. Sir Thomas, 4th Bart., was a spendthrift. His son Sir William, 5th Bart., tried to restore the family finances through farming. The latter's brother, Philip, Bishop of Raphoe (a complicated minor bishopric of the quasi-Protestant Church of Ireland), was made bankrupt. There is persistent evidence, summarised in Tim Clarke's book published this year ("The Countess: The Scandalous Life of Frances Villiers, Countess of Jersey") that the bankrupted Bishop turned to highway robbery. The story is that he was shot by a doctor who had just dined with his brother Sir William at the Twysden family seat, Roydon Hall; the Bishop tried to rob the doctor on the latter's way home. The wounded Bishop was taken back to the Hall where he expired, and the matter seems to have been covered up. The Bishop's daughter Frances, Lady Jersey, a favourite of George IV, subsequently set up her home as a venue for society gambling.

At the time of Mary Jarvis' marriage to Sir William Twysden the sixth Baronet, the latter had run through his money, sold much of his estate and raised a large mortgage on the remainder to fund his high life and spendthrift ways. George Jarvis settled £8,000 on Mary, which paid off half Twysden's mortgage, but the latter did not rein in his spending, borrowed more, and when he died in 1765 he left Mary with a small income and a large debt. Mary asked her father for more money, but George refused. Mary's daughter by Sir William, Frances, married Lord Eglinton, then embarked on an adulterous affair with the equally married Duke of Hamilton. Grandfather George disapproved. His grandson Sir William Jervis Twysden

became the seventh Baronet at the age of 7 and on attaining his estate at 21 grew even more profligate than his father, George's son-in-law. In 1784 George Jarvis was tapped again, and this time granted his grandson a mortgage of £6,000 on the estate. The young William eloped to Gretna Green with an underage heiress, but soon got into even more debt and fled to France to avoid his creditors.

By now, George had grown exasperated and embittered as his titled, profligate progeny squandered his hard-won, self-made money as well as their Twysden inheritance. He was having no more. When he died at Weston Green in 1793, his last Will granted a very small allowance to his daughter, and a reasonable sum to two great-grand-daughters in the hope they might turn out better. There was nothing for the wastrel grandson Sir William Jervis Twysden. Aside from a few small bequests to friends, he left some £30,000 in stocks, together with the value of his residual estate, another £46,000, to set up a charitable trust. The income on what would amount to around £10m in today's money was to be used for the poor of three Hereford villages including Bredwardine, near Staunton, where he spent his few boyhood years before trekking to London and where he wished to be buried. And so he was.

The Jarvis Charity

As George Jarvis' story ended, the story of his charity began. First, his furious daughter Mary, Lady Twysden, contested the charitable provisions hard for nine years, delaying the charity's payouts. She was successful only in gaining possession of the Mansion House in Weston Green, deploying the legal argument of mortmain. Mary Twysden then sold the house in 1798 to Captain Robert Lambert RN and his wife



Weston Green
School

A thriving independent
co-educational
day school for children
aged three to eleven

So much going on...



NEW
Key Stage 2
extension
now open

Visit us and see for yourself

Call us on **020 8398 2778** or visit www.westongreenschool.org.uk
to book a personalised tour with our Headteacher

Weston Green Road, Thames Ditton, KT7 0JN

Catherine, whose story has been covered extensively in these pages.

Next, the Jarvis Charity produced far more income than the Trustees could deploy within the terms of the will for the poor in the three Hereford parishes. The Charity's annual income from interest was about twenty times as much as the combined Poor Rates. Moreover, those in receipt of parish support were not eligible for the Charity. The Trustees sought and, over the fierce resistance of Mary Twysden, won court approval to extend the terms to cover food, clothing, medical treatment, fuel for heating, apprenticeships and education, a paid Agent and clerical support to administer the charity.

The ensuing decades were an object lesson in the effect of substantial and perpetual benefits on a community which consisted mainly of low paid workers. The munificent Charity did provide schooling in rented buildings, and kept the elderly and infirm out of the workhouse. But unforeseen effects included an increase in the population as people moved to the parishes to avail themselves of the handouts; indolence, lower productivity, and a loss of morale and morals. There was discrimination, favouritism, resentment; and corruption on the part of the Charity's Medical Officer and a schoolmaster who set the children to work on his own farm instead of lessons! The parish churches resented the rich charity which dispensed benevolence outside church control, and the Rector led a divisive campaign to cast out the corrupt officials.

In 1863, even the Liberal Chancellor of the Exchequer, Gladstone, singled out the "notorious" Jarvis Charity's failings in a speech in the House of Commons -

where he used it as an example of why the taxpayer should not support such Charities by granting them exemption from tax.

Faced with continuing problems in disposing of the income in accordance with Jarvis' wishes, the Charity's Trustees sought and obtained court approval to spend money on buildings – something which Jarvis had expressly prohibited in his will. A large boarding school was built at Staunton, and some almshouses for the three parishes. Also a rather fine house for the Charity's Medical Officer and another substantial house for the Clerk. Local bigwigs outside the three parishes were appointed to oversee the matter and the regional Church authorities took a role. However, this use of the Charity's money contrary to the wishes of its founder led to a good deal of bitter bickering.

The boarding school turned out to be far too large for local requirements. Free places were granted to eligible children from the three parishes, whose parents nevertheless would have to pay a daily fee for food and other expenses, and places were extended to pupils from outside the area, but the school was largely unused. Its maintenance proved expensive, and to fund it required the Trustees to reduce the amounts of benefits paid to the local poor for other purposes. This led to a row and a local inquiry into the question of whether the Commissioners had any right to take the money that Jarvis had left for the poor of the three parishes, and spend it on higher education for persons outside the area: "middle class outsiders"!

In 1882 the Chairman of the Trustees, the Bishop of Hereford, declared that the school had been "a white elephant." Six years later, the Charity Commissioners examined the Jarvis Charity in a public

Hand crafted silver and gold

by an acclaimed master silversmith

Stunning bespoke gold,
silverware and jewellery, by
acclaimed master silversmith
Bernard Leon.

Peerless, exquisite hand crafted
finery, individually created on the
premises and totally unique.

ASSIMI

54 High Street, Thames Ditton
Telephone: 020 8972 9500



A centre dedicated to
holistic
& complementary
healthcare for all



kent clinic
of natural medicine

We offer a range of therapies that will effectively treat a variety of problems.
One of the many therapies we offer is Cognitive Behaviour Therapy...

Cognitive-behaviour therapy (CBT) is a highly effective form of talking therapy that helps people deal with emotional difficulties by addressing their underlying unhelpful thoughts and behaviours. NICE guidelines recommend CBT as the treatment of choice for a wide range of concerns, including Depression, Anxiety, OCD, Trauma, Phobias, Insomnia, and Panic.

CBT is a focused and practical process that is orientated towards discovering the source of your problems and then finding lasting strategies that enable you think and act in more appropriate, realistic, and helpful ways - putting you back in control.

To find out more and to talk in confidence about any issues that concern you, contact Kent Clinic's resident CBT therapist, Simon Simpson, on 07801 450 477.

Tel: **020 8941 2846** www.ClinicofNaturalMedicine.co.uk

Above Kent Chemist, on 2nd Floor, 104 Walton Road, East Molesey, Surrey KT8 0DL

inquiry lasting three days, the transcript of which devastatingly exposes the well-meaning ineptitude of the Trustees who, in focusing (with signal lack of success) on the high aim of the school, had failed to grant other aid to the needy and deserving in the three parishes whom Jarvis had intended to be the beneficiaries of his charity.

Thus deadlocked, the school became little more than an expensive refuge for wildlife until the coming of county councils, whereupon Herefordshire took it on as a technical school for girls (that is, cooking, needlework, laundry, housework and nursing). The Charity paid for girls attending from the three parishes but again places were offered to those outside them. Middle-class maiden ladies would spend the summers there, all found, to do a bit of voluntary teaching. The technical school, at most half full, lasted for just five years when the Charity successfully applied to the courts to have its endowment split into a large fund for county-wide educational purposes at Staunton School, and a smaller one for the original purpose of disbursing alms.

And in all, in the six decades since it had been built until 1920 when under the county council it was turned to other purposes, the school was used for little more than a dozen years!

Today, George Jarvis' funds are still producing income for his charity which is

now split into three parts. Some £43,000 a year accrues to the Jarvis Eleemosynary Charity which runs its almshouses, on which it spent just £15k in 2015. The almshouses give preference to people from the three parishes, but those from a wider area are also accepted. The Jarvis Educational Foundation promotes education in the three parishes by means of grants to individuals and support for a voluntary school. Last year its income was £28,717 and it spent £35,611: it put the dilapidated, but now Grade II Listed, former Staunton School up for sale. Lastly, the tiny Jarvis Recreational Charity disburses a few hundred pounds a year for "charitable recreational purposes" for the benefit of the three parishes.

It's not clear to me that old George's ghost would be too pleased on surveying the scene from the graveyard in Bredwardine. But at least his money was not frittered away by his irresponsible grandchildren, his funds have endured for two centuries, and they have done some good as well as causing a great deal of dissent. Would they have been better handled if he'd left them to Thames Ditton and Weston Green?!

Keith Evetts

This account relies heavily on "George Jarvis and his Notorious Charity", by Richard Pantall (1993; ISBN 0 9521845 0 8)

shop **signs** van **signs** window **signs**
for sale **signs** sticker **signs** frosting
warning **signs** banner **signs** plaques
display **signs** posters **and** more...

flyingcolours call 020 8398 1770

Solution to the Autumn Crossword

by Maureen Willcox



S	I	S	T	E	R		D	I	R	E	C	T	S	
U		P		S		V	I		O		O		A	
P	E	R	I	S	H	I	N	G		B	A	N	A	L
P		I		E		R		R		I		S		U
O	R	G	A	N		G	R	E	E	N	B	E	L	T
S				T		I		S				N		E
E	L	A	T	I	O	N		S	H	O	R	T	S	
		R		A					V		E			
	T	R	A	L	E	E		T	U	E	S	D	A	Y
C		E				N		E		R				A
A	U	S	T	R	A	L	I	A		S	T	A	R	S
N		T		I		I		B		P		B		H
T	R	I	E	D		S	P	A	R	E	R	O	O	M
E		N		G		T		G		N		V		A
R	E	G	R	E	T	S			S	T	R	E	A	K

Congratulations to the sender of the one winning entry who wins a £5 voucher to spend in local shops.

Miss Joan Harlow
67, Thistledeane,
Thames Ditton,
KT7 0YH

Alan Greenwood & Sons

Quality Funerals at a Fair Price



- A choice of the latest Jaguar or Mercedes Hearses and Limousines
- Home visit arrangements
- Pre-paid funeral plans
- Memorials
- Quality Service 24 hours day



57 Fleece Road,
Long Ditton
KT6 5JR

1 The High Street
Claygate
KT10 0JG

13 Molesey Road
Hersham
KT12 4RN

259 Ewell Road
Surbiton
KT6 7AA

020 8398 0012

01372 377 377

01932 260 046

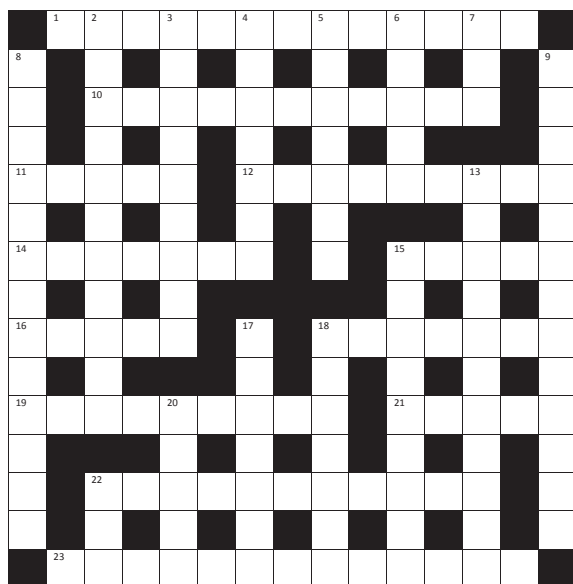
020 8399 4455

Visit Our Website for Full Details of Our Services and to View Our Obituaries

www.alangreenwoodfunerals.com

Winter Crossword

by Michael Jackson



The first three correct entries randomly opened after the closing date of 8 February 2017 will win a £5 voucher to spend in local shops.

Please send the completed puzzle (or photocopy) enclosing your name and address, with the envelope clearly marked 'Crossword Competition' to:

Thames Ditton Today
Crossword Competition
24 High Street
Thames Ditton
KT7 0RY

ACROSS CLUES

1. Musical starter, Chopin's Piano Variation on 'Camaraderie' (13)
10. Knight's pay, engaging enemy dragon (6.5)
11. Dance of colour and vigour (5)
12. Popular resort as all maps show (3.6)
14. Short simple songs (7)
15. Arabs move around here (5)
16. Poetic electrode? (5)
18. Belgian seaport (7)
19. Covered leads, unit made safe (9)
21. Drive out (5)
22. An act of drama, music, sport (11)
23. A wise man will make more of these than he finds. Francis Bacon (13)

DOWN CLUES

2. Idiots ran on upsetting ceremonies (11)
3. Cinderella's "I'm top name in this" (9)
4. The pointed rocks? (7)
5. The diffusion of fluids (7)
6. Name preceding Barbara, Maria, Monica (5)
7. She is a climber (3)
8. Promoter of peace and cooperation (6.7)
9. Glass house circa 1851 (7.6)
13. A prime example of skill or excellence (11)
15. It is edible and oily from Souari (9)
17. Great speed; in haste (7)
18. Bad foreboding upset stomach (7)
20. Musically slow (5)
22. Energy, animation (3)

SERVICES, GROUPS, CLUBS, AND SOCIETIES

SERVICES

Cheer (Concern and Help for East Elmbridge Retired)	Harry Livesey	01372 879321
Dittons & Weston Green NeighbourCare	Frankie Bell	07790 472993
Elmbridge Borough Council Community Support Services		
Thames Ditton Centre for Retired People	Mon & Thurs	020 8398 5921
Thames Ditton Children's Centre	Tues, Weds, Fri	020 8398 3772
Meals on Wheels, Community Transport, Dial-a-Ride,	ask for service at central	
Alarm & Telecare services, Relief Carers	switchboard	01372 474474
Homesupport Elmbridge	Pam Howard (Manager)	01932 267128
Esher and District Stroke Club	Ann Pollock	020 8398 6132
Voluntary Action Elmbridge	Sally Dubery	01372 46358
Surrey Youth and Adult Education Service	Elmbridge Area	020 8979 8334

GROUPS

Girl Guiding in TD & WG	Mrs K Williams	020 8398 1300
1st Thames Ditton Brownies	Mrs. Bronach Hughes	020 8398 1628
3rd Thames Ditton Brownies	Deborah Daoud	020 8398 5521
2nd Thames Ditton Rainbows	Alexandra Lyall	07779 616463
1st Weston Green (All Saints) Scout Group	Carole Needham	07975 842423
1st Weston Green Guides (All Saints)	Mrs. Louise Lewis	020 8398 4843
2nd Thames Ditton Guides	Mrs. Bronach Hughes	020 8398 1628
1st Weston Green Brownies (All Saints)	Mrs K Williams	020 8398 1300
2nd Weston Green Brownies	Mrs J Epps	020 8395 0595
1st Weston Green Rainbows	Mrs Helen Hill	020 8398 3135
4th Thames Ditton Ajax Sea Scouts	Alison Derrick	020 8398 0041
Dittons Scout Group	Laura Clarke	020 8398 3447
Coffee and chat (United Reformed Church)	Mrs. E. Barker	01372 467491
Emberbrook Trefoil Guild	Mrs. Adrienne Nealing	020 8398 5582
Friends of Bushey and Home Parks	Jean Smith	020 8977 9391
Friends of Walsingham Care	Miss Valerie Chicken	020 8398 2932
Molesey and Dittons Neighbourhood Watch	Chairman: John Haberfield	020 8398 5256
Parents and Toddlers(St Nicholas church)	Information	020 8398 7211
Ripieno Choir	Nick Harris	020 8399 7231
Surrey Bell-ringers	Nick Pattenden	Nick.Pattenden@cassiopae.com

CLUBS

Albany Motor Yacht Club	Secretary	01784 466651
Arts and Heritage Club	Carol Butcher	01932 867511
Claremont PROBUS Club	Mr. P. Collins	020 8398 3125
Claygate Bridge Club	Hon. Secretary	020 8398 1710
Colets Health & Fitness	Giordano Orsini	020 8398 7108
Dittons Skiff and Punting Club	Hon Secretary	07710 139417
Dittons & Hinchley Wood Royal British Legion	Hon Secretary	020 8398 6263
Ember Players (Drama) Ember Sports Club	Anne Segall	020 8941 4528

Ember Sports Club	Zenda Hedges	020 8398 7038
Ember Sports Club: Bowls	Sylvia Jones	01932 788701
Ember Sports Club: Croquet	Dr. David Cooke	01932 862841
Ember Sports Club: Tennis	Annabel Duncan	020 8786 6318
Esher Bowling Club	Roger Cooper	01372 468109
Esher Bridge Centre	Paul Whicker	01372 460157
Esher Camera Club	Billy Buchanan	020 8398 3169
Esher 41 and Ex-Round Tablers' Club	Dr. R. Tudor-Williams	020 8398 0108
Folk Dance Club	Pam Phillips	01372 373745
Hinchley Wood / Dittons PROBUS Club	Geoff Francis	01932 867771
Long Ditton Cricket Club	Nigel Hardy	020 8398 8361
Long Ditton Garden Club	Heather Harvey	020 8398 2642
Model Railway Society (Hampton Court)	Secretary	01932 241224
Mothers Union (All Saints)	Jill Cotter	020 8398 4598
Old Cranleigham Rugby Club	Tony Price	07801 837129
Old Cranleigham Hockey Club	Simon Marshall (Men)	07801 737695
	Helen Hawes (Ladies)	07771 557900
River Club (BMYC)	David Walker	0870 460 3586
Rotary Club, Esher	Geoff Morris	01932 868454
Robber Bridge TD Lawn Tennis Club	Val	020 8399 9972
Surbiton Croquet Club	Alec Thomas	020 8398 2391
Surbiton Golf Club	Secretary	0208 398 3101
Surbiton Hockey Club	Secretary	020 8398 2401
Thames Ditton Lawn Tennis Club	Chris Lewis	07770 562569
Thames Ditton & Esher Golf Club	Mark Rodbard	020 8398 1551
Thames Ditton Squash Club (Colets)	Dave Peck	020 8398 7108
Thames Ditton Cricket Club	Howard Frish (Secretary)	07947 561449

SOCIETIES AND ASSOCIATIONS

Ember Choral Society	Linda Bridges	020 8399 5402
Esher Recorded Music Society	Miss S. M. Garrat	020 8398 8541
Esher and Molesey Garden Society	Chris Walker (Sec)	020 8398 6651
Esher and District Amnesty International	Cherry Eddy (Campaigns)	020 8398 4377
Hampton Court Way Allotment Association	Lettings: Piotr Hennig	020 8398 5358
Long Ditton Youth Club	Toni Izard	07749 633973
Lynwood Allotment Society	Gill Vickers	020 8398 4870
Molesey and District Antiques Society	Linda Lambert	020 8398 1476
NADFAS (Decorative & Fine Arts) Kingston	Mrs. Valerie Windsor	020 8549 9967
Soroptimist International (Kingston District)	Secretary: Pat Harman	020 8390 3507
Thames Ditton Women's Institute (W.I.)	Secretary	020 8398 8615

OTHER

Cancer Research UK	Mrs. Vivienne Harris	020 8398 6787
Elmbridge Fairtrade Network	Judy Porter	020 8398 6401
University of the Third Age (U3A)	Hon Sec Anne Brown	01932 881633
Vera Fletcher Hall	Lettings: Fiona Evers	08456 528 529
	Membership: Sue Morris	020 8224 0980

Please contact the Editor to amend these listings

THE THEATRE IN THAMES DITTON

AT THE VERA FLETCHER HALL

Friday 25 November 7.30pm

Film Night

SOME LIKE IT HOT

Considered to be one of the greatest film comedies, starring Marilyn Monroe, Tony Curtis and Jack Lemmon. TICKETS £6

CHILDREN'S THEATRE

Saturday 26 November 2.30pm

Image Musical Theatre presents

BEAUTY AND THE BEAST

Probably the most popular European fairy tale of all time. TICKETS £8 For ages 5+

Friday 9 December 7.30pm

Saturday 10 December 2.30 & 7.30pm

Sunday 11 December 11am & 4pm

CINDERELLA

Molesey Musical Theatre's first foray into the world of pantomime with this traditional version, with its much-loved characters. TICKETS £8-£14 (Tel. 020 8942 3255)

Saturday 7 January 7.30pm

Isosceles presents

BEHIND YOU!

Panto at Misery-on-Sea has not gone well. The happy image of panto gives way to the dark underbelly of showbiz. A comedy, but don't bring the children. TICKETS £12.50

Friday 13 January 7.30pm

Saturday 14 January 2.30 & 7.30pm

Charles Court Opera presents

PINOCCHIO

CCO's 10th Boutique panto, with their own imaginative take on a one of the most inventive fairytales. TICKETS £18

TICKETS: Online at: www.verafletcherhall.co.uk or Tel: **0845 680 1926**

or Send a SAE with a cheque (to *Vera Fletcher Hall Assoc.*) to:-
VFH Box Office, 8 Copsem Lane, Esher, Surrey KT10 9EU

For up-to-date news, visit our website above and sign up for our Newsletter.

To hire the hall, email/phone Amelia Crafts: hire@verafletcherhall.co.uk / 0845 652 8529

CHILDREN'S THEATRE

Saturday 21 January 2.30 pm

Noisy Oyster presents

HIGGLEDY PIGGLEDY PIE

When the king asks for a higgledy piggedly pie for his supper the royal chefs are thrown into a spin. TICKETS £8 For ages 5+

Saturday 28 January 7.30 pm

THE SOUND OF HIS MUSIC –

A tribute to Richard Rodgers

A musical revue celebrating his life and music. Expect some wonderful renditions of great musical theatre hits. TICKETS £14

Friday 3 February 7.30 pm

Film Night

THE MISFITS

Penned by Arthur Miller and directed by John Huston, this highly-regarded film was the final one for both Clark Gable and Marilyn Monroe. TICKETS £7, includes a complimentary drink

CHILDREN'S THEATRE

Saturday 4 February 2.30 pm

iDOLRich Theatre Rotto Productions presents **– FOREST FABLES**

An unravelling of ancient tales from Aesop that make sense of today's story – brought to life with puppets, music and your imagination. TICKETS £8 For ages 5+

Saturday 11 February 7.30 pm

The Kapsetaki Duo

Concert pianists, talented twins, Stephanie & Marianna Kapsetaki, play classical masterpieces for solo and four hands. TICKETS £15

Antique Clock Restoration & Repair

Specialising in Grandfather, Dial,
Bracket and Carriage Clocks

Contact: Mark Rowe M.B.H.I
BADA Diploma. Member of the Watch &
Clockmakers Guild. West Dean Diploma.



Tel: 020 8605 0331

www.theclockgallery.co.uk

Additional Restoration services available
for Watches, Books, Ceramics and Fine Furniture.

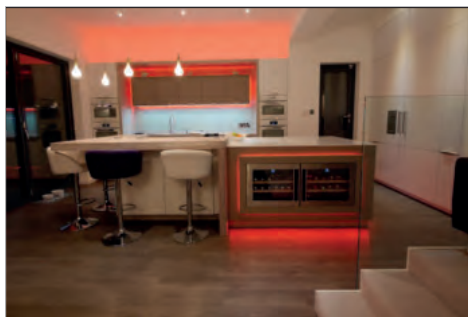
Antique Clocks also bought and sold.

Elaine@Esher

Holistic Nutritionist & Reiki

Arthritis, IBS & digestive disorders,
eczema, hormonal imbalances,
CFS/Fibromyalgia & autoimmune
conditions

Facebook: Elaine at Esher
0743 489 4668
else.davis@gmail.com
£80 per hour consultation



MOORE
By Design

PROFESSIONAL KITCHEN DESIGN

The Hersham Centre, Hersham

T: 01932 379076

New online gallery with 150 images...

www.moorebydesign.co.uk

Karen's Angels

The All Needs Carers



Karen's Angels is a friendly local care
company, operating in Surrey.

We provide professional 24 hour care, social
and personal care services.

We are very proud of the excellent reputation
we continue to achieve with our customers,
their families, local authorities, GP's and DN's.

For further information please contact

Karen/Andrea
02082247848
07760220604

ARIES CONSTRUCTION LLP

GENERAL BUILDING
EXTENSIONS & LOFT CONVERSIONS
FULL PLANNING & DRAWING SERVICES
ROOFING : PLUMBING : ELECTRICAL
BATHROOM & KITCHEN REFURBISHMENT
CARPENTRY & JOINERY
INTERNAL & EXTERNAL REDECORATION
REPLACEMENT WINDOWS & DOORS
INSURANCE CLAIMS : FIRE, FLOOD, STORM DAMAGE
SUBSIDENCE AND UNDERPINNING
PLASTERING & RENDERING
GROUNDWORKS & DRAINAGE
PROPERTY MAINTENANCE



13 Thames Court, Victoria Avenue
West Molesey, Surrey KT8 1TP



Free Estimates – Fast, Efficient, Friendly Service
Local References Available

Tel: 020 8941 9191
Mobile: 07836 608086
www.ariesconstruction.co.uk
Email: aries.construct@hotmail.co.uk