

# THAMES DITTON TODAY

The Magazine of the



Thames Ditton  
& Weston Green  
Residents' Association

## ❄️ Christmas Fair Sunday 29th November

Programme inside



WINTER 2015

[www.residents-association.com](http://www.residents-association.com)



**Weston Green**  
School



# K i n d e r g a r t e n



- Bug Hotel and Natural Area providing plenty of opportunities for outdoor learning
- Specialist teaching in Music, French and Games
- Extended days available

Call  
**020 8398 2778**  
to book a  
personalised  
tour

*Learning with joyful enthusiasm*

Tel: **020 8398 2778** | E-mail: [info@westongreenschool.org.uk](mailto:info@westongreenschool.org.uk) | [www.westongreenschool.org.uk](http://www.westongreenschool.org.uk)

Weston Green Road, Thames Ditton, KT7 0JN

The Magazine of the



Thames Ditton  
& Weston Green  
Residents' Association

# THAMES DITTON TODAY

Published quarterly since 1970

## Editorial Team

Libby MacIntyre & Sandra Dennis  
editor@residents-association.com

## Magazine Design

Guy Holman  
24 Angel Road,  
Thames Ditton  
020 8398 1770

## Distribution Manager

David Youd  
6 Riversdale Road,  
Thames Ditton KT7 0QL  
020 8398 3216

## Advertisement Manager

Verity Park  
20 Portsmouth Avenue,  
Thames Ditton KT7 0RT  
020 8398 5926

## Contributors

You are welcome to submit articles or images. Please contact the Editorial Team well in advance of the next deadline February 8.

## Advertisers

Thames Ditton Today is delivered to an influential 4000 households throughout Thames Ditton and Weston Green. Contact Verity Park for rates for full page, half and quarter page advertising.

## In this Winter 2015 issue:

News from the Residents' Association .....	7
Weston Green .....	17
See it, report it – keeping our councils on their toes .....	19
Stepping out Thames Ditton style .....	21
Christmas Fair Programme (pull out guide) .....	23
Christmas is coming – join in .....	27
The League of Friends of Thames Ditton Hospital .....	33
A brief history of Church Walk.....	37
Solution to Autumn Crossword.....	42
Winter Crossword .....	43
Services, Groups, Clubs and Societies .....	44
Ember Big Band .....	46

Cover illustration: *Thesetupdesign.com*,  
*Thames Ditton High Street*

[www.residents-association.com](http://www.residents-association.com)

Officers and staff of the Association are volunteers, but we must fund costs of this magazine, administrative and election expenses, and other expenses such as spring bulb-planting and the village Christmas tree. The subscription is only £3 per household. If you can contribute more, please do so. Subscriptions can be paid via our website [www.residents-association.com](http://www.residents-association.com). Subscriptions (in an envelope please) may be left at Boots Pharmacy, 14 High Street, Thames Ditton or Thorkill Road Pharmacy, 94 Thorkill Road, Thames Ditton. Or mail to Membership Secretary Peter Haynes at 6 Onslow Gardens, Thames Ditton KT7 0JJ. Thank you.



autumn  
*MOVES?*

Speak to the property experts

**Hawes & Co**  
Established 1885

Thames Ditton Residential Sales & Lettings 020 8398 2500

[www.hawesandco.co.uk](http://www.hawesandco.co.uk)

Offices also at: SURBITON, THAMES DITTON, RAYNES PARK, WIMBLEDON BROADWAY & WIMBLEDON VILLAGE



# RESIDENTS' ASSOCIATION

## About the Association

Founded in 1934 our Association is a strong, locally based non-party-political organisation concerned with protecting the amenities and furthering the interests of the inhabitants of Thames Ditton and Weston Green. We work to preserve and enhance the best in our attractive environment and the quality of life of everyone in our community.

Through regular meetings, social activities, our magazine and website we keep in touch with residents' views and we raise and spend funds for the benefit of the community, from tree and bulb planting to contesting unacceptable development projects.

With five Residents' Councillors we have a strong voice on Elmbridge Council working with other residents' councillors to ensure that decisions are based on the needs of local communities and on good management rather than on party politics.

Our Residents' County Councillor Peter Hickman represents our views at Surrey County Council.

**President:** Maureen Sheldrick,  
34 The Woodlands, Esher

**Surrey County Councillor:**  
Peter Hickman, Little Lodge,  
Watts Road, Thames Ditton 020 8339 0931

## Thames Ditton Councillors

Tricia Bland,  
29 Station Road, Thames Ditton 020 8339 0485

Ruth Lyon,  
11 Riversdale Road, Thames Ditton 020 8398 3396

Karen Randolph,  
Deepfield, Giggs Hill Road,  
Thames Ditton 020 8398 5005

## Weston Green Councillors

Ruth Bruce,  
15 Imber Grove, Esher 020 8398 8324

Tannia Shipley, Clinton House,  
27 Lower Green Road, Esher 020 8398 2484

## Officers

Chairman: Rhodri Richards,  
Ditton Cottage, Giggs Hill Road,  
Thames Ditton 020 8224 5181

Vice-Chairman: Libby MacIntyre,  
24 High Street, Thames Ditton 020 8398 5534

Hon. Treasurer: Christa Silverthorne,  
62 Thorckhill Road, Thames Ditton 020 8398 7101

Hon. Secretary: Florian Traub,  
85 Longmead Road, Thames Ditton 020 8224 2880

Membership Secretary: Peter Haynes,  
6 Onslow Gardens, Thames Ditton 020 8398 6019

## Conveners of Sub-Committees

Health and Community:  
Karen Randolph (see above)

Planning: Graham Cooke,  
23 Ashley Road, Thames Ditton 020 8398 8509

Highways, Drainage: Andrew Roberts,  
1 Boyle Farm Road, Thames Ditton 020 8786 6882



## The Next Residents' Association Open Meetings are

Tuesday 10 November and Tuesday 26 January at 8.00 pm,  
Vera Fletcher Hall, Thames Ditton

All who live or work in Thames Ditton and Weston Green are welcome



# WE'RE CHANGING

...WITH A HUGE  
INVESTMENT!

By reinvesting our profits back into the club we've got some great changes coming up.

- NEW Group Cycle Studio
- NEW Changing Rooms
- NEW Functional Training Studio
- NEW Conservatory & Outdoor Area

**COME AND SEE US TO FIND OUT MORE.**

## CALL NOW TO BOOK YOUR FREE TRIAL\*



# 020 8398 7108

St Nicholas Road • Thames Ditton • KT7 0PW

  
**COLETS**  
HEALTH & FITNESS  
[www.coletshealthclub.co.uk](http://www.coletshealthclub.co.uk)

\*Terms and conditions apply.

# News from the Residents Association to end October



## Massive response objecting to Boundary Commission plan to carve up Thames Ditton

The Local Government Boundary Commission says it has received a record number of objections to its proposals to carve up Thames Ditton ward by forcing 920 Thames Ditton residents who have always been part of the Thames Ditton community to join Long Ditton ward. The roads concerned were all of the roads east of the Portsmouth Road between Thorkhill Road and Claygate Lane. A total of 201 letters of objection were sent to the Boundary Commission.

Your Residents' Association joined Hinchley Wood Residents' Association in not just objecting to this proposal – and the simultaneous proposal to merge Hinchley Wood and Weston Green wards - but clearly setting out an alternative plan which would meet the Boundary Commission's three criteria of electoral equality, reflecting community identities and interests and providing for effective and convenient local government.

If our objections and proposals are accepted we would still have three Councillors in Thames Ditton ward, with two each in Hinchley Wood, Long Ditton and Weston Green wards. We trust the Boundary Commission will listen to local people's concerns when their final recommendations are published on December 1.



*Travellers on the commons last summer*

## Preventative measures under way to protect our commons

Following the significant number of unauthorised traveller camps over the summer, Elmbridge Borough Council (EBC) has taken a more proactive view towards strengthening the security of the Borough's green spaces. Several measures were considered and these were discussed with the relevant Ward Councillors. A series of physical improvements have been agreed to help protect vulnerable areas and care has been taken to be sympathetic to the specific site and location.

Residents will remember that there were several incursions in the Thames Ditton and Weston Green areas last year. These have been prioritised for security measures and work has already commenced in the Weston Green Conservation Area.

The planned work was outlined in an article by Councillor Tannia Shipley in the summer edition of Thames Ditton

Today. Ditching and banking (digging a trench with the spoil being used to form a bank) is considered to be one of the most secure measures. It was pointed out that the area would look unsightly at first but, given time, the area would become attractive again. The initial trenching is indeed perhaps unsightly and it is now necessary to leave the spoil to settle before the final landscaping takes place. The banking height will then be reduced and rounded off. The area will be re-seeded and should then green up and blend in with the surroundings once more.

Some residents have commented on gaps in the ditching. This is to allow passage across to the common. In some cases the gaps have had to be quite wide as there are services beneath that need to be protected. The wider gaps (those large enough to allow vehicles to pass through) will have wooden posts put at either end.

It will not be necessary to ‘ditch and bank’ the whole area as other measures will be used where appropriate eg. wooden posts.

Some of the area will not need any work at all as it is already protected by double-kerbing or there may be existing trees that prevent access.

## **Grass cutting of open spaces**

Concerns have been widely expressed about the new Grounds Maintenance Contract which EBC awarded to The Landscape Group (TLG). In particular, the standard of maintenance of open spaces, such as Weston Green and Gigs Hill Green, has attracted a high number of complaints. Officers at EBC are working hard to improve the situation.

## **Milbourne Pond**

We continue to explore the best way to return Milbourne Pond to... well, a pond. The borehole installed last year proved there was water of good quality available that could be used to top up the pond if it could be re-established. We have had advice from the environmental consultancy that it may be possible to re-profile the pond to bring it below the level of the water table and re-establish its ‘dew pond’ status without needing to use a liner. To do this an accurate measure of the pond water table is needed and will be obtained via digging three trial pits around the pond to monitor the water levels over a period of six to eight months.

A trial pit is similar to a bore hole with a secure lid. Once the data regarding water levels is available a decision can be made about how best to proceed.

In the meantime on October 25 local residents and Ward Councillors joined in a ‘Community Clearance day’ arranged by Peter Dodge, to whom many thanks, to clear the scrub around the pond.



*Clearing scrub around Milbourne Pond*

## **Imber Court Sports Club.**

We are delighted to report that, after a seven year legal battle with the Metropolitan Police, the Chairman and Committee at Imber Court have secured a 35-year lease on the Club and its grounds.





*Inaugural Thames Ditton Farmers' Market*

The Club is now a limited company, the lease having been signed on August 26 2015. This is good news as this is Green Belt land and it prevents anyone trying to change its use.

The Club is now planning for the future. There are already plans approved for a new nursery and it is hoped that the tennis facilities will be improved with outside investment. Local residents are encouraged to take up membership and use the wonderful facilities: the bar, the gym, the pool and the grounds. For information regarding membership please contact the Club on 0208 398 1267.

## **Inaugural Farmers' Market in Thames Ditton**

Sunday October 25 saw around 1,200 people attend the inaugural Farmers' Market in the car park of the George and Dragon pub in Thames Ditton. It was a great community day out with families shopping at a wide range of stalls and

stopping to chat with neighbours and meet new people.

The Farmers' Market was put together by a small team of volunteers who put in a huge amount of time and effort to make it happen. As well as a great community event it aims to support shops and businesses in the High Street by encouraging people to look to the village for their shopping needs.

Future farmers' markets are planned for the fourth Saturday of every month, except December. The next date for your diary is Saturday November 28.

In the meantime your local High Street retailers have plenty to offer and shopping there has been made even easier with the implementation of the long-awaited short term parking.

There are now 13 short-term parking bays (plus two disabled parking bays) in front of the shops allowing parking for up to one hour, with no return for an hour.

These plus the Ashley Road car park and its short-cut Pip's Path walkway through to

## **PAINTERS & DECORATORS**

We are residential painters and decorators with 20 years experience, we offer wallpapering, painting and paint effects for internal and external decorating

We work in a clean and efficient manner, causing minimal disruption in your home and come highly recommended



Painters and Decorators

Contact Clive Hogg  
to discuss your  
decorating needs

**020 8339 0712**

m: 07957 582296

e: [clive.hogg@virgin.net](mailto:clive.hogg@virgin.net)

15 Hampton Court Avenue, East Molesey, Surrey, KT8 0BG

## **SCIENCE TUITION**

### **A Level & GCSE Tuition**

**Biology, Chemistry  
& Physics**

**Tel: 020 8398 7365**

**Alan Tucker:  
2 Gainsborough Close,  
Esher KT10 8JR**

**[alan@asbtucker.co.uk](mailto:alan@asbtucker.co.uk)  
Enhanced CRB**

## **MICHAEL MOULE ANTIQUES**

### ***CONSTANTLY REQUIRE THE FOLLOWING ITEMS***

All Furniture Pre 1920, Silver and Silver Plate,  
Brass and Copper, All Clocks, Porcelain, Bronze  
and Marble Statues, All Paintings, Gold Jewellery,  
Old Dolls, Books, Pewter, Swords, Curios.

### **ANYTHING OLD AND UNUSUAL**

For a fast and friendly service do not hesitate to  
telephone any time, with absolutely no obligation.

### **IMMEDIATE CASH SETTLEMENT**

**020 8398 8072**

**26 Basing Way, Thames Ditton**

the shops should encourage everyone to shop in the village and support our local retailers.

## Thames Ditton Centre

Elmbridge's Mayor, Councillor Mrs Jan Fuller, supported by the Deputy Mayor, our own RA Councillor Mrs Tannia Shipley, officiated at the Thames Ditton Centre Open Day on September 21. The Mayor opened the new 'Men in Sheds' workshop and a new Games/Therapy room was also opened. It's available for bridge sessions, art classes and many more.

The Thames Ditton Centre for the Community is open Monday and Thursday 9-4.30pm and is in Mercer Close, opposite the library. It aims to promote an active and full life for residents over 50 with a range of leisure activities and opportunities for learning new skills and seeking information and advice.

## Theft of red pavement tiles

Surrey County Council (SCC) has been able to replace some of the historic red pavement tiles stolen in Weston Green. Please be vigilant, if you see or hear 'workmen' removing tiles, day or night, try not to disturb them and telephone 999.

## Planning

The Planning Inspector upheld the appeal on Taggs **Boatyard** (2014/1600) and permission has been granted for eight residential units. The inspector found that the reasons EBC gave for refusal were valid and therefore costs were not awarded against the council; however his overall decision was to permit. The ruling was a disappointment to those who had objected to the development; however the Inspector was clear that he thought the

decision to permit was the best way of protecting the boatyard. We must now be vigilant to ensure it is not threatened by further developments.



*Historic Wells Cottage*

An application to demolish **Wells Cottage, 35 Ashley Road** (2015/2975) and build a detached two-storey house has been withdrawn. A total of 50 letters of objection were received including one from the local Conservation Officer. She stated that Wells Cottage qualified as a Significant Unlisted Building and, as such, should be protected from inappropriate forms of development or unjustified demolition. Also that 'there appears to be no reason why this characterful building could not be sensitively restored as a family home'.

The RA is working with SCC (which has taken ownership of the land in front of 55b and Maud in the High Street) to restore the public landscaping in front of the buildings.

An application for **Angel Road Storage Units** (2015/0598) attracted more than 100 objections and was unanimously refused at the East Area Planning sub-committee.

A previous application for back-land development at **87/89 Grove Way** went

## A friendly, local and professional service

- Mortgages
- Equity Release
- Pensions
- Investments
- Personal Insurance
- Commercial Insurance

[www.knightjames.com](http://www.knightjames.com)

[www.pension-review.com](http://www.pension-review.com)

**(t) 0208 398 6677**

## knightjames

Independent Financial Advice

Concerned about the performance of your Personal Pension or Stocks & Shares ISA?

Ask about our **FREE** pension and fund review



6 Station Road, Thames Ditton, Surrey KT7 0NR

If you're having an outdoor event call us & let us put you.....

# Undercover Event Tents

We specialise in offering a wide range of marquee solutions to suit any social or commercial event in south east london & surrey

Phone: 0208 398 7219

Mobile: 07864 585 181

email: [undercover.events@yahoo.co.uk](mailto:undercover.events@yahoo.co.uk)

web: [undercovereventtents.co.uk](http://undercovereventtents.co.uk)



to appeal and was dismissed. Another application for two pairs of semi-detached houses with a room in the roof and dormer windows is going through the system at present (2015/3368).

There is an application for a pair of semi-detached houses with access via Ember Gardens **on land to the rear of 47/49 Embercourt Road** (2015/3507).

**Weston Green School** (2015/3070) has submitted an application for a detached single-storey block of five classrooms and to allow an increase in the number of children attending the school from 180 to 256.

A planning application has been submitted for change of use of the **Cricketers Pub, Weston Green** (2015/3458) to a pair of semi-detached houses.

An outline application has been submitted for the development of a new garden village between **Molesey Road (Hersham) and River Mole** (2015/1096). This was withdrawn just before it was due to be considered at the North Area Planning sub-committee on October 20.

## **Draft Flood Risk Supplementary Plan**

Your Residents' Association has sent a detailed response to EBC's Draft Flood Risk Supplementary Plan. The plan is intended to ensure that flood risk to and from new development is fully taken into account in planning decisions.

## **Winter flowers, spring bulbs and a Christmas tree**

A special thank you to Francine Brooks for planting the winter pansies in the fountain at the Boyle Farm roundabout in Thames Ditton; and to

Andrew James for watering the flowers throughout the year.

This autumn John Lyon planted several hundred more spring bulbs all over Thames Ditton and Weston Green. This is the 25th year that the Residents' Association has funded these bulbs. The results will be seen next spring – not only the ones that have been planted this year but those that are spreading naturally. In the meantime the Association's Highways Convenor Andrew Roberts has arranged the Christmas tree and lights for the Fountain roundabout

## **Remembrance Sunday**

On Remembrance Sunday, November 8, following a service at St. Nicholas Church, Rhodri Richards, RA Chairman, laid a wreath on behalf of the RA at the war memorial on Giggs Hill Green. Councillor Ruth Lyon laid a wreath on behalf of Elmbridge Borough Council.

Councillors Tannia Shipley (for Elmbridge) and Ruth Bruce (for the Residents' Association) laid wreaths at the war memorial at Weston Green.

## **Are you a secret gardener?**

We have had a couple of suggestions for gardens to feature in next year's Secret Gardens of Thames Ditton. Do you have or know of a garden that can be included? If so please contact [editor@residents-association.com](mailto:editor@residents-association.com)

## **Weston Green... quiz hats on**

Nothing gets a community buzzing like a bit of friendly competition and Saturday January 16 2016 will see the inaugural 'Weston Green Community Quiz.' Details on the RA website nearer the time. For further information phone 0208 398 7660 or e-mail [westongreenquiz@gmail.com](mailto:westongreenquiz@gmail.com)

H J C

Finding self enlightenment  
can be a very rewarding  
experience



Rewarding experiences are what our  
customers have come to expect.

If you're thinking of letting or selling your home, please contact us on

**Surbiton Sales:**  
020 8390 0404

**Thames Ditton Sales:**  
020 8398 3707

**Lettings:**  
020 8390 9290

[www.hjc.co.uk](http://www.hjc.co.uk)

## Errata

*We would like to apologise for an incorrect impression given in the article about Giggs Hill Surgery in the last issue. Karen Randolph had been led to believe that Dr. David Matthews' departure from the surgery was sudden and unexpected. This, regrettably, was incorrect; yet it was the clear impression given by the surgery itself and by a number of other sources, including several different patients who were under the same misapprehension. We would like to emphasise that Dr. Matthews' departure followed a period of notice, which in turn followed his resignation. The management of the combined practice had however, decided that Dr. Matthews' resignation was not to be public knowledge and, as a result, even staff at the combined practice were equally unaware of his resignation. While many patients have been upset by his departure from Giggs Hill Surgery he has not retired from practise and is currently working at Lantern Surgery in Hinchley Wood.*

## Dates for your diary

### Farmers' Market

Saturday November 28

George and Dragon car park 9-1pm

### Christmas Fair

in the High Street

Sunday November 29 3-6 pm.

### Carols and fun

#### on Weston Green Common

Saturday December 5

### Weston Green Community Quiz

Saturday January 16

### Charles Court Opera – Mirror Mirror

(a Snow White pantomime)

at the Vera Fletcher Hall

January 15, 16

[Residents-Association.com](http://Residents-Association.com)

Hand crafted silver and gold  
by an acclaimed master silversmith

Stunning bespoke gold,  
silverware and jewellery, by  
acclaimed master silversmith  
Bernard Leon.

Peerless, exquisite hand crafted  
finery, individually created on the  
premises and totally unique.

**ASSIMI**

54 High Street, Thames Ditton  
Telephone: 020 8972 9500

# LEATHER TRAVEL BAGS & LEATHER BRIEFCASES



[www.theleathertravelbag.co.uk](http://www.theleathertravelbag.co.uk)

[www.theleatherbriefcase.co.uk](http://www.theleatherbriefcase.co.uk)

[www.oldangler.co.uk](http://www.oldangler.co.uk) (our Italian factory)

These specialist websites offer a wide choice of top quality leather business cases, travel bags and luggage.

Very prompt deliveries are made from our UK stock or direct from our factory in Florence.

**SURREY OFFICE ADVICE LINE 0208 404 6451**  
**[sales@thebags.co.uk](mailto:sales@thebags.co.uk)**



# Join in a welcome to Christmas at Weston Green



On Saturday 5 December residents are invited to join in a Lantern Parade and see the switch on of community Christmas lights for the first time in Weston Green. The Residents' Association has arranged for Christmas lights to illuminate a tree by Milbourne Pond and the switch on will be the culmination of a fabulous community day to kick off the Christmas season in Weston Green.

The fun starts at 2.00 pm with the perfect family event to kick off the Christmas season – a screening of Disney's sing-a-long version of the favourite movie 'Frozen' on the big screen in All Saints Church, Chestnut Avenue, Weston Green., This is the ideal opportunity for the whole family to join in the fun. Tickets include a 'Frozen' cookie & hot tea, coffee or soft drink in the interval and extra teatime treats will be available to buy.

Only 150 tickets are available so book now from the church office or send an s.a.e. to Joy Tilbury, 34 Belgrave Close, Walton on Thames, Surrey KT12 5PH

Email [joyetilbury@gmail.com](mailto:joyetilbury@gmail.com)

Cheques made out to PCC All Saints Weston Green. Adults £6. Under 10s £4

At 5pm everyone (filmgoer or not) is invited to meet in the front of All Saints church for hot food, roasted chestnuts,



*Homemade lanterns on parade*

festive drinks and stalls selling local produce; the Thames Valley Morris Men will be there to make things go with a swing.

A Lantern Parade will then file across to Milbourne Pond for carols (carol sheets provided) and the lights will be switched on at 6.45. Everyone is invited to bring along their own homemade (or bought) lantern to light up the evening. There are plenty of tips and ideas on YouTube if you are going to make your own.

## **Saturday 5 December – festive timetable**

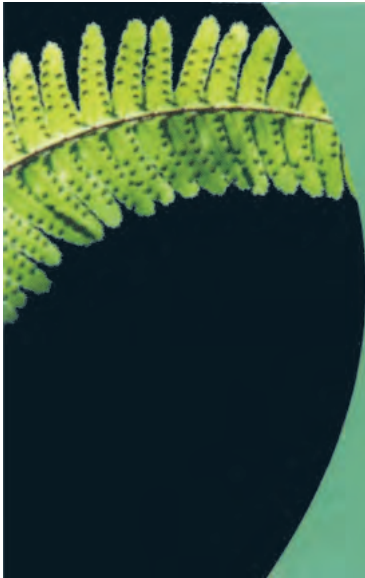
2.00 – 4.30 pm Screening of Disney's Sing-a-long version of 'Frozen'

5.00 – 6.45 pm Community Fair & Lantern Parade

6.45 – 7.15 pm Switch on lights and carols



*Fingers crossed the weather will be kind – if it is truly horrendous the action may be moved to the church and the switch on take place at the first opportunity.*



## **M.P.B. Landscapes**

All aspects of work undertaken:  
hard and soft landscaping, patios,  
fencing, decking, brickwork, turfing.

### **Mark Blunden**

Landscaping since 1993  
fully qualified, Merrist Wood trained

Tel: 020 8398 3509

Mobile: 07957 281 748

E-mail: [markblunden@yahoo.co.uk](mailto:markblunden@yahoo.co.uk)

## **DOWN TO EARTH**



**27 Church Walk  
Thames Ditton  
Surrey  
KT7 ONP**

Phone: 020-8398-7219

Mobile: 07867-590-450

E-mail: [downtoearth2008@live.co.uk](mailto:downtoearth2008@live.co.uk)

*A family run, local gardening service*

## **GARDEN MAINTENANCE, CLEARANCE & DESIGN AT AFFORDABLE RATES**

Gardens can get out of hand very quickly, sometimes  
it can be hard to keep on top of it all year round.

We can provide total garden clearances', regular gar-  
den maintenance, garden design, fencing & paving, to  
help create.....(and keep) the garden you've always  
wanted.

Why not give us a call or drop us an e-mail to see  
what we can do for you?

# See it, report it – keeping our councils on their toes



How often have you walked past a sight like those below, muttering “That’s terrible!”, then seen it unchanged a few days later and said “The council should clear that up!” Well, they will... once they know about it.



*It doesn't have to be like this*

More and more these days Elmbridge Borough Council and Surrey County Council rely on residents to report issues that need cleaning up or fixing in our roads and green spaces. Whether it’s to do with litter, overflowing bins, blocked drains or overgrown vegetation etc. a problem that is brought to a council’s attention will be dealt with much quicker than if left to routine maintenance. But it does require a little time and effort by residents.

Both councils have comprehensive websites on which we can report problems, either directly online or by telephone using the details they provide. Once reported, many problems are fixed

within a day or two. But if action isn’t speedy enough, you are given a reference number which you can use to chase them up and find out why.

For some issues it can take a bit of searching on the councils’ websites to find the appropriate page for your report, so to make it easier the Residents’ Association has compiled a single webpage with links to the councils’ reporting pages for the most common issues. Go to our home page, [www.residents-association.com](http://www.residents-association.com), and click on ‘Report it to the Council’.

Besides getting a problem dealt with quickly, reporting problem issues has other benefits. If it’s a recurring problem, particularly to do with litter, the council can amend its maintenance schedule to, say, clean up that stretch of road or empty a particular bin more frequently.

Also, reporting issues helps councils monitor the work of their contractors. Issues that stem from a poor standard of work will be dealt with by the councils, both in the short term (financial penalties) and when judging contract renewals.

So, as with any consumer product, if it’s not right, don’t just moan and suffer it – make sure it’s fixed. In other words – See it, Report it... Sorted!

**Peter Haynes**

# FUNERAL DIRECTORS AND MEMORIAL STONEMASONS



## THE FAMILY YOU CAN TURN TO...

Seven generations of our family have been helping and advising local families in their time of need. For over 230 years we have been providing funerals, both modest and traditional, with care and compassion.

<b>ESHER:</b>	78 High Street	01372 463903
<b>EAST MOLESEY:</b>	156 Walton Road	020 8941 1412
<b>THAMES DITTON:</b>	37 High Street	020 8398 4586

**Lodge**  
BROTHERS 1780  
*the family you can turn to*

[www.lodgebrothers.co.uk](http://www.lodgebrothers.co.uk)



**FPA**  
FINANCIAL  
PLANNING  
REGULATORY  
AUTHORITY

ASK ABOUT OUR  
PRE-PAYMENT  
FUNERAL PLANS

Custodian Trustee: HSBC Trust Co. (UK) Ltd.



**WESTON GREEN**

**020 8398 6027**

24 Hour Answerphone

## Orthodontics for Children & Adults

Jane Eden BDS(Lon), MSc(Lon), MOrth, RCS(Eng)

Fraser McDonald BDS(Lon), MSc(Lon), PhD, MOrth, RCS(Eng)

- Gentle and Caring Environment
  - Private and NHS Practices
  - Evening and Saturday Appointments
- Available Privately

**PRIVATE and  
NHS Practices:**  
Yewhurst  
Weston Green  
Thames Ditton  
Surrey  
KT7 0JZ

**NHS Practice:**  
Oak Lane  
Twickenham  
TW1 3PH



[www.weston-green-orthodontics.co.uk](http://www.weston-green-orthodontics.co.uk) E-mail: [wgop@jeden.freemove.co.uk](mailto:wgop@jeden.freemove.co.uk)

# Stepping out – Thames Ditton style



There's something afoot in the United Reformed Church hall in Speer Road. Commuters walking past have reported strange tapping noises emanating from the building on Wednesday evenings. Paranormal activity was even suggested, but these mysterious sounds are invariably accompanied by music and frequent bursts of female laughter, so locals can rest assured that it is



*The Zimmer Sisters – Andrea, Lesley, Pat, Tricia, Cathy & Chrissy*

nothing more alarming than a group of ladies at their weekly tap dancing class.

As one of the troupers, I'm proud to report that we've been tapping away since early 2013. We've mastered cramp rolls, paradiddles, riffs, Maxie Fords, Suzie Q's and more. Never once entertaining delusions of being the next Ginger Rogers or joining the Riverdance line-up, we just fancied the challenge of learning something different.

Of course the learning curve gets harder to climb as we ladies mature and, to start with, even the simplest of steps seemed impossible to master. But we were determined; we stuck at it and truly, if we can do it, anyone can. Once the pennies drop, tap dancing is one of the best activities - combining great music, mental stimulation, co-ordination, aerobic exercise and best of all, fun and laughter.

Now, performing in the privacy of the church hall is one thing, but our lovely

teacher had greater aspirations for us. How would we like to take our Caro Emerald routine to the stage before an audience of 200 at the dance school's 2014 Christmas concert?

Predictably, our first reaction was "you cannot be serious"... but everyone needs goals and so we did it – not just once, but two evening performances and a matinee. Although it's one of the most terrifying things that we have ever done, it was an exhilarating experience. Dubbed The Zimmer Sisters and decked out as flapper girls, we conquered our nerves (just), stepped way out of our comfort zone (literally) and performed to rapturous applause. Would we do it again – you bet, we're hooked!

If anyone is interested in tap please contact the head of Molesey School of Ballet, Jennifer Sibbald, 07818 293999, e-mail [jenniferpasdechat@msn.com](mailto:jenniferpasdechat@msn.com)

**Lesley Haynes**

# TJBathrooms

**FOR EVERYTHING IN  
LUXURY BATHROOMS  
& SHOWERS**



**Open: Mon to Fri 8am-5pm Sat 9.30am-3pm**

**121 ANYARDS ROAD, COBHAM, SURREY, KT11 2LJ** (Car park to rear of building)

**Tel: 01932 866471 / 868523**

**tjbathrooms@ntlbusiness.com • www.tjbathrooms.co.uk**

**FREE DESIGN & PLANNING SERVICE**

**Also at: 122 SUMMER ROAD THAMES DITTON, SURREY KT7 0QP 020 8398 4324**



Virtual  
WORLD



**Sunday 29th November 3-6pm**

**Thames Ditton High Street**

**Winter Wonderland**



# **Christmas Fair**

## **Programme**

**Supported by**

**THAMES  
DITTON  
TODAY**

The Magazine of our  
Residents' Association



**❄ pull-out guide ❄**

## All the Fun of the Christmas 2015 Fair!

**No30 Antiques** Looking fabulously festive in a vintage way, find Cancer Research UK Christmas cards.

**Aldous Craig** Receive a warm welcome and delicious mulled wine with proceeds to local charities.

**Angela Kane** Follow the buzz to the Kingston Bee Keepers.

**Angelina Colarusso** See the most spectacular Winter Wonderland window in the land.

**Assimi and Hype** Pop by for a sparkling glass of Prosecco with proceeds to charity.

**Biscuit and Paws** Find fabulous feline and canine gift bags for your favourite pets.

**Bradley + Brown** Find festive cheer and gifts.

**George & Dragon** Roll up for the G&D's famous festive BBQ and special recipe mulled wine. Plus entertainment from Kingston Morris Dancers/Musicians.

**Hawes & Co** Go up, up and away with the Balloon Race game, all proceeds to charity.

**Ironing Board** Children can discover Santa in Sheila's crystal grotto with fairies and elves and collect an early Christmas gift.

**K&D Barbers** A treat not to be missed, K&D are offering HALF PRICE haircuts from 3-6pm!

**La Clinique** Pamper yourself with 30% off treatment vouchers bought at the Fair plus enjoy a delicious curry.

**The Lime Tree** Find beautiful handmade Christmas cakes and panettone for sale or to order.

**Lunch** Don't miss Jennifer's fab festive spread of sausage rolls, cakes and refreshments.

**Nice Buns Café** Becomes the Polar Bear Café – find piping hot sausages on sticks, mince pies, winter white rocky road, lashings of hot chocolate plus heaps more!

**Maud** A must for luxury gifts plus a 'wish list' service to ensure the special people in your life get what they really, really want. Once again Maud is supporting the Royal Marsden.

**Osteria di Mucca Felice** Celebrate la dolce vita with champagne, cocktails and hot dogs.

**Paull's** Once again, find delicious, traditional roast chestnuts.

**Red Lion** The team will be smoking hot with sausages and mulled wine. Plus play the game: catch the present down the chimney in aid of IYAF (Int Youth Art Festival).

**The Rose** The place for delicious lamb and vegetable samosas; vegetable pakora, chicken wings and nan. Yum!

**The Secret Garden** Discover beautiful Xmas wreaths, festive floral arrangements, table and tree decorations.

**The Stitchery** Be dazzled by a spectacular selection of gifts, plus, spend £80 on Fair day and receive a delicious £10 box of chocolates absolutely FREE!

**View Gallery** Featuring a specially commissioned AC Cobra by award winning artist Jacqui Shipp and an innovative pop art collection by Gavin Mitchell. Mulled wine with proceeds to PAH.



## Raffle: Over 15 fabulous prizes to be won!

Don't forget to purchase your Christmas Fair Raffle Tickets and get your chance to win an absolutely fabulous prize! Available from early November – look out for posters in participating High Street shops. Proceeds to **Keep the Heart in our High Street Campaign** supporting our local shops and businesses and the **High Street Christmas Lights Appeal**.



# That's Entertainment – Winter Wonderland Style!

## All lit up!

This year at the Fair our beautiful High Street **Christmas tree lights** are being 'switched on' by **Kit Symons, Manager of Fulham Football Club** who's lived with his wife and family in the village for 17 years. Make your way to the lime tree for **4.30pm** when Kit will flick the switch to set in motion the lighting up of our High Street for the entire festive season.

We are delighted to welcome the **Ice King and Ice Queen** stilt walkers who will be spreading their magical festive goodwill throughout the duration of the Fair. Both will be thrilled to have their photo taken and, with their LED lights, will sparkle like the stars.

This year's **Christmas grotto** is even more spectacular – The Ironing Board has been transformed into a snowy setting where you'll find Santa on his sleigh with his fairies and elves and a sack of gifts for the children.

We welcome children inspired by our winter wonderland theme to come in **fancy dress** – there will be prizes for the most creative costumes. We also have a **fancy dress competition for dogs** with a special first prize of a hamper filled with canine and feline gifts!



## On the programme

**Mark Jermin Stage School** based in Esher, established by actress **Charlie Brooks** which offers outstanding training in the performing arts for children and young adults 4-18.

**Stage Studio** led by West End actress **Shelley Williams** and her handpicked team of exciting performers.

**Ember Choral**, famous for their classical repertoire.

**Ripieno Chamber Choir** established in 1947, renowned for their sacred and secular music with an emphasis on the baroque.

**School choirs** from both Thames Ditton and Weston Green.

**Not forgetting...** The Brownies, The Thames Ditton Crafters, The RNLi with Stormy Stan the Lifeboat Man, The Thames Ditton & Weston Green Residents' Association, plus more community groups and stalls.

## Thanks to all our Entertainers

Our brilliant  
Host and Compere,  
John McGuinn

Ember Choral Society  
020 8398 2440

Ripieno Choir  
020 8399 2714

Mark Jermin School  
01792 458855

Stage Studio  
07907 477135



the  
Crafters  
Thames ditton

the  
RIPIENO  
choir



... and everyone else who takes to the stage, showcasing their fantastic talent, free for the benefit of the community.

## Thanks to all our Fair Sponsors/Supporters – we couldn't do it without you!

Cllr Peter Hickman and  
Surrey County Council

Thames Ditton Today

Hawes & Co

The Thames Ditton  
& Weston Green  
Residents' Association

The Set Up Design

RJP Accountants  
& Tax Advisors

HJC Estate Agents

Colets Health & Fitness



The Thames Ditton High Street Christmas Fair 2015 is organised by The Thames Ditton High Street Retailers' Association – thanks to everyone in the team

Design: www.thesetupdesign.com Thames Ditton



THAMES  
DITTON  
TODAY



SURREY  
COUNTY COUNCIL

Organised by the  
Thames Ditton High Street  
Retailers' Association

Supported by Thames Ditton  
& Weston Green Residents'  
Association

Supported by  
Thames Ditton Today

Supported by  
Surrey County Council

# Christmas is coming... join in!



As this most joyous of times in the Christian calendar draws near, there is both a sense of excitement and expectation as Christians all over the world prepare to celebrate the coming of the Christ child.

In Thames Ditton this year, particularly for the congregation of St Nicholas Church, there is the added joy of being able to celebrate the festivities with their new vicar, the Revd Andrew Cowie. Andrew was inducted as their new minister early in September and it was with real pleasure and delight that the congregation and indeed the congregations of all the other local churches welcomed Andrew and his family to Thames Ditton.

Andrew is no stranger to this area. He was born and raised in East Molesey and he attended the Thames Ditton Infant School. He was also a chorister at the Hampton Court Chapel Royal. Andrew's wife Lucy, a sixth-form teacher, is from Claygate. Their first home was in Thames Ditton and their first child, Thomas, was baptised in St Nicholas, so there is a real sense of coming home for the Cowie family.

Andrew originally worked in IT but has always been involved with the Church and he and his family spent a year in China on mission work, with both Andrew and Lucy teaching while there. When they returned to the UK Andrew took up a post on the staff team at Holy

Trinity Church, Claygate, as the Children and Families Minister.

It was during this time that he decided to answer his call to become an ordained minister. He studied theology at Wycliffe Hall, Oxford University and afterwards took up the post of assistant curate at St Paul's, Woking. Andrew lists as his hobbies running, reading and baking and he and Lucy enjoy going to the theatre.

Andrew and Lucy, and their children Thomas, William, Eleanor and Archie, along with their dog Mabel, are very much looking forward to this, Andrew's first Christmas as the vicar of St Nicholas Church.



*Reverend Andrew Cowie, St Nicholas*



# Claremont Fan Court School

An independent co-educational school for pupils aged 2½ to 18 years

## Come and visit us

Pre-Preparatory and Nursery School  
2½ - 7 year olds

Preparatory School 7 - 11 year olds

Senior School 11 - 18 year olds

Prospective families are very welcome to attend.  
For further information please telephone  
**01372 473624** or email  
**info@claremont.surrey.sch.uk**



## Christmas activities at the various churches

All of the churches in our area have a variety of Christmas activities in addition to their normal services to which all are welcome – whether you are a Christian or not. The children’s activities range from Toy Services, when congregation members bring in toys that will be donated to various local charities, Christmas Messy Churches, Christingle services, a Crib service and a Children’s Christmas Eve Candlelight service, at all of which the Christmas story is retold for little ones – and some not so little!

For adults, aside from the various church services there are social gatherings such as Community Carols, A Box of Delights (an

evening of Christmas songs, stories and skits plus mulled wine and mince pies!), a Christmas flower arranging and wreath making demonstration, a Christmas Bazaar, a Frozen Sing-along – all designed to get you into the Christmas spirit.

All Churches have a Nine Lessons and Carols Service during which Scripture readings which relate to the Christmas story are interspersed with carols. It’s the Christmas equivalent of ‘songs of praise’. For non-Christians this would be a good service to find out what it’s all about.

Below are listed the Christmas activities of the various churches in our area, although you can always check their websites to see what else is happening at the Church. Yes – all the Churches have websites!

### St Nicholas’s, Thames Ditton

6 December	10am	Family Toy Service
10 December	9.30am	Tots Praise in Church Hall
12 December	3.30-5.30pm	Kids Christmas Crafts Fun (please book in advance)
20 December	10am	Christmas Sunday School
	3pm	Christingle Service
	6.30pm	Nine Lessons and Carols
24 December	3pm & 5pm	Nativity Tableau & Blessing of Crib
	11.30pm	Midnight Communion
25 December	8am	BCP Holy Communion
	10am	Christmas Day Family Service

### All Saints, Weston Green

29 November	7pm	Advent Carol Service
5 December		afternoon/early evening Sing-a-long a Frozen, Christmas Fair and carol singing
13 December	4pm	Christingle Service
20 December	7pm	Nine Lessons and Carols Service
24 December	2pm and 4pm	Crib Services
	11.30pm	Midnight Mass
25 December	9.45am	Sung Eucharist



## Brighten up your Garden!

Is your garden in need of a makeover?  
From planting plans to a simple injection of colour

**Green Room Garden Designs** can help  
020 8398 5703

Anna 07801 921166 – Kate 07956 641881  
RHS and Merrist Wood Qualified

## R P Brown

Est. 1968 – Traditional, reliable,  
and conscientious local plumber

Registered with the Institute of Plumbing  
and Heating Engineers

Approved member of Surrey C.C.Trading  
Standards 'Buy with Confidence' Scheme

*No call out charge and no minimum charge,  
free written estimates,  
one year parts and labour guarantee,  
full public liability insurance.*

Tel: 020 8398 0207

Mobile: 07973 636672

56 Speer Road, Thames Ditton,  
Surrey KT7 0PW

[www.plumb-master.co.uk](http://www.plumb-master.co.uk)  
e-mail [info@plumb-master.co.uk](mailto:info@plumb-master.co.uk)

**Toby Mayers**  
**Injury and Rehabilitation Specialist**

Claim a free 15 minute assessment  
by calling Toby on:  
**07738 262 889**  
or email:  
[toby@tjmtraining.com](mailto:toby@tjmtraining.com)  
[www.tjmtraining.com](http://www.tjmtraining.com)

**TJM TRAINING**  
recovery | nutrition | fitness

shop **signs** van **signs** window **signs**  
for sale **signs** sticker **signs** frosting  
warning **signs** banner **signs** plaques  
display **signs** posters **and** more...

**flyingcolours** call 020 8398 1770

## Our Lady of Lourdes

6 December	6pm	Advent Reconciliation Service
13 December	3.30pm	Senior Teas <i>followed by</i>
	5pm	Advent Reflection and carols
24 December	6pm	Children's Mass
	10.30pm	Carols <i>followed by</i>
	11pm	Christmas Mass
25 December	9am & 10.45am	Christmas Day Mass
26 December	10am	Boxing Day Mass

## United Reformed Church, Thames Ditton

28 November		Christmas Floral Workshop
5 December	7 for 7.30pm	'A Box of Delights' (an evening of skits, readings and carols to get people in the mood for Christmas)
13 December	11.45am	Toy Service
	3.30pm	Messy Church, Christmas thoughts
20 December	10.45am	Nine Lessons and Carols Service
24 December	6pm	Children's Christmas Eve Candlelight Service
25 December	9am	Christmas Day Service

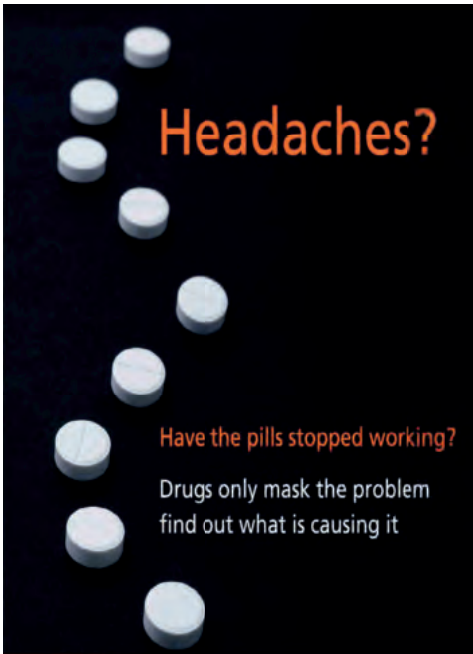
Whatever your faith or beliefs, may this holiday time be a happy one for you and, if you feel like joining in any of the activities listed above, please do. You will be very much welcomed. And when the joyful Christmas bells ring out on Christmas morning, may the

traditional blessing of 'Peace on Earth, Good Will to all people' be taken up so that in our troubled world joy may come to all. A happy and blessed Christmas to you all.

**Linda Lambert**



*Nativity scene*



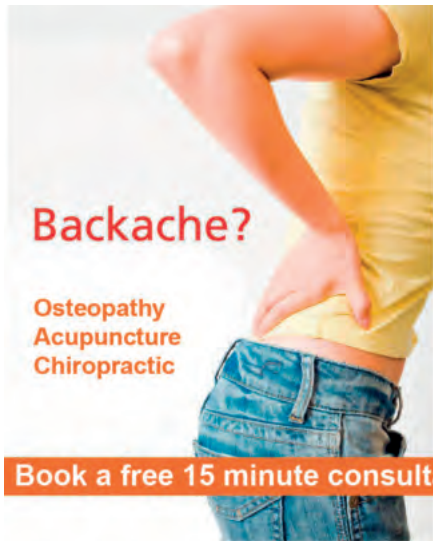
## Headaches?

Have the pills stopped working?  
 Drugs only mask the problem  
 find out what is causing it

## Children should not get back or neck pains

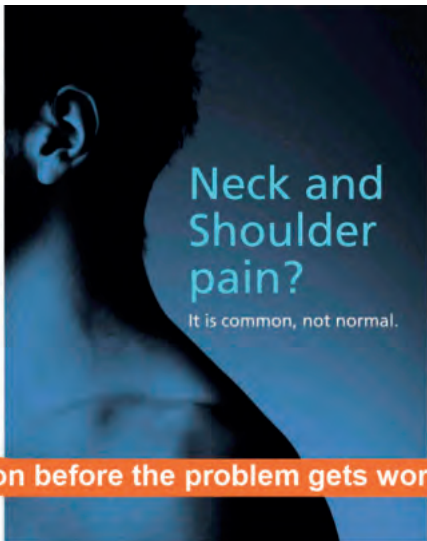


Is their posture  
 developing correctly?



## Backache?

Osteopathy  
 Acupuncture  
 Chiropractic



## Neck and Shoulder pain?

It is common, not normal.

**Book a free 15 minute consultation before the problem gets worse**

**Clinics in Thames Ditton & Kingston**  
**020 8786 6367 [www.spinaljoint.com](http://www.spinaljoint.com)**  
 7 Lime Tree Avenue KT7 0NA





# The League of Friends of Thames Ditton Hospital at Emberbrook



Every January for many years the League of Friends of Thames Ditton Hospital at Emberbrook held a pantomime and supper to raise funds for local community health projects. Sadly there will not be one in January 2016.

The Friends have a long history of fundraising. Before the Second World War Thames Ditton had a Cottage Hospital in Weston Green Road which was run entirely by voluntary contributions raised by the Friends of Thames Ditton Cottage Hospital. Local GP, Dr George Tickler, was one of its surgeons. In 1948 when the NHS was founded, the Cottage Hospital was absorbed into it. On-going funding for services was to be provided by the NHS which agreed to continue running the Cottage Hospital and provide care in the local community, but in 1986 the Cottage Hospital was closed.

Some years later an opportunity arose for a replacement community health facility. Based at Emberbrook it included the Giggs Hill Doctors' Surgery and Emberbrook Nursing Home. The Health Authority, recognising the need for a community hospital, agreed that the Emberbrook Nursing Home would be run privately but would include 14 beds funded by the NHS in the George Tickler Wing. The beds were for 'step up'



(patients referred by their GP to include respite care to support carers) or 'step down', (those needing rehabilitation before returning home from hospital). It was to fulfil a similar role to Molesey Hospital.

However, the East Elmbridge & Mid Surrey Primary Care Trust (PCT), the health authority at the time, refused to be bound by the agreement and stopped funding any beds at Emberbrook.

Nobody wants to stay in hospital longer than is necessary. It is in the patient's best interests to return home at the earliest opportunity. However, some patients, who no longer need treatment or monitoring in an acute hospital, are not fit enough to go straight home. Community hospitals provide the intermediate level of care they need in a more relaxed, friendly environment and they free up acute hospital beds for more seriously ill patients. The current Chair of the League



# simon simpson

BA(Hons) MSc MAREBT BABCP UKCP MNRHP

Cognitive Behaviour Therapy  
Clinical Hypnosis



Registered with Bupa  
and all major insurance  
companies

**Expert, confidential treatment for:**

- Panic
- Workplace Stress
- Low Self Esteem
- Insomnia
- OCD
- Depression
- Anxiety
- Irritable Bowel Syndrome
- Phobias
- Anger

clinics in Esher, Hampton Court and at The London Bridge Hospital

full details at: [www.cbt-surrey.co.uk](http://www.cbt-surrey.co.uk) tel: 07801 450 477

## NEIL EVANS

HEATING & PLUMBING SERVICES

Repairs • Parts • Bathrooms • Boilers • Gas • Plumbing

Local Qualified **PLUMBER** and **GAS SAFE** Engineer



[www.neilevansplumber.co.uk](http://www.neilevansplumber.co.uk)  
email: [neil@neilevansplumber.co.uk](mailto:neil@neilevansplumber.co.uk)  
messages: 020 8398 4259 • mobile: 07906 412 170



## THAMES DITTON UNITED REFORMED CHURCH

Speer Road – close to Thames Ditton station

Services at 10.45 on Sundays

Secretary: Mrs Linda Lambert

Tel: 020 8398 1476 – Email: [lindanmlambert@aol.com](mailto:lindanmlambert@aol.com)

**WELCOME TO ALL**

Find us at <http://www.tdurc.org.uk>

Hall bookings telephone: 020 8224 6396



of Friends is RA Councillor Karen Randolph, who says: *“The elderly in particular need more time to rehabilitate after acute illness in an environment that is not overly institutional.”*

Throughout the years of turbulence the League of Friends continued to fundraise for local health projects. The PCT also cut back on local clinics but when MEDICS was formed (a company started by local NHS GP’s) it organised new outpatient clinics at what is now called Emberbrook Community Centre for Health, and the League of Friends funded items of equipment. Eight years ago at a cost of £40,000 they provided an ultrasound machine which, amongst other conditions, can detect stomach and chest cancer. GP’s can book patients for a scan within two weeks instead of 12 at Kingston Hospital. Patients are also referred from Cobham, Claygate, Esher and Molesey so it benefits the wider community by reducing a backlog of patients at Kingston Hospital. The clinic’s doctors and clinicians are paid for by the Clinical Commissioning Group.

The League of Friends has also funded ENT (Ear, Nose and Throat) equipment costing £20,000 and in 2013 spent £40,000 on an echocardiograph machine which takes an ultrasound scan of the heart. Mindful of previous experience, the League retains ownership of the equipment.

I asked Karen what equipment they want to buy next. *“On the understanding that the Surrey Downs CCG will continue to commission the valuable ultrasound service, we are planning to upgrade the ultrasound machine. This is a costly exercise and one which clearly demonstrates to the CCG as well as to the*

*community just how much value the Friends can bring to the local health service. Future fund raising will of course depend upon the extent to which the CCG and local health service providers engage with the League of Friends.”*

Surrey Downs Clinical Commissioning Group (CCG) has undertaken a review of Community Hospital Services which is now out for consultation. Karen is hopeful that the CCG will continue to provide support for these invaluable services.

Raising funds for any community-based project requires a lot of time and enthusiasm from many people, time which is given willingly when it is in a good cause and in the knowledge that funds raised will benefit the local community. The close dialogue between the Friends and MEDICS, who co-ordinated and ran the clinics at Emberbrook, illustrated how valuable a good partnership between the health service and the community can be. Sadly the demise of MEDICS resulted in the loss of the previously much-valued dialogue and partnership between the Friends and the principal provider and co-ordinator of community health services in the area as well as with local GPs.

Karen says: *“The Friends of Thames Ditton Hospital at Emberbrook remain hopeful that the value of the Friends being actively involved in the provision of local health services will be recognised and developed in the future. Local people have been very generous in the past; we hope this strong connection between those providing local NHS services and those who benefit from them can be re-instated and continue into the future.”*

**Sandra Dennis**

# RUSSELL-COOKE | SOLICITORS

We can offer you high-quality specialist advice on most legal matters, personal or professional - from employment-related issues to property transactions, wills and estate planning, relationship breakdown and the care and protection of the elderly.

+44 (0)20 8546 6111  
[www.russell-cooke.co.uk](http://www.russell-cooke.co.uk)



Brittain Hadley is an independent and professional firm of Chartered Building Surveyors offering the following services:

- Residential Surveys and RICS Condition Reports
- Project Management of refurbishment, new build and extensions
- Party Wall Awards
- Planning applications for residential and commercial premises
- Architectural drawing and design services
- Specification of works and building contract administration
- Dilapidations acting on behalf of landlord or tenant
- Advisors on sustainability matters

Tel 020 8742 7704 E-mail [info@brittainhadley.co.uk](mailto:info@brittainhadley.co.uk)  
1 Claremont Road, Surbiton, Surrey KT6 4QR

# A brief history of Church Walk



As you stroll along Church Walk you might think it was made as a convenient shortcut from the railway station to the Island, but it has existed since well before the railway came to Thames Ditton. It is a very old right of way, although dignified with its name only when housing development took place in late Victorian times.

## 1500s and before

The earliest documentary reference is probably a request in 1594 to the Court of Exchequer by Sir John Hill, who had leased the manor of Imworth or Imber from Elizabeth I following the dismantling of Henry VIII's deer chase in the Honour of Hampton Court. Sir John wanted to confirm that Church Field was held from the manor for a yearly rent of four nobles, and for finding hay for the lord's horse when he went to church. The case adduced rights of coach way, and cart way of the farmer of the manor, through the field to the church. Church Field was adjacent to St. Nicholas Church west by south-west, through which the Walk passes; and the manor farm, of which the Tudor barn was destroyed in the 1960s, was situated in the vee of land between what is now Weston Green Road and Ember Court Road. The case suggests that the right of way now known as Church Walk existed in the times before the manor was annexed by Henry VIII. The path might even date from the time St. Nicholas was established as a chapel-of-ease under All Saints Kingston

in the early twelfth century. The will of Henry Bridges in 1719 refers to the acre on which the almshouses were built which abutted on Hoe Lane (now Station Road), "*lying next and adjoining to the Church ffootway.*"

It also mentions woodland abutting on Imber Wood towards the west, and towards the north upon the "*lands leading from Thames Ditton Church unto the Mannor house of the Lordship or Mannor of Imber*". In the archives of All Saints Weston there is a faded postcard from the mid 1800s depicting the huge trunk of a once mighty oak tree at the end of Church Walk which now gives onto Speer Road.



*Ancient oak at the west end of Church Walk*



Roque's map of 1768

By oral tradition the tree had marked part of the boundary of Henry VIII's deer chase. This is plausible. The exact borders of King Henry's forested chase are no longer recorded, but the best efforts of archaeologist Simon Thurley to map it out, in a 2004 paper published by the Surrey Archaeological Society, are consistent with the reputed boundary oak in the photo.

### 1700s and 1800s

Roque's map of Surrey published in 1768 shows the walk to the church as a significant right of way. You can see the manor farm directly under the "G" of Weston Green. There is also a significant lane northwards from the west end of the Walk, along the line where Speer Road is today - this however is not shown in maps from the time of the first Ordnance Survey in 1801. I wonder whether it had

earlier marked the boundary of the hunting chase?

The St. Nicholas Vestry minutes of 28 October 1826 record that maintenance of the walk to the church was already the responsibility of the public authorities when it was moved that the Surveyors of the Highways "*do make good the foot path leading from the Church yard across the fields leading to Weston Green and keep it in repair.*" The following year, on 10 June 1827 Admiral (Robert Stuart) Lambert seconded by Cesar Picton successfully moved "*that the ancient foot path leading from the Church to Weston Green, be preserved by the Surveyors.*"

At the time of the tithe apportionment of 1843, holdings along the Walk were as shown in the diagram. Even by this time the name "Church Walk" had not been formalised – for example a deed of 1829



Tithe apportionment 1843

concerning the cottage of Joseph Wells (one of several generations of market gardeners) refers to it in similar terms to the earlier Vestry meetings as *“a footpath leading from Weston Green to the church at Thames Ditton”*.

Since the late 1700s a small school for workers’ children had been run by the parish in houses by the churchyard – now

part of Warwick Square. In 1814 a foundation stone for a school was laid at the church end of Church Walk, but funds were lacking and two years later plans were abandoned while schooling was carried out in the church vestry.

With the spread of National Schools a school for local children was built at what is now St. Nicholas Mews on Church Walk where the buildings, converted for residential use, can still be seen, and the foundation stone laid in 1844 by curate Rev. Henry Pollard is embedded in the wall of no. 2. A school for Juniors was built at the south-west end of the Walk, opening in 1861, and the earlier one became the infants’ school.

Subsequent building saw a larger Junior School (now the Infant School) with the others remaining for infants and girls until eventually converted to Old School Square.

The Ordnance Survey map published in 1871 shows the National Schools, and



Ordnance Survey map 1871

# Karen's Angels

The All Needs Carers



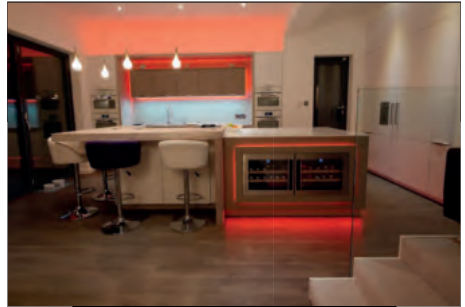
Karen's Angels is a friendly local care company, operating in Surrey.

We provide professional 24 hour care, social and personal care services.

We are very proud of the excellent reputation we continue to achieve with our customers, their families, local authorities, GP's and DN's.

For further information please contact

Karen/Andrea  
02082247848  
07760220604



**MOORE**  
*By Design*

PROFESSIONAL KITCHEN DESIGN

The Hersham Centre, Hersham

T: 01932 379076

New online gallery with 150 images...

[www.moorebydesign.co.uk](http://www.moorebydesign.co.uk)

A centre dedicated to  
holistic  
& complementary  
healthcare for all



**We offer a range of therapies that will effectively treat a variety of problems. One of the many therapies we offer is Cognitive Behaviour Therapy...**

**Cognitive-behaviour therapy (CBT)** is a highly effective form of talking therapy that helps people deal with emotional difficulties by addressing their underlying unhelpful thoughts and behaviours. NICE guidelines recommend CBT as the treatment of choice for a wide range of concerns, including Depression, Anxiety, OCD, Trauma, Phobias, Insomnia, and Panic.

CBT is a focused and practical process that is orientated towards discovering the source of your problems and then finding lasting strategies that enable you think and act in more appropriate, realistic, and helpful ways - putting you back in control.

To find out more and to talk in confidence about any issues that concern you, contact Kent Clinic's resident CBT therapist, Simon Simpson, on 07801 450 477.

Tel: **020 8941 2846** [www.ClinicofNaturalMedicine.co.uk](http://www.ClinicofNaturalMedicine.co.uk)

Above Kent Chemist, on 2nd Floor, 104 Walton Road, East Molesey, Surrey KT8 0DL



also some of the orchards and market gardens along the Walk which had a ready market outlet in London after the main railway line opened from 1838, with Ditton Marsh Station (now Esher Station) soon after; then in about 1851 when Thames Ditton station opened on the Hampton Court branch line.

## Towards the present

By the turn of 1883 Church Walk is recorded as being used mainly by school children in the week, but John Parker drove a horse and cart, cows and pigs along the Walk. It was not to remain fields, schools and a couple of houses for much longer. Proximity to London and expanding local industries were opportunities for development. The Speer family owned much of the land around the Walk. Their deeds refer to it as "Church Walk" for perhaps the first time. The first new houses were the semi-detached cottages now numbered 4 and 6, built about 1888 to the order of Hannibal Speer, reportedly for his gardeners. The semi-detached houses along the northerly side of the Walk were built from about 1890 to 1892, by Elam Ellis, the builder retained by the Speers. Thereafter building on the southerly side went quickly, being completed by the Ordnance Survey special edition of 1911.

The late Victorian houses were given names rather than numbers. They attracted a mix of occupants, from skilled labourers like members of the Tagg family, watermen and boat-builders, through small businessmen such as members of the Hawkes family who ran the mineral water and ginger-beer bottling plant in the High Street, to the newly-emerging middle classes including a widow who ran a boarding house and a sprinkling of theatrical and arty folk.

These days the Walk is home to a wide mix of residents including craftsmen, surveyors, civil servants, teachers, lawyers, PR and media people, graphic artists, local businesses, a former resident who became one of the first women ordained in the Church of England, another who took a motor scooter round the world as a young man and became a travel journalist, and another who was the long-time PA to the Chairman of a posh merchant bank. There are all ages, from young families to mildly eccentric pensioners. Church Walk has a strong sense of identity and community, with highly enjoyable street parties. You can hear the dawn chorus and no cars. It's a charming place to live.

**Keith Evetts**

## Antique Clock Restoration & Repair

Specialising in Grandfather, Dial, Bracket and Carriage Clocks

**Contact: Mark Rowe M.B.H.I**

BADA Diploma. Member of the Watch & Clockmakers Guild

West Dean Diploma.

**Tel: 020 8605 0331**

[www.theclockgallery.co.uk](http://www.theclockgallery.co.uk)

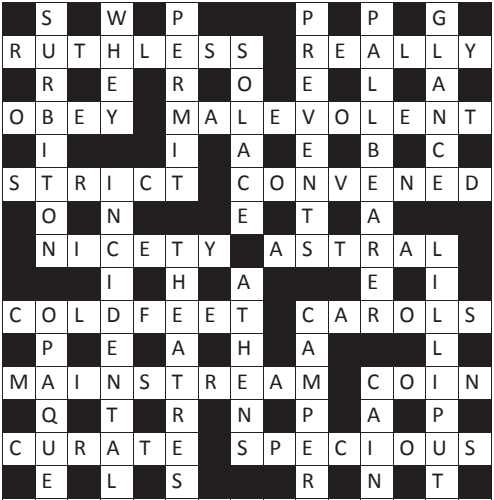
Additional Restoration services available for Watches, Books,  
Ceramics and Fine Furniture.

Antique Clocks also bought and sold.



# Solution to the Autumn Crossword

by Maureen Willcox



Congratulations to the senders of the first three correct entries opened in the shuffle. Each wins a £5 voucher to spend in local shops.

Penny Clarke  
70 Longmead Road  
KT7 0JF

Catherine Dunne  
12 Kings Drive  
KT7 0TH

David Pascoe  
1 Burtenshaw Road  
KT7 0TP



## Alan Greenwood & Sons Independent Family Funeral Directors

[www.alangreenwoodfunerals.com](http://www.alangreenwoodfunerals.com)



Our Commitment is to Provide a Personal and Caring  
24hr Service in a Dignified and Professional Manner

- A choice of the latest Jaguar or Mercedes Hearses and Limousines
- Horse drawn funerals
- Classic and Vintage Hearses
- Home visit arrangements
- Pre-paid funeral plans
- Memorials and monumental masonry
- Very competitive charges

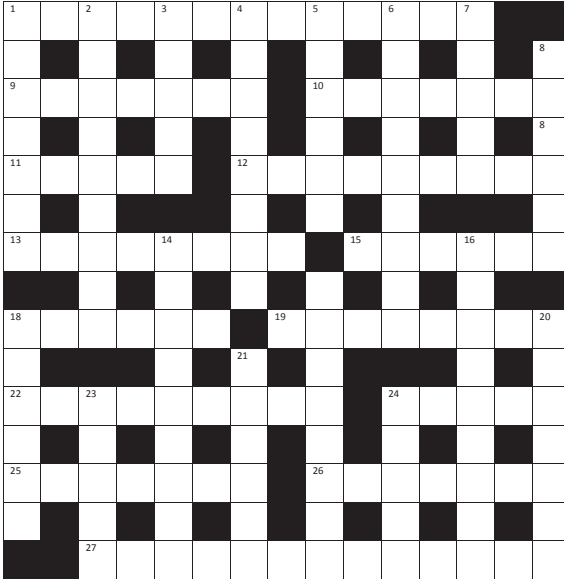


57 Fleece Road, Long Ditton, Surrey KT6 5JR  
1 The High Street, Claygate, Surrey KT10 0JG  
13 Molesey Road, Hersham, Surrey KT12 4RN  
259 Ewell Road, Surbiton, Surrey KT6 7AA

Tel: 020 8398 0012  
Tel: 01372 377 377  
Tel: 01932 260 046  
Tel: 020 8399 4455

# Winter Crossword

by Michael Jackson



The first three correct entries randomly opened after the closing date 8 February 2016 will win a £5 voucher to spend in local shops.

Please send the completed puzzle (or photocopy) enclosing your name and address, with the envelope clearly marked 'Crossword Competition' to:

Thames Ditton Today  
 Crossword Competition  
 24 High Street  
 Thames Ditton  
 KT7 0RY

## ACROSS

1. First day asleep, dreamt at sea on it (6,7)
9. Impressive design from a plate (7)
10. Island Parliament (7)
11. Made a mistake (5)
12. Six Brandenburgs from Bach (9)
13. Italian has old four in Gallery to touch up (8)
15. Bowling game (6)
18. A ruling dynasty of England (6)
19. Cartoon of potpourri of descriptive music (8)
22. Accounted for being lax in deep trouble (9)
24. Banquet of Steven (5)
25. I hear mother may use it for flavouring (7)
26. Corner of each side of an eye (7)
27. Pertaining to order, producers of the most pure honey (13)

## DOWN

1. Senior schoolboy (7)
2. Coe darted to be awarded (9)
3. Scottish land proprietor (5)
4. Common sense (8)
5. Ambit; range (6)
6. Meet manic chef making this (9)
7. A sort of cooking (5)
8. Tomas Alva... inventor (6)
14. Phrase with little or no meaning (9)
16. A Greek letter I post is about a nut (9)
17. Race at which I had 'nap', clear first at the post (8)
18. Units of heat (6)
20. Painters in dire straits (7)
21. A captive member of hospital staff? (6)
23. Fish on a pole to rest on (5)
24. Shady dealer has a Hedge Fund! (5)

# SERVICES, GROUPS, CLUBS, AND SOCIETIES

## SERVICES

Cheer (Concern and Help for East Elmbridge Retired)	Harry Livesey	01372 879321
Dittons and Weston Green Neighbourcare	Avril Ashworth	020 8398 7521
<b>Elmbridge Borough Council Community Support Services</b>		
Thames Ditton Centre for Retired People	Mon & Thurs	020 8398 5921
Thames Ditton Children's Centre	Tues, Weds, Fri	0208 3983772
Meals on Wheels, Community Transport, Dial-a-Ride, Alarm & Telecare services, Relief Carers	ask for service at central switchboard	01372 474474
Homesupport Elmbridge	Pam Howard (Manager)	01932 267128
Esher and District Stroke Club	Ann Pollock	020 8398 6132
Voluntary Action Elmbridge	Sally Dubery	01372 463587
Surrey Youth and Adult Education Service	Elmbridge Area	020 8979 8334

## GROUPS

Girl Guiding in TD & WG	Mrs K Williams	020 8398 1300
1st Thames Ditton Brownies	Mrs. Bronach Hughes	020 8398 1628
3rd Thames Ditton Brownies	Deborah Daoud	020 8398 5521
2nd Thames Ditton Rainbows	Alexandra Lyall	07779 616463
1st Weston Green (All Saints) Scout Group	Carole Needham	07975 842423
1st Weston Green Guides (All Saints)	Mrs. Louise Lewis	020 8398 4843
2nd Thames Ditton Guides	Mrs. Bronach Hughes	020 8398 1628
1st Weston Green Brownies (All Saints)	Mrs K Williams	020 8398 1300
2nd Weston Green Brownies	Mrs J Epps	020 8395 0595
1st Weston Green Rainbows	Mrs Helen Hill	020 8398 3135
4th Thames Ditton Ajax Sea Scouts	Alison Derrick	020 8398 0041
Dittons Scout Group	Laura Clarke	020 8398 3447
Coffee and chat (United Reformed Church)	Mrs. E. Barker	01372 467491
Emberbrook Trefoil Guild	Mrs. Adrienne Nealing	020 8398 5582
Friends of Bushey and Home Parks	Jean Smith	020 8977 9391
Molesey and Dittons Neighbourhood Watch	Chairman: John Haberfield	020 8398 5256
Parents and Toddlers(St Nicholas church)	Information	020 8398 7211
Ripieno Choir	Nick Harris	020 8399 7231
Surrey Bell-ringers	Nick Pattenden	Nick.Pattenden@cassiopae.com
Thames Ditton Villagers	Mark Badcock	07941 948177

## CLUBS

Albany Motor Yacht Club	Secretary	01784 466651
Arts and Heritage Club	Carol Butcher	01932 867511
Claremont PROBUS Club	Mr. P. Collins	020 8398 3125
Claygate Bridge Club	Hon. Secretary	020 8398 1710
Colets Health & Fitness	Giordano Orsini	020 8398 7108
Dittons Skiff and Punting Club	Hon Secretary	07710 139417
Dittons & Hinchley Wood Royal British Legion	Hon Secretary	020 8398 6263
Ember Players (Drama) Ember Sports Club	Anne Segall	020 8941 4528

Ember Sports Club	Zenda Hedges	020 8398 7038
Ember Sports Club: Bowls	Sylvia Jones	01932 788701
Ember Sports Club: Croquet	Dr. David Cooke	01932 862841
Ember Sports Club: Tennis	Annabel Duncan	020 8786 6318
Esher Bowling Club	Roger Cooper	01372 468109
Esher Bridge Centre	Paul Whicker	01372 460157
Esher Camera Club	Billy Buchanan	020 8398 3169
Esher 41 and Ex-Round Tablers' Club	Dr. R. Tudor-Williams	020 8398 0108
Folk Dance Club	Pam Phillips	01372 373745
Hinchley Wood / Dittons PROBUS Club	Geoff Francis	01932 867771
Long Ditton Cricket Club	Nigel Hardy	020 8398 8361
Long Ditton Garden Club	Heather Harvey	020 8398 2642
Model Railway Society (Hampton Court)	Secretary	01932 241224
Mothers Union (All Saints)	Mary Redington	020 8398 1189
Old Cranleigham Rugby Club	Tony Price	07801 837129
Old Cranleigham Hockey Club	Simon Marshall (Men)	07801 737695
	Helen Hawes (Ladies)	07771 557900
River Club (BMYC)	David Walker	0870 460 3586
Rotary Club, Esher	Geoff Morris	01932 868454
Robber Bridge TD Lawn Tennis Club	Val	020 8399 9972
Surbiton Croquet Club	Alec Thomas	020 8398 2391
Surbiton Golf Club	Secretary	020 8398 3101
Surbiton Hockey Club	Secretary	020 8398 2401
Thames Ditton Lawn Tennis Club	Chris Lewis	07770 562569
Thames Ditton & Esher Golf Club	Mark Rodbard	020 8398 1551
Thames Ditton Squash Club (Colets)	Dave Peck	020 8398 7108
Thames Ditton Cricket Club	Howard Frish (Secretary)	07947 561449

## SOCIETIES AND ASSOCIATIONS

Ember Choral Society	Linda Bridges	020 8399 5402
Esher Recorded Music Society	Miss S. M. Garrat	020 8398 8541
Esher and Molesey Garden Society	Chris Walker (Sec)	020 8398 6651
Esher and District Amnesty International	Cherry Eddy (Campaigns)	020 8398 4377
Hampton Court Way Allotment Association	Lettings: Piotr Hennig	020 8398 5358
Long Ditton Youth Club	Toni Izard	07749 633973
Lynwood Allotment Society	Gill Vickers	020 8398 4870
Molesey and District Antiques Society	Linda Lambert	020 8398 1476
NADFAS (Decorative & Fine Arts) Kingston	Mrs. Valerie Windsor	020 8549 9967
Soroptimist International (Kingston District)	Secretary: Pat Harman	020 8390 3507
Thames Ditton Women's Institute (W.I.)	Secretary	020 8398 8615

## OTHER

Cancer Research UK	Mrs. Vivienne Harris	020 8398 6787
Elmbridge Fairtrade Network	Judy Porter	020 8398 6401
University of the Third Age (U3A)	Hon Sec Anne Brown	01932 881633
Vera Fletcher Hall	Lettings: Helen Mason	08456 528 529
	Membership: Sue Morris	020 8224 0980

**Please contact the Editor to amend these listings**

# Blowing up a storm



Since making its debut in March the Ember Big Band has performed throughout Elmbridge and well beyond. It is now looking to recruit new talent in the trombone section. Deputy Musical Director, Lewis McGuinness, explained: *“We are a band of committed volunteers – most of us have families and day jobs. We often need ‘deps’ when regular members are unavailable and also have to deal with a turnover of players when younger members take on new commitments or go off to uni.”*

The band sets a high musical standard, but also believes that music-making should be fun. Guitarist Simon Cushing is its newest recruit: *“As a former rocker, the world of EBB has been tremendous fun,”* he said. *“The band is very welcoming and supportive and there’s a huge range of new music to get my teeth into including big band standards, swing, Latin and covers of recent chart songs. I’ve learned a huge amount and am flexing new musical muscles! To top it all, there are chocolate digestives in rehearsal breaks!”*

The band’s musical director is trombone legend and renowned arranger Bill Geldard. Born in County Durham, he learned his trade in local brass bands and school orchestras. After demob from National Service in the R.A.F. he joined the George Evans Orchestra as 1st trombone and played as a featured soloist. There followed spells with most of the big bands of the day including the

Squadronaires, Ted Heath, John Dankworth and Jack Parnell.

Ask him about the high spots of his career and there is a very modest pause (probably because they are too numerous to mention). Then he recalls playing all over Europe with Frank Sinatra, Liza Minelli and Sammy Davis Jnr.; having a solo specially written for him by Sinatra’s arranger, Nelson Riddle; performing with Henry Mancini at “The Pink Panther” film premiere in Switzerland; playing on the sound track of “Dr. No” and for the theme tune of ITV’s “Minder”.

Of the Ember Big Band Bill said: *“It’s a 23 piece amateur big band with three terrific singers – but we have a professional approach to everything we do. There’s a difference between being ‘amateur’ and ‘amateurish’. Everyone involved understands that, otherwise I wouldn’t have taken this on. There are no short cuts to good musicianship. Regular rehearsal is the key, but we have a lot of fun along the way – and so, we hope, will our audiences.”*

If you’d like to find out more, please visit [www.emberbigband.uk](http://www.emberbigband.uk) or contact Lewis McGuinness on 07785-370901. You may want to drop in to one of our ‘open rehearsals’ at The Greyhound pub, Weston Green, on the first Monday of most months (do check).

**Nick Handel**

Publicity Officer, Ember Big Band.  
020 8398 2789, 07742 139004



# Two ways to treat your Pet

To keep them healthy, pets should be seen at least once every 12-months by a vet. So why not bring them along to Beech House, Thames Ditton for their regular health checks. This way, we can detect potential illnesses early and nip them in the bud.

Our easy parking, fresh, modern & involving premises and professional engaging team will greet you each visit, making your whole experience more enjoyable.

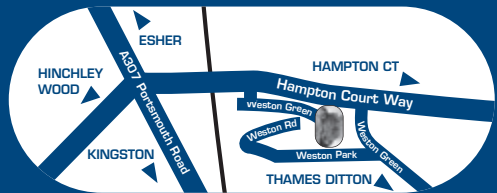
**Prevention, we think, is better than Cure.**

To keep them happy, play with them, exercise them, give them loads of praise and cuddles and spoil them with some special treats and toys. So pop into the "Beech House Pet Stop" for a wide selection of the very best.

(All the products and food we sell have been carefully chosen with your pet's best well-being in mind.)

**Beech House Veterinary Centre -  
Passionate about Healthy, Happy Pets**

[www.beechhousevets.com](http://www.beechhousevets.com)



Regular health checks will ensure a longer, healthier and happier life.  
**Ring now to book  
020 8398 4752**



**Beech House Veterinary Centre,  
Milbourne Stores, Weston Green,  
Thames Ditton, Surrey KT7 0JX**



**Well-Pet Centres also at:**

Hersham  
01932 220768  
Cobham  
01932 868688  
Shepperton  
01932 222257

Consulting Hours  
Monday - Friday  
9am-7pm

# ARIES CONSTRUCTION LLP

*GENERAL BUILDING*  
*EXTENSIONS & LOFT CONVERSIONS*  
*FULL PLANNING & DRAWING SERVICES*  
*ROOFING : PLUMBING : ELECTRICAL*  
*BATHROOM & KITCHEN REFURBISHMENT*  
*CARPENTRY & JOINERY*  
*INTERNAL & EXTERNAL REDECORATION*  
*REPLACEMENT WINDOWS & DOORS*  
*INSURANCE CLAIMS : FIRE, FLOOD, STORM DAMAGE*  
*SUBSIDENCE AND UNDERPINNING*  
*PLASTERING & RENDERING*  
*GROUNDWORKS & DRAINAGE*  
*PROPERTY MAINTENANCE*



---

*13 Thames Court, Victoria Avenue*  
*West Molesey, Surrey KT8 1TP*

---



*Free Estimates – Fast, Efficient, Friendly Service*  
*Local References Available*

**Tel: 020 8941 9191**  
**Mobile: 07836 608086**  
**[www.ariesconstruction.co.uk](http://www.ariesconstruction.co.uk)**  
**Email: [aries.construct@hotmail.co.uk](mailto:aries.construct@hotmail.co.uk)**