

THAMES DITTON TODAY

The Magazine of the



Thames Ditton
& Weston Green
Residents' Association



SPRING 2016

www.residents-association.com



Weston Green
School

An independent
co-educational day
school for children
aged three to eleven.

Visit our website
to find out about
our Key Stage 2
Extension
Project

“At Weston Green you don't have to make friends...
they're already waiting for you” *Pupil*

Learning with joyful enthusiasm

Tel: **020 8398 2778** E-mail: **info@westongreenschool.org.uk**
www.westongreenschool.org.uk

Weston Green Road, Thames Ditton, KT7 0JN

The Magazine of the



Thames Ditton
& Weston Green
Residents' Association

THAMES DITTON TODAY

Published quarterly since 1970

Editorial Team

Libby MacIntyre & Sandra Dennis
editor@residents-association.com

Magazine Design

Guy Holman
24 Angel Road
Thames Ditton
020 8398 8727

Distribution

David Youd
6 Riversdale Road,
Thames Ditton KT7 0QL
020 8398 3216

Advertisement Manager

Verity Park
20 Portsmouth Avenue
Thames Ditton KT7 0RT
020 8398 5926

Contributors

You are welcome to submit articles or images. Please contact the Editorial Team well in advance of the next deadline May 6

Advertisers

Thames Ditton Today is delivered to an influential 5000 households throughout Thames Ditton, Weston Green and Molesey. Contact Verity Park for rates for full page, half and quarter page advertising.

In this Issue:

News from the Residents' Association	7
News from Surrey County Council	13
Threat to Molesey Hospital	15
Boundary Commission changes to Thames Ditton, Weston Green, Molesey and Hinchley Wood wards	17
Know your Residents' Association Councillors Thames Ditton ward	21
Your Residents' Association in action 2015-2016	24
Know your Residents' Association Councillors Hinchley Wood & Weston Green ward	27
Bee Inspired	31
Miss Madge McIntosh blooms and fades	35
Solution to Winter Crossword	42
Spring Crossword	43
Services, Groups, Clubs and Societies	44
The Theatre in Thames Ditton	46
Photo credit: <i>Libby MacIntyre</i>	

www.residents-association.com

Officers and staff of the Association are volunteers, but we must fund costs of this magazine, administrative and election expenses, and other expenses such as spring bulb-planting and the village Christmas tree. The subscription is only £3 per household. If you can contribute more, please do so. Subscriptions can be paid via our website www.residents-association.com; subscriptions (in an envelope please) may be left at Boots Pharmacy, 14 High Street, Thames Ditton or Thorkill Road Pharmacy, 94 Thorkill Road, Thames Ditton. Or mail to Membership Secretary Peter Haynes at 6 Onslow Gardens, Thames Ditton KT7 0JJ. Thank you.

SPRING



time to speak to the property experts?

Hawes & Co

Established 1885

Thames Ditton Residential Sales & Lettings 020 8398 2500

www.hawesandco.co.uk

Offices also at: SURBITON, NEW MALDEN, RAYNES PARK, WIMBLEDON BROADWAY & WIMBLEDON VILLAGE



RESIDENTS' ASSOCIATION

About the Association

Annual General Meeting
8.00 pm on 15 March 2016
at Vera Fletcher Hall

Agenda:

1. **Minutes of the 2015 AGM** Meeting and matters arising there from
2. **Chairman's Annual Report;** receive, discuss and adopt the Annual Report for 2015-2016
3. **Accounts:** To receive the accounts for the year ended 31 December 2015
4. **Appointments:** to receive nominations and appoint officers and an auditor: President, Chairman, Vice Chairman, Hon Secretary, Hon Treasurer, Auditor
5. **Elections:** to adopt candidates at the Elmbridge Borough Council Elections 7 May 2016
6. **Resolutions:** to consider any resolutions submitted in writing to the Secretary by 1 March 2016
7. **Guest Speaker** Adrian Evans, Chief Executive of "Clean for the Queen"

Surrey County Councillor:

Peter Hickman, 3 Elmbridge Lodge
Weston Green Road, Thames Ditton
Surrey, KT7 0HY 020 8972 9807

Thames Ditton Councillors

Tricia Bland,
29 Station Rd, Thames Ditton 020 8339 0485
Ruth Lyon,
11 Riversdale Road, Thames Ditton 020 8398 3396
Karen Randolph,
Deepfield, Giggs Hill Road,
Thames Ditton 020 8398 5005

Weston Green Councillors

Ruth Bruce,
15 Imber Grove, Esher, 020 8398 8324
Tannia Shipley, 'Clinton House'
27 Lower Green Road, Esher 020 8398 2484

Officers:

Chairman: Rhodri Richards,
Ditton Cottage, Giggs Hill Road,
Thames Ditton 020 8224 5181
Vice-Chairman: Libby MacIntyre,
24 High Street, Thames Ditton 020 8398 5534
Hon. Treasurer: Christa Silverthorne
62 Thorhill Road Thames Ditton 020 8398 7101
Hon. Secretary: Florian Traub,
Longmead Road Thames Ditton 020 8224 2880
Membership Secretary: Peter Haynes
6 Onslow Gardens, Thames Ditton 020 8398 6019

Conveners of Sub-Committees:

Health and Community:
Karen Randolph (see above)
Planning: Graham Cooke
23 Ashley Road, Thames Ditton 020 8398 8509
Highways, Drainage:
Andrew Roberts, 1 Boyle Farm Road,
Thames Ditton 020 8786 6882



The Next Residents' Association Open Meetings are

Tuesday 15 March AGM and Tuesday 26 April 8.00pm
Vera Fletcher Hall, Thames Ditton

All who live or work in Thames Ditton and Weston Green are welcome



JOIN COLETS AND FEEL FITTER, HEALTHIER, HAPPIER

Our new luxurious Ladies changing rooms are now open, and completing this Spring:

- NEW Men's changing rooms
- NEW functional training studio
- NEW conservatory & outdoor terrace

CALL NOW TO BOOK YOUR FREE TRIAL AND FIND OUT MORE*.

SHORT-TERM CONTRACTS AVAILABLE*



020 8398 7108

St Nicholas Road • Thames Ditton • KT7 0PW

*Terms & conditions apply.


COLETS
HEALTH & FITNESS
www.coletshealthclub.co.uk

News from the Residents' Association to end February



Welcome to East Molesey Residents

We welcome to Thames Ditton Today the Molesey residents who as a result of the Electoral Boundary Commission's changes will be voting in Thames Ditton ward for Elmbridge Council elections in May.

We in the Thames Ditton & Weston Green Residents' Association have strong links with Molesey Residents' Association and work together on issues such as planning, car parks and maintaining our community halls. In recent years we joined them in opposing the Gladedale application on the Jolly Boatman/Hampton Court Station site, and the Friends of Thames Ditton and Molesey Hospitals are fighting together to keep services at Molesey Hospital.

Boundary Commission review of Elmbridge Wards

The Boundary Commission published its final decision regarding the structure of Elmbridge wards in January. The full details and implications of its decision for residents in Thames Ditton and Weston Green are covered in the article on page 17.

Christmas-Fun memories

This Christmas saw community Christmas Lights in a tree in Weston Green for the first time - thanks to tireless work from our RA Councillor Ruth Bruce.

The 'switch on' took place after a special day of festive celebrations starting with a singalong to the popular film Frozen and culminating in a colourful lantern parade. A big thank you to the members of the RA and All Saints Church Weston Green who together put on such a fabulous day.

The Christmas Fair in Thames Ditton High Street was also a great success with the Christmas lights looking as wonderful as ever. Thank you to RA Councillor Tricia Bland and everyone who was involved in making this a fun family afternoon out.

Weston Green Quiz Success

The Inaugural Weston Green Community Quiz took place in January with tables competing to be Weston Green Quiz Champions 2016.

The organisers were supported by Jamie Hazelgrave, Manager of the new Co-op store, who donated a bottle of wine to every table, Tom Duxberry of Marneys Inn who welcomed the winners with complimentary champagne and Phillip Johnson, Vicar of All Saints Weston Green, who had offered the use of the hall for the event.

Quizmaster Sam Dutton did a tremendous job at hosting a hotly-contested evening, which included picture rounds to test contestants' local knowledge of Weston Green. The eventual winners by the smallest of margins were 'The Magnificent 8.'



The Magnificent 8 – winners of the inaugural Weston Green Community Quiz

Given the success of the event, which was completely sold out with a waiting list for tables, it is likely that this will become an annual event.

Farmers' Market

After just three months in operation Thames Ditton Farmers' Market has been featured as one of the Best Farmers' Markets in London by Time Out Magazine. This is an amazing achievement and reflects the fact that the Farmers Market is attracting over 1,000 people per event. We hope these people will take a look at what the rest of the village has to offer and shop locally where possible.

Protecting our commons from incursion

The work on Weston Green to protect the commons from incursion by travellers is almost complete. Ward councillors and officers are monitoring the progress and measures are being adjusted and altered when new information and ideas are forthcoming. The contractor will not be paid until all the work is completed to the satisfaction of the council. Some ditching and banking work has also been carried out at Giggs Hill Green.

Milbourne Pond

Three trial pits have been installed around Milbourne Pond to provide an accurate measurement of the water table over the next six months. This will establish whether it may be possible to re-profile the pond to bring it below the level of the water table and re-establish its 'dew pond' status without needing to use a liner.

Planning

An application to create a backland development of two houses adjacent to Colets playing fields to the rear of Speer Road was refused by Elmbridge BC last year and went to appeal. The Planning Inspectorate has dismissed the Appeal. This was especially pleasing as the Inspector emphasised the need for any backland development to respect the character of the area. He said: *"I also acknowledge that Policy DM10 of the Development Management Plan (DMP) states that development to the rear of existing residential properties will be appropriate. However, it goes on to state that it will only be appropriate if the development respects the character of the area, which in this case the development would fail to do."*

Permission has been granted for change of use of **The Cricketers** pub (2015/3458) Weston Green to a pair of semi-detached houses. The familiar façade will remain.

The application at **47/49 Embercourt Road** (2015/3507) for a pair of semi-detached houses was refused as the building line was breached. Another application has now been submitted (2016/0177).

The application at **87/89 Grove Way** (2015/3368) for a pair of semi detached houses with room in the roof space and dormer window attracted over 100 letters of objection and is under consideration.

Weston Green School (2015/3070)
Planning permission was granted for a detached single-storey block of five classrooms. A stringent condition regarding the need for the school to submit a robust Travel Plan was attached to the permission. The Travel Plan will have to be considered by the East Area planning sub-committee in due course.

The appeal at **31 Imber Park Road.** (2015/2312) for a part two/part single storey side extension incorporating integral garage and front and rear dormer was dismissed.

The Newlands (2015/3316) Application for a first and second floor rear extension to provide four flats was refused by EBC.

The Co-Op (2015/4435) An application to vary Condition 9a relating to types of vehicles to be used and hours of operation was refused as “increased noise and general disturbance in the area would be harmful to the amenity of neighbouring residents.”

Getting to grips with litter

The RA is wholeheartedly supporting the newly set up Thames Ditton Litter Pickers, a community-minded group of volunteers who are on a mission to tidy up our village, making it a more pleasant place for us all.

The Litter Pickers are planning to set off on their litter picking expedition once a month, collecting the items thoughtlessly discarded by those who should know better! EBC have provided litter picking equipment for the volunteers (sticks, gloves and refuse sacks) and the RA have provided some high-vis vests for the group to wear. If you see them, please remember they are volunteers and doing a worthwhile job for the benefit of all!



Hopefully their forays will encourage litter throwing fiends to think twice about discarding their litter and bin it or take it home with them instead. For more information about the Thames Ditton Litter Pickers or to join the group, email Tricia: tdwgra@the-blands.co.uk

The Home of Compassion

The Home of Compassion in Thames Ditton is due to open to residents in early May and the marketing suite opened on February 29.

Caring Homes are planning an Open Weekend on 23-24 April for people to look around on escorted tours. The timings have not been finalised, but are likely to be 11am-3pm both days. They also plan to have an expert there to talk about the restoration programme to small groups.

Thames Ditton Station

The South West Trains Franchise covering Thames Ditton and Hampton Court Stations expires in Spring 2017 and the government have been consulting on proposals for Cross Rail 2 which would see these local stations becoming part of Cross Rail. You can see the Elmbridge Borough Council submission to the consultation on line at mygov.elmbridge.gov.uk/documents/s7862/Crossrail.

Ember River Bridge project.

A meeting was held on the banks of the Ember River attended by Elmbridge and

PAINTERS & DECORATORS

We are residential painters and decorators with 20 years experience, we offer wallpapering, painting and paint effects for internal and external decorating

We work in a clean and efficient manner, causing minimal disruption in your home and come highly recommended



Contact Clive Hogg
to discuss your
decorating needs

020 8339 0712

m: 07957 582296

e: clive.hogg.ch@gmail.com

15 Hampton Court Avenue, East Molesey, Surrey, KT8 0BG

SCIENCE TUITION

A Level & GCSE Tuition

**Biology, Chemistry
& Physics**

Tel: 020 8398 7365

**Alan Tucker:
2 Gainsborough Close,
Esher KT10 8JR**

**alan@asbtucker.co.uk
Enhanced CRB**

MICHAEL MOULE ANTIQUES

CONSTANTLY REQUIRE THE FOLLOWING ITEMS

All Furniture Pre 1920, Silver and Silver Plate,
Brass and Copper, All Clocks, Porcelain, Bronze
and Marble Statues, All Paintings, Gold Jewellery,
Old Dolls, Books, Pewter, Swords, Curios.

ANYTHING OLD AND UNUSUAL

For a fast and friendly service do not hesitate to
telephone any time, with absolutely no obligation.

IMMEDIATE CASH SETTLEMENT

020 8398 8072

26 Basing Way, Thames Ditton

Surrey County Council officers, bridge consultants Hewson Engineering and Thames Ditton residents Howard Baker and Andrew Roberts. The next step is a CIL application to fund a feasibility study by Hewsons. The study will include a topographical survey, geotechnical investigation of soil and will also include options for the bridge design.

Sport Relief Mile

Following on from 2014's successful event, which raised £450 for Sports Relief, the Elevate Boot Campers are going to hold another Sport Relief Mile on Giggs Hill Green on Friday March 18 from 3 – 4.30pm.

This is the chance for young and old (and those in the middle) to pay £1 and run, walk or amble a mile around the green for Sport Relief. There will be plenty of cake available (for a small donation) to help with the post-mile recovery! For further details contact Liam@elevatesport.co.uk

Summer plans

If you are starting to think about the summer make a note of 'A Day By the Seaside', this year's summer fair at All Saints Weston Green, Chestnut Avenue, which will be taking place this year on Saturday July 2 from 12.30- 3pm.

Highlights include many seaside attractions including Punch and Judy, a coconut shy, candyfloss and the annual Bake-Off challenge judged by Oli Blanc (son of Raymond).

Are you a secret gardener?

It is Thames Ditton's turn to host the Secret Gardens event. If you have or know of a garden that can be included please contact editor@residents-association.com

Errata

Oops ... in our autumn article on R.C Sherriff we added that he had been awarded the Military Cross. Alas, despite the fact that this information is widely reported it is wrong! Our author, Loretta Howells would not have made such an error and we apologise. It's a reminder to be wary of commonly reported information on the web!

River Thames Scheme - consultation

The Environment Agency are holding public drop in events re planned improvements to Sunbury, Molesey and Teddington Weirs. Go along to find out more and have your say

Tuesday 15 March 4:00pm – 8:00pm
Sunbury Court Conference Centre,
Sunbury-on-Thames, TW16 5PL

Wednesday 16 March
4:00pm – 8:00pm
Molesey Boat Club, Barge Walk,
East Molesey, KT8 9AJ

Tuesday 22 March
4:00pm – 8:00pm
Tamesis Sailing Club, Trowlock Way,
Teddington, TW11 9QY

Dates for your diary

Sport Relief Mile Friday March 18
Giggs Hill Green 3-4.30 pm

Farmers Market Saturday March 25
George and Dragon car park 9-1pm

Secret Gardens of Thames Ditton
Sunday June 19 1-5pm

Summer Fair All Saints Weston Green Saturday July 2 12.30 – 13pm

Residents-Association.com

Concerned about the performance of your Personal Pension or Stocks & Shares ISA?



A friendly, local and professional service

Mortgages
Equity Release
Investments
Tax Planning
Commercial Insurance



Call: 0208 398 6677 – www.knightjames.com

6 Station Road, Thames Ditton, Surrey, KT7 0NR

If you're having an outdoor event call us & let us put you.....



We specialise in offering a wide range of marquee solutions to suit any social or commercial event in south east london & surrey

Phone: 0208 398 7219
Mobile: 07864 585 181
email: undercover.events@yahoo.co.uk
web: undercovereventtents.co.uk





Surrey County Council has pushed through a budget that is full of uncertainties. The funding from central government has been cut and was far worse than the expectations. Just one example: the budget assumed that we would receive transitional funding of £20m this year and £37m next year. At the 11th hour the council was informed it would get just £11.9m this year and £12.2m next. The budget gives no details as to how savings will be made. We will have to do more for less as changing demographics mean that there will be more elderly, more school children and more looked-after children. A council tax rise of 3.99 per cent was approved (2 per cent is ring-fenced for adult social care).

Potholes are always a problem and it will take years to cure the problem. If you see one please report it via the SCC website and if it is 40mm or more deep it will be fixed within five days. Approximately 70,000 a year are fixed. Permanent repairs, where the hole is square cut and filled with hot tar, are guaranteed for two years.

Temporary repairs, where cold tar is used to fill, last for a short time and should be permanently repaired within a month. The program of major works “Project Horizon” is scheduling (and in some cases re-scheduling) further roads that are due to be resurfaced this and next year.

Parking in the Dittons never ceases to be of concern with many different conflicting opinions. SCC have retained a firm of consultants to undertake a review of parking across Surrey. If you have any views on the subject please contact the Parking Team at SCC who will record your requests. This can be done via the SCC website www.surreycc.gov.uk/roads-and-transport/parking/parking-reviews where you will find three methods of reporting your concerns. The review is expected to begin shortly and I hope that it will result in changes that will satisfy most residents.

Peter Hickman
Surrey County Councillor

Antique Clock Restoration & Repair

Specialising in Grandfather, Dial, Bracket and Carriage Clocks

Contact: Mark Rowe M.B.H.I

BADA Diploma. Member of the Watch & Clockmakers Guild
West Dean Diploma.

Tel: 020 8605 0331

www.theclockgallery.co.uk

Additional Restoration services available for Watches, Books,
Ceramics and Fine Furniture.

Antique Clocks also bought and sold.



Finding self enlightenment can be a very rewarding experience



Rewarding experiences are what our
customers have come to expect.

If you're thinking of letting or selling your home, please contact us on

Surbiton Sales:
020 8390 0404

Thames Ditton Sales:
020 8398 3707

Lettings:
020 8390 9290

Threat to Molesey Hospital – make your views known



The NHS is under great financial pressure and the causes are well known: an ageing population, medical advances offering more treatments, more people living with several significant health conditions etc. Limited resources need to go further - and the financial pressures are particularly acute in the Surrey Downs area, where there are several community hospitals: Leatherhead, Molesey, New Epsom & Ewell Community Hospital (NEECH), Cobham and Dorking.

Surrey Downs CCG has published a review of Community Hospital Services with four options for the future of Community Hospitals in this area. Two of these include the closure of Molesey Hospital to both inpatients and outpatients.

Option 1.

- Retain the 3-ward model at Dorking, Molesey and Epsom/Ewell
- Leatherhead: retain outpatient services only
- Other outpatient services to remain unchanged.

Option 2.

- Transfer inpatient and specialist neurological services from NEECH to Epsom General Hospital and transfer outpatient services elsewhere in locality.
- Leatherhead: retain outpatient services only
- Dorking and Molesey Hospital services to be unchanged.

Option 3.

- **Close Molesey Hospital.**
- Transfer inpatient services to Cobham and outpatient services to other nearby locations such as Emberbrook and GPs

- Leatherhead: retain outpatient services only

Option 4.

- Combines parts of Options 2 & 3 above
- Transfer inpatient and specialist neurological services from NEECH to Epsom General Hospital and transfer outpatient services elsewhere in locality.
- **Close Molesey Hospital.**
- Transfer inpatient ward to Cobham and outpatient services to other nearby locations such as Emberbrook and GPs
- Leatherhead: retain outpatient services only

These options are now the subject of a consultation that continues until May 5 2016. During this time there are a number of consultation events being held around the Surrey Downs area. For more details and to make your views known, contact Surrey Downs CCG:

- www.surreydownsccg.nhs.uk (where you can find the full consultation document),
- Tel: 01372 201500
- Email your views: contactus.surreydownsccg@nhs.net
- Contact the CCG by text (SMS) through their telephone service on 01372 998809

Molesey Hospital is at risk: Make your views known to the CCG.

Molesey Residents' Association and Thames Ditton & Weston Green Residents' Association will be holding a joint meeting as part of the campaign to save the hospital at 7.30pm on 8 March at Chandlers Field School, High Street, West Molesey KT8 2LX

Karen Randolph



M.P.B. Landscapes

All aspects of work undertaken:
hard and soft landscaping, patios,
fencing, decking, brickwork, turfing.

Mark Blunden

Landscaping since 1993
fully qualified, Merrist Wood trained
Tel: 020 8398 3509
Mobile: 07957 281 748
E-mail: markblunden@yahoo.co.uk

DOWN TO EARTH



**27 Church Walk
Thames Ditton
Surrey
KT7 ONP**

Phone: 020-8398-7219
Mobile: 07867-590-450
E-mail: downtoearth2008@live.co.uk

A family run, local gardening service

GARDEN MAINTENANCE, CLEARANCE & DESIGN AT AFFORDABLE RATES

Gardens can get out of hand very quickly, sometimes
it can be hard to keep on top of it all year round.

We can provide total garden clearances', regular gar-
den maintenance, garden design, fencing & paving, to
help create.....(and keep) the garden you've always
wanted.

Why not give us a call or drop us an e-mail to see
what we can do for you?

Boundary Commission Changes to Thames Ditton, Weston Green, Molesey and Hinchley Wood wards



The final recommendations from the Local Government Boundary Commission (LGBC) review of Elmbridge's ward configuration were published on January 5. The review resulted from the decision of the Council's Conservative administration to reduce the number of borough councillors

from 60 to 48. This reduced the present 22 wards (of which six have two councillors per ward), to 16, each with three councillors. RA councillors have worked with colleagues over the past two years to ensure that any redrawing of the ward boundaries does not break up long-standing communities.

They have also worked on an alternative proposal for the Weston Green, Hinchley Wood and Long Ditton two-councillor wards which would meet the LGBC's three criteria: electoral equality, reflecting community identities and interests, and providing for effective and convenient local government.

The LGBC published its draft recommendations last June, rejecting arguments for two-councillor wards, and proposing in our area:- a) Thames Ditton to lose the 940 residents on the Thorkhill side of Portsmouth Road (to go into Long Ditton ward), but gain a large chunk of Molesey East ward. b) Weston Green to join with the larger Hinchley Wood ward to form a single ward.

In the public consultation period following the draft recommendation, your Residents' Association (RA) led the campaign to let the LGBC hear our views. These were to retain the Thorkhill area within Thames Ditton ward and to extend the Weston Green area to include Lower Green in order to make a more even match with Hinchley Wood. There was no point in the RA arguing to join Weston Green with Thames Ditton, instead of Hinchley Wood, as this would have resulted in a ward size 40% above the LGBC's rules. The final results are as follows (and shown on the accompanying map).

Thames Ditton

As a result of a record 202 objections submitted, the LGBC reversed its proposal to carve up Thames Ditton ward by splitting off the Thorkhill area. It will remain part of Thames Ditton ward. This was entirely the result of all our persuasive evidence on our strong community identities, including shops, schools, village hall (now the Vera Fletcher Hall), village green (Giggs Hill Green), Girl Guides etc.

The LGBC wrote: *“Evidence received clearly demonstrated that our draft proposals would not reflect community identities. We are persuaded by the compelling evidence received and have transferred the area back to Thames Ditton ward. The change will result in a variance of 16% fewer electors for Long Ditton ward. However we consider this variance is justified given the very strong evidence received to justify the transfer of this area to Thames Ditton ward”.*

This is a triumph for local democracy or, as local resident Carol Ross of Westville Road said: “Power to the people”. It is reassuring that the LGBC listened to local residents and acted accordingly.

The LGBC's recommendation to add the Ember area of Molesey East ward (shaded mauve on the map) to Thames Ditton has been retained, and so we welcome those 1500 residents to their new ward. Our RA councillors look forward to meeting them and representing their interests at Elmbridge Council.

Weston Green

The LGBC largely rejected our proposal to include the Lower Green area in the new ward, although it has added a smaller area around Blair Avenue (shaded sage green on the left of the map). Weston Green will now be joined with the bulk of the current Hinchley Wood ward (also sage green on the map). Weston Green will have 45% of the new ward's electors, compared with Hinchley Wood's 55%.

The new ward will have three councillors - one less than in the present two two-councillor wards. This will inevitably mean more work for RA councillors who

are already among the hardest-working. Although it would have been preferable not to be merged into a larger ward, Weston Green is fortunate in that Hinchley Wood has a strong and long-established Residents' Association whose aims accord very much with our own RA.

For the May 2016 elections, the Executive committees of the two RAs have agreed to sponsor three candidates jointly under the banner, Hinchley Wood & Weston Green Residents' Associations. By virtue of its larger electorate, two of those will be from Hinchley Wood. Both RA's however are keen to stress that, no matter where the councillors live, they will represent all residents of the new ward equally, and the Associations will be working very closely together. Weston Green will still be a core part of the TDWG Residents' Association.

Do The Boundary Changes Affect County Council Divisions?

The changes to the wards will have no effect on county council division boundaries. However, they will lead to mixed county allegiances within the wards. In the new Thames Ditton ward, the former Molesey East area will still be part of the East Molesey & Esher Division, while the rest of the ward will remain in the Dittons Division, represented by our County Councillor, Peter Hickman. Weston Green will also remain in the Dittons, and Hinchley Wood in the Hinchley Wood, Claygate & Oxshott Division, as before.

Going Forward

As a result of the ward boundary changes throughout Elmbridge, all borough councillors will face re-election in May, regardless of how long they have been in post. So electors will have three votes this

time. The candidate receiving the most votes will win a four-year term, next a three-year term and third a two-year term. This is in order to retain the one-third-councillors-per-year elections for the future.

At our AGM on March 15 the Executive will recommend that the Thames Ditton and Weston Green Residents' Association adopts existing councillors Tricia Bland, Ruth Lyon and Karen Randolph, to stand for election in Thames Ditton Ward, and Tannia Shipley to stand for election in Hinchley Wood & Weston Green ward, alongside existing Hinchley Wood councillors Nigel Haig-Brown and Janet Turner, and thus adopting three councillors for each ward. Councillor Ruth Bruce who has worked tirelessly on behalf of Weston Green residents for the past four years will not stand for re-election; she is going to take up a new role as Director of a London based charity.

After the May elections there will be a period of adjustment as councillors (and RA Executive members) become more familiar with their new areas of responsibility. Regardless of boundary changes, for over 80 years Thames Ditton & Weston Green RA councillors have always worked closely together to represent their entire community, and that still remains the case. The Association will be working hard to ensure that, after the May elections, there will be four TDWGRA-sponsored Borough councillors, as well as our county councillor for the Dittons, serving our community.

Cllr Ruth Lyon
Peter Haynes

FUNERAL DIRECTORS AND MEMORIAL STONEMASONS



THE FAMILY YOU CAN TURN TO...

Seven generations of our family have been helping and advising local families in their time of need. For over 230 years we have been providing funerals, both modest and traditional, with care and compassion.

ESHER:	78 High Street	01372 463903
EAST MOLESEY:	156 Walton Road	020 8941 1412
THAMES DITTON:	37 High Street	020 8398 4586

Lodge
BROTHERS 1780
the family you can turn to

www.lodgebrothers.co.uk



FIFA
FUNERAL
INDUSTRY
FEDERATION

ASK ABOUT OUR
PRE-PAYMENT
FUNERAL PLANS

Custodian Trustee: HSBC Trust Co. (UK) Ltd.



WESTON GREEN

020 8398 6027

24 Hour Answerphone

Orthodontics for Children & Adults

Jane Eden BDS(Lon), MSc(Lon), MOrth, RCS(Eng)

Fraser McDonald BDS(Lon), MSc(Lon), PhD, MOrth, RCS(Eng)

- Gentle and Caring Environment
 - Private and NHS Practices
 - Evening and Saturday Appointments
- Available Privately

PRIVATE Practice:

Yewhurst
Weston Green
Thames Ditton
Surrey
KT7 0JZ

NHS Practice:

Oak Lane
Twickenham
TW1 3PH



www.weston-green-orthodontics.co.uk E-mail: wgop@jeden.freeserve.co.uk

Know your Residents' Association Councillor Thames Ditton Ward



Tricia W. Bland



Tricia has been a Residents' Association councillor for Thames Ditton since 2014 when she was voted in with the highest percentage of votes of any candidate in the Elmbridge local elections that year.

Married with three daughters, Tricia has been an active campaigner on many local issues including the successful campaign to save the Ember Centre, a centre for the elderly, now residing in the Thames Ditton Centre. She spearheaded the 'Say No to Pay & Display' parking campaign which defeated the proposals for parking meters in Thames Ditton village.

Tricia cares passionately about local shops and set up the Thames Ditton High Street Retailers' Association, coining the phrase, "Keep the Heart in our High Street" and she introduced the 'Think Local. Shop

Local' initiative. As well as fund-raising for the Christmas lights on the lime tree and over 40 Christmas trees along Thames Ditton High Street, she was the driving force behind the 2015 Christmas Fair and is one of the organisers of the recently established Farmers' Market. Looking forward, Tricia is currently working on a number of worthwhile community and business initiatives to coincide with the nationwide summer of celebrations for the Queen's 90th birthday.

On Elmbridge Council, Tricia sits on the East Area Planning Committee representing the views of residents, supporting objections to over-development, always mindful of the need to protect our heritage buildings, green spaces and environment.

Tricia tries her best to be a very accessible councillor believing firmly in breaking down barriers and being a voice for all residents, whatever their particular issues.

Ruth Lyon



TJBathrooms

**FOR EVERYTHING IN
LUXURY BATHROOMS
& SHOWERS**



Open: Mon to Fri 8am-5pm Sat 9.30am-3pm

121 ANYARDS ROAD, COBHAM, SURREY, KT11 2LJ (Car park to rear of building)

Tel: 01932 866471 / 868523

tjbathrooms@ntlbusiness.com • www.tjbathrooms.co.uk

FREE DESIGN & PLANNING SERVICE

Also at: 122 SUMMER ROAD THAMES DITTON, SURREY KT7 0QP 020 8398 4324



Ruth Lyon has been your local councillor since 1973 and is a past Mayor. She is perhaps best known for her work leading the development of the Vera Fletcher Hall in Thames Ditton and running the splendid theatre programme at the Hall for over 20 years, including the children's shows, drama and opera.

She has served as Governor and Chairman of Thames Ditton Infants and Junior Schools and is a member and past Chairman of the Friends of Thames Ditton Hospital at Emberbrook who have raised £65,000 to provide vital ultrasound and ENT equipment, which has dramatically reduced waiting times for local patients.

As your councillor she worked to provide new premises for Ajax Sea Scouts and for the Dittons Skiff and Punting Club, when they were both under threat of closure. She also worked with Elmbridge Council to support Thames Ditton Tennis Club in their successful battle to remain on their present site.

Ruth has always fought to preserve our Green Belt, open spaces and playing fields from development, and, as a member and past Chairman of the Thames Landscape Strategy, to preserve and enhance our wonderful river heritage. Along with other Residents' Association councillors she fought against the proposed disastrous Jolly Boatman/ Hampton Court Station development opposite Hampton Court Palace.

She is recognised by all groups as an extremely effective and tireless councillor in her work for Thames Ditton

Karen Randolph



Karen has been an Elmbridge Borough Councillor since 2007. She has sat on the Elmbridge Council East Area Planning Committee for the last nine years and has been Vice Chair for the last 5. She has also served on the Planning Committee for five years. This means that she is involved in planning at both local and strategic borough levels. Recently she spoke at the Public Hearing into the Taggs Boatyard application and she supported residents objecting to the proposed Angel Road Storage unit.

Karen is particularly interested in health matters. She is a co-opted member of Surrey County Council's Health Select Committee and has been involved with several 'Member Reference' groups liaising with various organisations involved with supplying health services across Surrey. She is Chair of Save Our Surrey Community Hospitals campaign and supports Molesey Hospital in Surrey Downs Clinical Consulting Group consultation for their Community Hospital Review. She is also Chair of The Friends of Thames Ditton Hospital.

Karen and her husband have lived in Thames Ditton since 1985. They have two grown up children. She is a past Chair of Thames Ditton & Weston Green Residents Association. Karen is a trained mediator, working as a volunteer mediator with Mediation North Surrey, she also runs her own market research consultancy.



Your Residents' Association

Notification to residents of key planning applications

Regular Open Meetings to engage with the council on important

Tannia Shipley & Karen Randolph elected to Elmbridge Borough Council

Web site and forum maintained as resource for all residents

Professional theatre, concerts, opera at Vera Fletcher Hall

High Street Christmas Fair & continued funding for High Street Christmas Trees & lights

Secret Gardens of Weston Green

Removal of fly tipping including asbestos

Supported residents' objections to inappropriate development

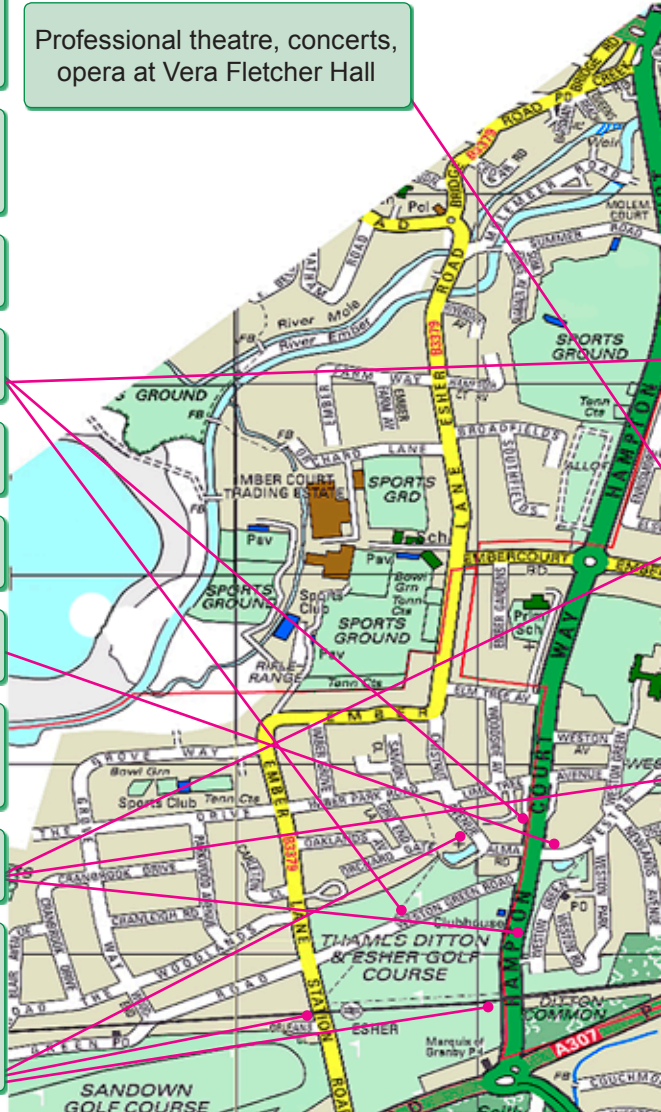
Weston Green Christmas Lights

Installed trial pits at Milbourne Pond & pond maintenance

Supported parents seeking long-term solution to secondary schools crisis

Traveller incursion deterrent measures

Continuing pressure for maintenance to prevent flooding at Esher station, and to resolve other long-standing flooding problems



ion in Action 2015-2016



Meetings to
community
topics

Constant vigilance to protect
Conservation Areas of Thames
Ditton and Weston Green

Liaison between contractors
at Home of Compassion
and neighbours

4,000 copies of Thames Ditton
Today distributed quarterly

Worked to strengthen
Council's Flood Risk Plan

Worked to protect Tagg's
Boatyard's future

Maintenance of flower beds,
Fountain Christmas tree,
planted 500 more spring bulbs

Supported High Street
garden scheme opposite
Fountain roundabout

Monthly Farmers' Markets

One hour parking for
High Street shopping

Supported objections to
Angel Road Storage units

Reversed Boundary
Commission's proposals
to remove residents to
Long Ditton

Continuing support and fund
raising for services for NHS
patients at Emberbrook





EYES WANTED



Elmbridge Neighbourhood Watch – *More effective, more relevant*

- There is now a website www.elmbridgenhw.ourwatch.org.uk
- Any resident can sign up to NHW by contacting your NHW Co-ordinator.
- The reach and profile is being raised with a first ever 'Eyes Wanted' advertising campaign.
- Essential crime prevention advice and police alerts are being sent out.
- SelectaDNA is promoted to mark your property for just £20 a kit. Protect your property against theft and enable the return of items lost or stolen.
- There is a strong focus on watches being 'active' to capitalise on the benefits.
- Membership is FREE.

Overall there is a drive to increase the value of NHW to the Community. There has never been a greater need for residents to take everyday responsibility for safeguarding themselves, their homes and property and to work as a community to look out for one another. We need to support the police in keeping us safe but the face of crime is changing and this presents new demands that we all keep far more aware of the risks and how to combat them. Neighbourhood Watch is a highly valued Organisation recognised nationally and locally; working in Partnership with the Fire Brigade, Surrey Police and other statutory agencies.

With an effective communication network already in place Elmbridge NHW is using this to proactively extend its reach by attracting more 'eyes'. Look out for the adverts around the borough and in newspapers and magazines, and check out our website to see how far we've come.

Not a member yet? Then sign up. Think you're in a watch but not receiving information? Then get in touch. We want to hear from you. We are determined that NHW will make a greater difference.

Contact the Regional Neighbourhood Watch Co-ordinator:
John Haberfield, tel: 0208 398 5256 email:jhaberfi@yahoo.co.uk

Know your Residents' Association Councillor



Hinchley Wood and Weston Green Ward

Tannia Shipley



Tannia has been a Weston Green Councillor since 1999 and has always considered this an honour. In the last 17 years she has served on most Elmbridge Council Committees including the Environmental; Community Affairs and Licensing committees but her biggest commitment is planning. She has sat on the main Planning Committee, and on the East-Area Planning Committee for the last 13 years. This is one of the busiest committees. It considers planning applications in Hinchley Wood and Weston Green amongst others, so she is very familiar with both areas. She believes planning to be vitally important as the pressure from development is so great. Tannia is currently Deputy Mayor of Elmbridge and thoroughly enjoys meeting people on the many events she attends across the borough.

Tannia is also very keen to support the vulnerable in our community and has served on the Elmbridge Older People's Advisory Body for many years, having been Vice Chair and now Chair for the last two. She is Elmbridge Borough Council's

representative for CHEER – Care and Help for East Elmbridge Retired. CHEER is an excellent local, small charity which helps the elderly and provides a Befriending Service which is so appreciated by those who are socially isolated. She is also a Trustee of both Elmbridge Trust for Older People and Walsingham Care-another local charity that helps the vulnerable, often elderly members of our community. Tannia is keen on the Arts and has been a Trustee of the R C Sherriff Trust since 2000 and its Chairman for many years. This Trust is a grant-giving charity set up for the advancement of the arts in the Borough of Elmbridge.

Tannia and her husband moved to Weston Green 30 years ago with their two young daughters. Her professional background was in education culminating in a senior management post in a large London Comprehensive School.

Nigel Haig-Brown



I have been an Elmbridge Borough Councillor since May 2014. At Elmbridge Council I sit on the East Area Planning



Claremont Fan Court School

An independent co-educational school for pupils aged 2½ to 18 years

Come and visit us

Pre-Preparatory and Nursery School
2½ - 7 year olds

Preparatory School 7 - 11 year olds

Senior School 11 - 18 year olds

Prospective families are very welcome to attend.
For further information please telephone
01372 473624 or email
info@claremont.surrey.sch.uk



www.claremont-school.co.uk

Subcommittee which covers the Dittons, Weston Green, Hinchley Wood, Esher and Oxshott. I also serve on the Overview & Scrutiny Committee, the Audit & Standards Committee, the Heathrow Task and Finish Group and the Information Technology Steering group.

My priorities as a councillor are planning and greenbelt issues, together with assisting the vulnerable.

I have lived in Hinchley Wood since 1997 and been Chairman of the Hinchley Wood Residents' Association and involved with the local scouts as an adult selector. I am now semi retired after a career in accountancy and recently joined the Finance Panel at the Princess Alice Hospice in Esher and a London Livery Company. I like to travel and enjoy long distance walking and recreational skiing. I am married with three daughters and five grandchildren.

I will be standing for election as a Residents' Association Councillor for Hinchley Wood and Weston Green in the May election. I very much hope to be elected to serve the new ward.

Janet Turner



For the last 21 years I have had the privilege of serving as a Hinchley Wood Residents' Association Borough Councillor, and also as the Mayor of Elmbridge.

As a Residents' Association candidate in the forthcoming elections I am seeking your support on 5th May 2016.

Over the years I have served on all of the committees at Elmbridge Council. When the Residents' Association had the balance of power I held the portfolio for Leisure and Culture. In this role I was responsible for the development of the Xcel Leisure Centre, which I am very proud of. I have sat on the Planning Committees for many years and also chair the Countryside Committee that looks after our commons. I have also served as Chairman of the Overview and Scrutiny Committee. This is a demanding post which looks at all areas of the Council. It was a tremendous honour to be elected as Mayor of the Borough. I met so many wonderful people, it was an experience I and my husband will never forget. I have also been a Governor of Hinchley Wood Primary School for 18 years and served on the working group for the Friends of Thames Ditton Hospital.

My priorities in the coming year will be to protect the Hinchley Wood and Weston Green boundaries. To protect allocations for services for the elderly and vulnerable. To hold the administration to account for the effective delivery of essential services and to maintain Hinchley Wood as a viable shopping centre.

I have lived and worked in Elmbridge all my life, the last 35 years in Hinchley Wood. My interests include my family- I have a daughter and a son and three grown up grand daughters of whom I am very proud. My husband and I lead healthy cycle rides in and around Elmbridge to promote a healthy life style and I still like to keep in touch with the local Girl Guides and Scouts. Cooking, reading, sewing and gardening are a must, and if there is time we like to go on cycling and skiing holidays.



Brighten up your Garden!

Is your garden in need of a makeover?
From planting plans to a simple injection of colour

Green Room Garden Designs can help
020 8398 5703

Anna 07801 921166 – Kate 07956 641881
RHS and Merrist Wood Qualified

R P Brown

Est. 1968 – Traditional, reliable,
and conscientious local plumber

Registered with the Institute of Plumbing
and Heating Engineers

Approved member of Surrey C.C.Trading
Standards 'Buy with Confidence' Scheme

*No call out charge and no minimum charge,
free written estimates,
one year parts and labour guarantee,
full public liability insurance.*

Tel: 020 8398 0207

Mobile: 07973 636672

56 Speer Road, Thames Ditton,
Surrey KT7 0PW

www.plumb-master.co.uk
e-mail info@plumb-master.co.uk

Counselling Service

I offer a friendly and professional
counselling service for those
experiencing a variety of concerns
such as depression, anxiety and
relationship issues.

I can help you move forward into a
more positive place in your life.

Call Jo on 07583 404735 or email
jospoonercounselling@yahoo.co.uk



shop **signs** van **signs** window **signs**
for sale **signs** sticker **signs** frosting
warning **signs** banner **signs** plaques
display **signs** posters **and** more...

flyingcolours call 020 8398 1770

Bee Inspired



Colourful Bee Keepers - Alison and Diane

Twenty years ago Alison Derrick had an allotment on the Hampton Court Way. It was here, by chance, that she met Tim Lovett along with members of the Kingston Beekeepers Association. Tim gave Alison her first bees, a nucleus of four frames which she put into a hive. They were feisty bees which produced a prolific honey crop.

Alison and her friend Diane now have three hives on Littleworth Common and Alison's thriving business BeeInspired is based in Thames Ditton. It grew from their passion for bees and bee products which Alison turns into face and body creams and other products with the honey and beeswax.

Although bees are rarely seen in winter they are not inactive and there will be approx. 5,000 bees in a hive including one queen and female worker bees. The bees only leave the hive if the temperature rises above 10°. In spring, as the days lengthen, the queen starts laying around 1500 eggs per day, each into a honeycomb cell, so

that by summer there will be 60,000 bees in the hive including drones (male bees).

The eggs hatch into larvae which are fed by the worker bees and then sealed with beeswax allowing the larvae to pupate. After 12 days a female worker bee emerges. At first their role is to housekeep; cleaning out cells, feeding the larvae, making wax, compacting pollen and creating the honey. After 21 days they

leave the hive to collect nectar, water and pollen. Worker bees live for only six weeks in the summer months.

The queen can live for five years but only flies once to mate and the second time to form a new colony (swarm). Any egg can become a queen if the worker bees form a larger cell and feed the larvae protein rich Royal Jelly, this can happen at any time if a queen dies.

Alison and Diane tend the bees all year round. In autumn after extracting some but not all of the honey (bees need some for food) they gradually reduce the frames and boxes. The bees are checked regularly over the winter and fed sugar syrup if necessary. In the spring they add more boxes which are stacked so the queen can crawl between the layers to lay more eggs. Later, they introduce a "queen excluder" which restricts the queen from accessing the further boxes added for honey collection and storage. This allows the smaller worker bees access but not the larger egg laying queen.



Backache?

Osteopathy
Acupuncture
Chiropractic



Neck and Shoulder pain?

It is common, not normal.

Book a free 15 minute consultation before the problem gets worse

Clinics in Thames Ditton & Kingston
020 8786 6367 www.spinaljoint.com

7 Lime Tree Avenue KT7 0NA



SpinalJoint

Bees naturally want to swarm, to divide and increase the species. A swarm happens when the existing queen and the older pollen and nectar collecting bees leave the hive to create a new colony. At this time the bees are at their most placid and although a somewhat scary sight they are docile. The queen will only leave the hive having left new queens developing to replace her.

To prevent swarming, beekeepers manage their hives by removing the larger queen cells. In the spring and summer the bees fill the frames in the boxes with honey and once capped with beeswax it's ready to eat, any earlier and the honey will ferment when stored.

In September the honey is extracted, this is done in the evening when the bees are less active. The frames are spun to separate the honey from the comb, lightly strained and bottled. Honey is the only foodstuff which never 'goes off' even though legislation insists a 'use by date' is written on the label.

Alison and Diane sell the 'raw' honey in jars, it has no additives. It's thought to be especially beneficial to hay fever sufferers as consuming honey derived from local nectar with traces of pollen helps build up immunity.

Alison uses the honey and beeswax to produce creams, balms and soaps. She adds only natural oils (to blend), water and essential oils. True to her belief of being additive free the essential oils are chosen for the natural healing benefits they bring. Geranium and orange (to lift the spirit) is good for combination skin and hormone balance. Jasmine and rose are great for mature skins and bergamot for oily skins-it's spicy scent is popular with men and women.

Alison uses lavender, jasmine and tea tree oil in her foot cream which is good for

fungal problems and her new propolis cream (bee 'penicillin' - a substance the bees use to 'stick' and protect their hive with) will be ready for sale soon. It has antibacterial, antimicrobial and anti fungal properties.

All the products have to pass rigorous testing before being licensed by a chemist for sale.

BeeInspired products can be bought online at www.beeinspired.net or at the Thames Ditton Farmers' market.

Kingston Beekeepers Association, www.kingstonbeekeepers.org.uk offers introductory courses at Esher College and at the apiary on Hampton Court Way allotment site and the BBKA website www.bbka.org.uk/learn/gardening_for_bees has much information for planting ideas, how to create bee friendly gardens and much more.





simon simpson

BA(Hons) MSc MAREBT BABCP UKCP MNRHP

Cognitive Behaviour Therapy
Clinical Hypnosis



Registered with Bupa
and all major insurance
companies

Expert, confidential treatment for:

- Panic
- Workplace Stress
- Low Self Esteem
- Insomnia
- OCD
- Depression
- Anxiety
- Irritable Bowel Syndrome
- Phobias
- Anger

clinics in Esher, Hampton Court and at The London Bridge Hospital

full details at: www.cbt-surrey.co.uk tel: 07801 450 477

NEIL EVANS

HEATING & PLUMBING SERVICES

Repairs • Parts • Bathrooms • Boilers • Gas • Plumbing

Local Qualified **PLUMBER** and **GAS SAFE** Engineer



www.neilevansplumber.co.uk
email: neil@neilevansplumber.co.uk
messages: 020 8398 4259 • mobile: 07906 412 170



THAMES DITTON UNITED REFORMED CHURCH

Speer Road – close to Thames Ditton station

Services at 10.45 on Sundays

Secretary: Mrs Linda Lambert

Tel: 020 8398 1476 – Email: lindanmlambert@aol.com

WELCOME TO ALL

Find us at <http://www.tdurc.org.uk>

Hall bookings telephone: 020 8224 6396



Miss Madge McIntosh Blooms and Fades



had lately starred as Vivie, the daughter to whom Mrs Warren reveals the shocking truth, in the London première of Mrs. Warren's Profession, no less - "*An Unpleasant Play in Four Acts, by Bernard Shaw*". Naturally, I was hooked.

Her story is suffused with poignancy, but began well enough. Margaret "Madge" McIntosh was born in Calcutta on 8 April 1875. Her parents, civil engineer Alexander Rankin McIntosh and Hughina McIntyre Fraser, had married in Rome on the way to India the year before. Madge had at least one sister. By the 1891 census when she was 16, she was staying with her sister and cousin at her relative Henry M McIntosh's London address, 7 Porchester Square in Paddington. It was said that silk

Researching the many entertainers, mostly the journeymen and women of their profession, who frequented the village in the golden age of theatre and music hall, my attention, was caught by a snippet in *The Stage* of 27 July 1905: "*A Pastoral Play has proved attractive lately at Thames Ditton. Miss Madge McIntosh and company gave a highly successful performance of As You Like It on July 20, in aid of the Thames Ditton Cottage Hospital. Miss McIntosh was ably supported by an admirable company.*" Now Miss Madge McIntosh

petticoats benefitted a stage career, and we can assume from the presence of a cook, parlourmaid and French nanny that the McIntoshes had a shilling or two. A month after the census, her father died in Calcutta at the age of 51. Madge's mother died much later in Richmond, December 1923.

Where she trained I do not know, but at the age of about 18 she joined Edward Terry's theatre company in London, which toured Britain and Ireland, and with good reviews ("inimitable grace and versatility"....) she began to take leading roles.

RUSSELL-COOKE | SOLICITORS

We can offer you high-quality specialist advice on most legal matters, personal or professional - from employment-related issues to property transactions, wills and estate planning, relationship breakdown and the care and protection of the elderly.

+44 (0)20 8546 6111

www.russell-cooke.co.uk



Brittain Hadley is an independent and professional firm of Chartered Building Surveyors offering the following services:

- Residential Surveys and RICS Condition Reports
- Project Management of refurbishment, new build and extensions
- Party Wall Awards
- Planning applications for residential and commercial premises
- Architectural drawing and design services
- Specification of works and building contract administration
- Dilapidations acting on behalf of landlord or tenant
- Advisors on sustainability matters

Tel 020 8742 7704 E-mail info@brittainhadley.co.uk
1 Claremont Road, Surbiton, Surrey KT6 4QR

Madge in love

I was lucky to find in a rather excruciating “forgotten book” (*From The Wings – The Stage Cat*) a vignette of the young Madge on tour with Terry’s company: *“She had already had a good deal of experience of the stage, and had very clear ideas about the value of that experience and her position in the company. Her voice and elocution were as perfect then as they are now, and she showed certain promise of developing into the fine actress she has since become. She was a good dancer, too; she had been trained in stage dancing, which is probably why she moves so gracefully, and her stage curtseys were my envy.....”* on tour in Cork, Ireland: *“I slept soundly, until suddenly awakened in the morning by a hollow groan and a voice saying, ‘Oh, God! I wish I was dead! ‘It was Madge, sitting up in her bed with a face of the deepest misery. I thought that something dreadful must be the matter, but it was only that she had left behind in the last company someone*



with whom she thought she was in love, and she was sure, therefore, that her heart was broken; though before many days had passed she began to realise that there were lots of interesting things left in the world – including other men! Dear Madge! She always did feel things intensely. The artistic temperament, I suppose.”

Not long after, in the autumn of 1898 Madge married a dapper, handsome well-known actor five years her senior, William Graham Browne. Some six months later she appeared with him in a Granville Barker play staged by Terry’s company: “The Weather Hen” (*“A fresh and interesting treatment of what is a woman to do who has foolishly married the wrong man”* – The Times. *“Rather crude and more or less unpleasant”* - The Stage). Our “Stage Cat” comments: *“The Weather Hen was, of course, the heroine, beautifully played by Madge Mcintosh, who swayed round with every wind, first deciding that she had the right to live her own life and leave an utterly despicable husband a vividly drawn character”*

Married years

I am afraid that the theme was to have future echoes. However, for now the couple starred in several London plays and it was in January 1902 that Madge took a leading role as Vivie in the première of “Mrs Warren’s Profession”, which, after being censored for eight years before its eventual staging, took London by controversial storm with its treatment of prostitution. London critic Eveleigh Nash wrote: *“Miss Mcintosh was fully equal to her task. She did her best to ...kindle every little spark of womanhood into flame. Her performance betrayed great study and a carefully planned conception of a part ...the play was admirably cast from first to last.”*

Karen's Angels

The All Needs Carers



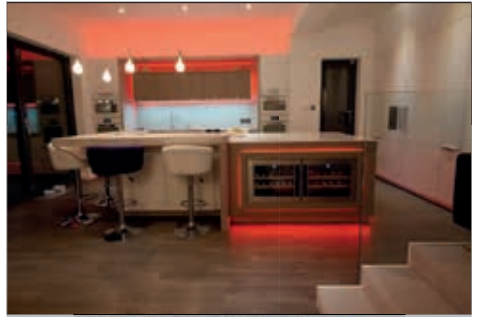
Karen's Angels is a friendly local care company, operating in Surrey.

We provide professional 24 hour care, social and personal care services.

We are very proud of the excellent reputation we continue to achieve with our customers, their families, local authorities, GP's and DN's.

For further information please contact

Karen/Andrea
02082247848
07760220604



MOORE
By Design

PROFESSIONAL KITCHEN DESIGN

The Hersham Centre, Hersham

T: 01932 379076

New online gallery with 150 images...

www.moorebydesign.co.uk

A centre dedicated to
holistic
& complementary
healthcare for all

 **kent clinic**
of natural medicine

We offer a range of therapies that will effectively treat a variety of problems. One of the many therapies we offer is Gestalt Therapy...

Are you feeling unappreciated, alienated, misunderstood, overwhelmed by negative feelings? You feel like nobody is listening and nobody cares?

If any of these emotions feel familiar, contact Melanie Friedrich. Gestalt Therapist working towards accreditation is offering therapy/counselling sessions for any age group in the Kent Clinic of Natural Medicine. Play Therapy offered for children.

(Integrative) Gestalt Therapy has a holistic approach which means that it deals with the whole of the client's experience, including feelings, thoughts and actions. It focuses on gaining an awareness of emotions and behaviours in the present rather than in the past. The goal is for clients to become aware of their immediate needs and how to meet them and also to learn to accept and value themselves.

Tel: **07450 056 356** Email: **melanie.friedrich@gmail.com**

Above Kent Chemist, on 2nd Floor, 104 Walton Road, East Molesey, Surrey KT8 0DL

The consternation in polite society prompted an aggressive defence by George Bernard Shaw which is still a rattling good read. Madge didn't play in the subsequent Broadway première of *"The most shockingly immoral dialogue ever publicly repeated....the words, suggestions - the whole rotten mess of immoral suggestions - have no place on the public platform"* in the words of one US critic. Needless to say, the play was a sell-out in New York and caused traffic problems as carriages queued round the block.

It was probably about that time that Madge and her husband, who had been based at 145 Hammersmith Road with her mother (I think), rented Laurel Cottage in Thames Ditton. By a process of elimination, there being two Laurel Cottages here at the time, this is almost certainly the one in the High Street that still bears the name. Their stay lasted just a few years (there are traces in 1904-1905 but the couple were often on tour).

The strains of separate touring, Madge to the antipodes in 1907, William to the USA shortly after, were too much for the marriage to stand. William had an affair with another actress on tour, Mary Susan Etherington, better known by her stage name of Marie Tempest, who became "the queen of her profession." She was nine years older than Madge, to boot. In July 1909 Madge, back in Britain, petitioned the courts to restore her conjugal rights. The judge ordered William to return home and awarded costs to Madge. Thanks to the New York Times of 24 October 1909 we know that William was having none of it. He wrote to her: *"I don't blame you in any way for the fact that our married life has not brought us the happiness we hoped. It appears that we have been unsuited for*

each other - we ought not to have married. The whole thing was a mistake..." The subsequent decree nisi cited grounds of his adultery in America and his desertion of Madge by non-compliance with the court's decree. William was also reported to have stayed in an hotel in Tonbridge with "a lady who was not his wife." It was, of course, the popular star Marie Tempest – who would, eventually, make William her third husband in 1921 when her second one died.

The play's the thing

1911 found Madge ("actress, single") living in a four roomed apartment just off Regent Street, and again touring Australia, in Maeterlinck's *Blue Bird*. In interview with the West Australian it's hard to escape Tempestuous undertones: *"I have been starred, as the leading actress, and my name blazoned forth. No, I have nothing to complain of from that standpoint, but still, I honestly disapprove of the system of starring. It is bad, especially from an artistic standpoint. The system is carried to ridiculous extremes in America, where the individual is eternally put forward and not the play. Yes, it is far worse in America than it is in England. Mind you, I don't mean to contend for a moment that personal popularity does not count for anything on the stage. It does, but the following which could be attracted to a theatre where a favourite actress was appearing is not an appreciable quantity, and would not make a poor play a profitable one."*

After a period producing and acting at the Glasgow Repertory Theatre, Madge became coordinator of the small team who ran the Liverpool Playhouse from the outbreak of World War I. With enlistment in the offing, the theatre Board gave a fortnights notice on all contracts, whereupon the employees took on the theatre as a collective, the

Retired Police Handyman Service



A network of trusted and reliable retired police officers who provide high quality handyman services to families, individuals and businesses in Thames Ditton & Surrey

CURTAINS | BLINDS | SHELVES | PICTURES | FLAT-PACKS
PAINTING | TILING | GUTTERS | DRAINS | LIGHT FITTINGS
DRIPPING TAPS | JOINERY | CARPENTRY | GRAB RAILS & OTHER ODD JOBS

CALL TODAY FOR YOUR FREE QUOTE **0800 255 0 255**

www.trustinblue.com

Blue

Hand crafted silver and gold by an acclaimed master silversmith

Stunning bespoke gold,
silverware and jewellery, by
acclaimed master silversmith
Bernard Leon.

Peerless, exquisite hand crafted
finery, individually created on the
premises and totally unique.

ASSIMI

54 High Street, Thames Ditton
Telephone: 020 8972 9500



Commonwealth Theatre Company. During this period her reputation in both serious drama and satire was firmly entrenched within the profession. After the War she also played an active part as a delegate of the Actors' Association, lobbying theatre managers in London's West End for better wages and payment for rehearsals, and other fair terms. She produced plays for charity fund-raising as well, including for a new extension to Bedford College.

In 1922 we see the dedicated side of Madge again, as producer for all the plays put on in London by a new venture. The Times reported: *"The rents of theatres, equally with the salaries of the star artistes, are absurdly high, and the general tendency has been in consequence to make the play itself a matter of secondary importance. The venture represents an intention of the part of a number of reputable actors and actresses to get back to the real business of dramatic art, and affirms their belief that there is still a limited public which wishes to see good acting."*

It does not seem to have made a lasting mark on the theatregoing public.

Final curtain

In later years Madge's star waned. She had maintained contact with George Bernard Shaw, in a number of whose plays she had been cast, and in 1933 wrote to him asking for a part in a new play he was writing. He replied somewhat testily on a postcard: *"Dash it all, my dear Madge, don't you realize that the moment a word is breathed of a new play everyone who has ever spoken a line of mine demands a part? I am one: they are many: how can I answer them all, or even the extra special ones like you? I'm afraid there's nothing that would fit you this time..."*

Poor Madge! At least she had the satisfaction of outliving her ex-husband, who died in 1937, as well as the star comic actress who stole him, who died in 1942. But Marie Tempest's shadow was long indeed. In later years, she too worked for the members of her profession and in 1934, she was instrumental in founding the actors' union Equity, when she hosted a dinner for stars at the Savoy. On 28 May 1935, Tempest's golden jubilee was celebrated with a benefit performance at the Theatre Royal attended by King George V and Queen Mary. She was made a Dame of the British Empire.

Madge died undecorated in St. Albans, near to her relatives, in February 1950. Five sentences of obituary in *The Stage* were her last review before this one. On coming across these researches, a relative posted to my genealogy thread online: *"Great Aunt Madge (Margaret) McIntosh ... left a concertina and opera glasses to my grandmother and a leather case to my grandfather. We still have the former. It is a family story that she played the concertina in front of George Bernard Shaw who was unimpressed with her playing."*

I must say that I took to Miss Madge McIntosh. It's fitting that the last word should be that of "Stage Cat" who accompanied the young Madge on tour:

"What fun she was, and what an absolutely good sort."

Anybody would be happy with such an epitaph. Beat that, Marie.

Keith Evetts

Solution to the Winter Crossword

by Michael Jackson



P	A	D	D	L	E	S	T	E	A	M	E	R		
R		E		A	A		X		I		O		E	
E	T	C	H	I	N	G		T	Y	N	W	A	L	D
F		O		R		A		E		C		S		I
E	R	R	E	D		C	O	N	C	E	R	T	O	S
C		A				I		T		M				O
T	I	T	I	V	A	T	E		T	E	N	P	I	N
		E		E		Y		H		A		I		
T	U	D	O	R	S		F	A	N	T	A	S	I	A
H				B		I		N				T		R
E	X	P	L	A	I	N	E	D		F	E	A	S	T
T		E		L		T		I		E		C		J
M	A	R	M	I	T	E		C	A	N	T	H	U	S
S		C		S		R		A		C		I		T
		H	Y	M	E	N	O	P	T	E	R	O	U	S

Congratulations to the senders of the first three correct entries opened in the shuffle. Each wins a £5 voucher to spend in local shops.

Gillian Rodrigues
9 Lower Green Road
KT10 8HE

Susan Howarth
104 Summer Road
KT7 0QP

J Dunstone
57 Warwick Gardens
KT7 0RB



Alan Greenwood & Sons Independent Family Funeral Directors

www.alangreenwoodfunerals.com



Our Commitment is to Provide a Personal and Caring
24hr Service in a Dignified and Professional Manner

- A choice of the latest Jaguar or Mercedes Hearses and Limousines
- Horse drawn funerals
- Classic and Vintage Hearses
- Home visit arrangements
- Pre-paid funeral plans
- Memorials and monumental masonry
- Very competitive charges

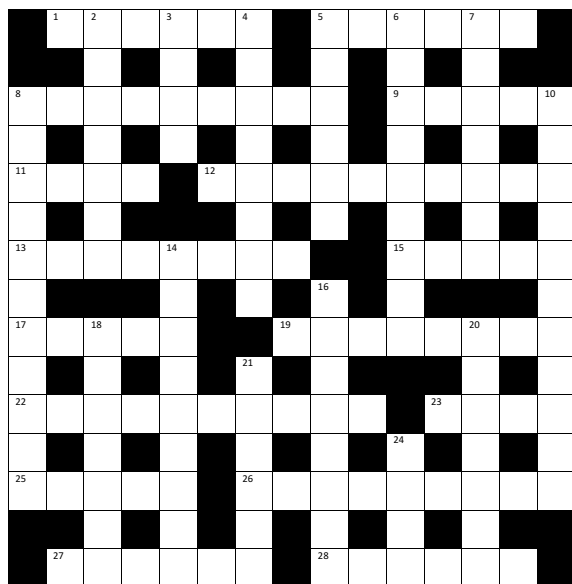


57 Fleece Road, Long Ditton, Surrey KT6 5JR
1 The High Street, Claygate, Surrey KT10 0JG
13 Molesey Road, Hersham, Surrey KT12 4RN
259 Ewell Road, Surbiton, Surrey KT6 7AA

Tel: 020 8398 0012
Tel: 01372 377 377
Tel: 01932 260 046
Tel: 020 8399 4455

Spring Crossword

by Maureen Wilcox



The first three correct entries randomly opened after the closing date 6 May 2016 will win a £5 voucher to spend in local shops.

Please send the completed puzzle (or photocopy) enclosing your name and address, with the envelope clearly marked ‘Crossword Competition’ to:

Thames Ditton Today
Crossword Competition
24 High Street
Thames Ditton
KT7 0RY

ACROSS CLUES

1. This clue has only one answer (6)
5. A computer suitable for travellers (6)
8. If Ed is sat comfortably, he'll be pleased (9)
9. Surely a favourite Royal tippie if stirred! (5)
11. A culinary temperature setting (4)
12. Settles a question conclusively (10)
13. This duo enhances a certain beverage (5,3)
15. An unabridged performance (5)
17. What a meal to eye with pleasure! (5)
19. A baby conceived by IVF (4,4)
22. Have respect for this senior fruit (10)
23. An object of great devotion (4)
25. Have a sleepover here, but pay for it! (5)
26. Widespread in certain areas (9)
27. Robin says more than this one (6)
28. Elicit help to hang tinsel at Christmas (6)

DOWN CLUES

2. The meantime (7)
3. The main point of a speech (4)
4. One does not need vice to prove a point in court (8)
5. Pays to live with an owner (6)
6. This is of the greatest importance (9)
7. Relating to living matter (7)
8. Local provider of necessities (6,5)
10. Completely miss the point (4,3,4)
14. Obviously one expects aunt to rally round (9)
16. A domesticated breed bred to do so (8)
18. Is qualified to inspect a firm's accounts (7)
20. Do this at a match and get a chilly reception! (7)
21. Should you lose it, don't look for it! (6)
24. Correct if you hit this on the head! (4)

SERVICES, GROUPS, CLUBS, AND SOCIETIES

SERVICES

Cheer (Concern and Help for East Elmbridge Retired)	Harry Livesey	01372 879321
Dittons and Weston Green Neighbourcare	Avril Ashworth	020 8398 7521
Elmbridge Borough Council Community Support Services		
Thames Ditton Centre for Retired People	Mon & Thurs	020 8398 5921
Thames Ditton Children's Centre	Tues, Weds, Fri	0208 3983772
Meals on Wheels, Community Transport, Dial-a-Ride, Alarm & Telecare services, Relief Carers	ask for service at central switchboard	01372 474474
Homesupport Elmbridge	Pam Howard (Manager)	01932 267128
Esher and District Stroke Club	Ann Pollock	020 8398 6132
Voluntary Action Elmbridge	Sally Dubery	01372 463587
Surrey Youth and Adult Education Service	Elmbridge Area	020 8979 8334

GROUPS

Girl Guiding in TD & WG	Mrs K Williams	020 8398 1300
1st Thames Ditton Brownies	Mrs. Bronach Hughes	020 8398 1628
3rd Thames Ditton Brownies	Deborah Daoud	020 8398 5521
2nd Thames Ditton Rainbows	Alexandra Lyall	07779 616463
1st Weston Green (All Saints) Scout Group	Carole Needham	07975 842423
1st Weston Green Guides (All Saints)	Mrs. Louise Lewis	020 8398 4843
2nd Thames Ditton Guides	Mrs. Bronach Hughes	020 8398 1628
1st Weston Green Brownies (All Saints)	Mrs K Williams	020 8398 1300
2nd Weston Green Brownies	Mrs J Epps	020 8395 0595
1st Weston Green Rainbows	Mrs Helen Hill	020 8398 3135
4th Thames Ditton Ajax Sea Scouts	Alison Derrick	020 8398 0041
Dittons Scout Group	Laura Clarke	020 8398 3447
Coffee and chat (United Reformed Church)	Mrs. E. Barker	01372 467491
Emberbrook Trefoil Guild	Mrs. Adrienne Nealing	020 8398 5582
Friends of Bushey and Home Parks	Jean Smith	020 8977 9391
Molesey and Dittons Neighbourhood Watch	Chairman: John Haberfield	020 8398 5256
Parents and Toddlers(St Nicholas church)	Information	020 8398 7211
Ripieno Choir	Nick Harris	020 8399 7231
Surrey Bell-ringers	Nick Pattenden	Nick.Pattenden@cassiopae.com
Thames Ditton Villagers	Mark Badcock	07941 948177

CLUBS

Albany Motor Yacht Club	Secretary	01784 466651
Arts and Heritage Club	Carol Butcher	01932 867511
Claremont PROBUS Club	Mr. P. Collins	020 8398 3125
Claygate Bridge Club	Hon. Secretary	020 8398 1710
Colets Health & Fitness	Giordano Orsini	020 8398 7108
Dittons Skiff and Punting Club	Hon Secretary	07710 139417
Dittons & Hinchley Wood Royal British Legion	Hon Secretary	020 8398 6263
Ember Players (Drama) Ember Sports Club	Anne Segall	020 8941 4528

Ember Sports Club	Zenda Hedges	020 8398 7038
Ember Sports Club: Bowls	Sylvia Jones	01932 788701
Ember Sports Club: Croquet	Dr. David Cooke	01932 862841
Ember Sports Club: Tennis	Annabel Duncan	020 8786 6318
Esher Bowling Club	Roger Cooper	01372 468109
Esher Bridge Centre	Paul Whicker	01372 460157
Esher Camera Club	Billy Buchanan	020 8398 3169
Esher 41 and Ex-Round Tablers' Club	Dr. R. Tudor-Williams	020 8398 0108
Folk Dance Club	Pam Phillips	01372 373745
Hinchley Wood / Dittons PROBUS Club	Geoff Francis	01932 867771
Long Ditton Cricket Club	Nigel Hardy	020 8398 8361
Long Ditton Garden Club	Heather Harvey	020 8398 2642
Model Railway Society (Hampton Court)	Secretary	01932 241224
Mothers Union (All Saints)	Mary Redington	020 8398 1189
Old Cranleigh Rugby Club	Tony Price	07801 837129
Old Cranleigh Hockey Club	Simon Marshall (Men)	07801 737695
	Helen Hawes (Ladies)	07771 557900
River Club (BMYC)	David Walker	0870 460 3586
Rotary Club, Esher	Geoff Morris	01932 868454
Robber Bridge TD Lawn Tennis Club	Val	020 8399 9972
Surbiton Croquet Club	Alec Thomas	020 8398 2391
Surbiton Golf Club	Secretary	020 8398 3101
Surbiton Hockey Club	Secretary	020 8398 2401
Thames Ditton Lawn Tennis Club	Chris Lewis	07770 562569
Thames Ditton & Esher Golf Club	Mark Rodbard	020 8398 1551
Thames Ditton Squash Club (Colets)	Dave Peck	020 8398 7108
Thames Ditton Cricket Club	Howard Frish (Secretary)	07947 561449

SOCIETIES AND ASSOCIATIONS

Ember Choral Society	Linda Bridges	020 8399 5402
Esher Recorded Music Society	Miss S. M. Garrat	020 8398 8541
Esher and Molesey Garden Society	Chris Walker (Sec)	020 8398 6651
Esher and District Amnesty International	Cherry Eddy (Campaigns)	020 8398 4377
Hampton Court Way Allotment Association	Lettings: Piotr Hennig	020 8398 5358
Long Ditton Youth Club	Toni Izard	07749 633973
Lynwood Allotment Society	Gill Vickers	020 8398 4870
Molesey and District Antiques Society	Linda Lambert	020 8398 1476
NADFAS (Decorative & Fine Arts) Kingston	Mrs. Valerie Windsor	020 8549 9967
Soroptimist International (Kingston District)	Secretary: Pat Harman	020 8390 3507
Thames Ditton Women's Institute (W.I.)	Secretary	020 8398 8615

OTHER

Cancer Research UK	Mrs. Vivienne Harris	020 8398 6787
Elmbridge Fairtrade Network	Judy Porter	020 8398 6401
University of the Third Age (U3A)	Hon Sec Anne Brown	01932 881633
Vera Fletcher Hall	Lettings: Helen Mason	08456 528 529
	Membership: Sue Morris	020 8224 0980

Please contact the Editor to amend these listings

THE THEATRE IN THAMES DITTON AT THE VERA FLETCHER HALL

Friday 18 March 7.30pm

COLIN STONE

Professor of Piano at the Royal Academy of Music, and past winner of Royal Overseas League Piano Competition, Colin Stone brings us the programme for his forthcoming tour of Japan : Schubert F minor Fantasy, Prokofiev Sonata No. 6, Schubert Wanderer Fantasy, Chopin Andante Spinato and Ballade No. 4.

TICKETS £15.00

CHILDREN'S THEATRE

Saturday 19 March 2.30pm

Image Musical Theatre presents

THE RAILWAY CHILDREN

Image Musical Theatre returns with this wonderful adaptation of E Nesbit's classic 'The Railway Children'. When Father is taken away and the family are forced to up sticks and move to a simple country cottage, it is there where they soon fall in love with the Railway. They have many adventures, and when they save a train from disaster, they are helped to solve the mystery of their father's disappearance.

TICKETS £7.00 For ages 5+ years

TICKETS : Purchase online at www.verafletcherhall.co.uk
or Telephone **Box Office on 0845 680 1926**
or Send a SAE with a cheque (to Vera Fletcher Hall Assoc.) to :-
VFH Box Office, 8 Copsem Lane, Esher, Surrey KT10 9EU

For up-to-date news, visit our website above and sign up for our Newsletter.

To hire the Vera Fletcher Hall, contact Fiona Evers : Tel: 08456 528 529

Saturday 23 April 7.30pm

Prospect Theatre Company presents

BECOMING HATTIE

Thoughtful, funny, warm and nostalgic, this one-woman show is an affectionate look at the life and career of the remarkable Hattie Jacques, and a witty, caustic look at modern life in show business.

TICKETS £12.50

Friday 29 April 7.30pm

Commedia Opera presents

CARMEN

With a roar from the bullring, Bizet's masterpiece charges into an evening of compelling entertainment. Sung in English, fully staged and accompanied by The Virtual Reality Orchestra, Commedia Opera make a welcome return with one of the most popular operas ever written.

TICKETS £15.00

Friday 13 May 7.30pm

THE RUISI QUARTET

Winners of the Royal Philharmonic Society award for Young British String Players, the Ruisi Quartet play Haydn String Quartet Op.2 No.2, Wolf Italian Serenade, Britten Three Divertimenti and Schubert Rosamunde.

TICKETS £15.00



Two ways to treat your Pet

To keep them healthy, pets should be seen at least once every 12-months by a vet. So why not bring them along to Beech House, Thames Ditton for their regular health checks. This way, we can detect potential illnesses early and nip them in the bud.

Our easy parking, fresh, modern & involving premises and professional engaging team will greet you each visit, making your whole experience more enjoyable.

Prevention, we think, is better than Cure.

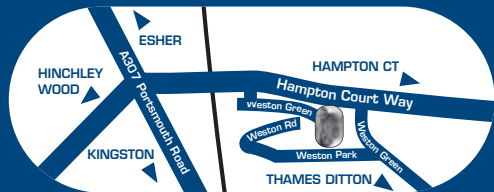
To keep them happy, play with them, exercise them, give them loads of praise and cuddles and spoil them with some special treats and toys. So pop into the "Beech House Pet Stop" for a wide selection of the very best.

(All the products and food we sell have been carefully chosen with your pet's best well-being in mind.)

**Beech House Veterinary Centre -
Passionate about Healthy, Happy Pets**

www.beechhousevets.com

Regular health checks will ensure a longer, healthier and happier life.
**Ring now to book
020 8398 4752**



**Beech House Veterinary Centre,
Milbourne Stores, Weston Green,
Thames Ditton, Surrey KT7 0JX**



Well-Pet Centres also at:

- Hersham 01932 220768
- Cobham 01932 868688
- Shepperton 01932 222257

Consulting Hours
Monday - Friday
9am-7pm

ARIES CONSTRUCTION LLP

GENERAL BUILDING
EXTENSIONS & LOFT CONVERSIONS
FULL PLANNING & DRAWING SERVICES
ROOFING : PLUMBING : ELECTRICAL
BATHROOM & KITCHEN REFURBISHMENT
CARPENTRY & JOINERY
INTERNAL & EXTERNAL REDECORATION
REPLACEMENT WINDOWS & DOORS
INSURANCE CLAIMS : FIRE, FLOOD, STORM DAMAGE
SUBSIDENCE AND UNDERPINNING
PLASTERING & RENDERING
GROUNDWORKS & DRAINAGE
PROPERTY MAINTENANCE



13 Thames Court, Victoria Avenue
West Molesey, Surrey KT8 1TP



Free Estimates – Fast, Efficient, Friendly Service
Local References Available

Tel: 020 8941 9191
Mobile: 07836 608086
www.ariesconstruction.co.uk
Email: aries.construct@hotmail.co.uk