

# THAMES DITTON TODAY

THAMES DITTON • WESTON GREEN • EAST MOLESEY



THE MAGAZINE OF THE  
THAMES DITTON & WESTON GREEN RESIDENTS' ASSOCIATION

A U T U M N 2 0 1 6

# TJBathrooms

**FOR EVERYTHING IN  
LUXURY BATHROOMS  
& SHOWERS**



**Open: Mon to Fri 8am-5pm Sat 9.30am-3pm**

**121 ANYARDS ROAD, COBHAM, SURREY, KT11 2LJ** (Car park to rear of building)

**Tel: 01932 866471 / 868523**

**tjbathrooms@ntlbusiness.com • www.tjbathrooms.co.uk**

**FREE DESIGN & PLANNING SERVICE**

**Also at: 122 SUMMER ROAD THAMES DITTON, SURREY KT7 0QP 020 8398 4324**





# THAMES DITTON TODAY

Published quarterly since 1970

## Editorial Team

Libby MacIntyre & Sandra Dennis  
editor@residents-association.com

## Magazine Design

Guy Holman  
24 Angel Road  
Thames Ditton  
020 8398 8727

## Distribution

David Youd  
6 Riversdale Road,  
Thames Ditton KT7 0QL  
020 8398 3216

## Advertisement Manager

Verity Park  
20 Portsmouth Avenue  
Thames Ditton KT7 0RT  
020 8398 5926

## Contributors

You are welcome to submit articles or images. Please contact the Editorial Team well in advance of the next deadline October 10

## Advertisers

Thames Ditton Today is delivered to an influential 5000 households throughout Thames Ditton, Weston Green and East Molesey. Contact Verity Park for rates for full page, half and quarter page advertising.

## In this Issue:

News from the Residents' Association .....	7
Health matters – Molesey hospital and GP services .....	15
Watching the water – introducing Tony Nockles .....	17
Through an artist's eye .....	19
Weston Green's drop in lunch club .....	23
Secret Gardens reign supreme .....	24
A peal for ringers .....	27
Who'd be a Trustee – maybe you? .....	29
Archiving for the future .....	31
Rogues, vagabonds and sturdy beggars .....	35
Summer crossword solution .....	42
Autumn crossword .....	43
Services, Clubs, Societies and Groups .....	44
The Theatre in Thames Ditton .....	46
Cover illustration: <i>Giles André (see page 27)</i>	

[www.residents-association.com](http://www.residents-association.com)

Officers and staff of the Association are volunteers, but we must fund costs of this magazine, administrative and election expenses, and other expenses such as spring bulb-planting and village Christmas trees. The subscription is only £3 per household. If you can contribute more, please do so. Subscriptions can be paid via our website [www.residents-association.com](http://www.residents-association.com); subscriptions (in an envelope please) may be left at Boots Pharmacy, 14 High Street, Thames Ditton or Thorkhill Road Pharmacy, 94 Thorkhill Road, Thames Ditton. Or mail to Membership Secretary Peter Haynes at 6 Onslow Gardens, Thames Ditton KT7 0JJ. Thank you.

*Thinking of Selling or Letting your property?*

Then why not speak to the local experts,  
our credentials speak for themselves:

- 125 years experience in estate agency
- No.1 on Rightmove
- The biggest market share of sold property on Zoopla
- Six closely linked local offices
- A long standing reputation for honesty and transparency demanding exceptional standards from our highly experienced, knowledgeable staff
- In-house Financial advisor

One of our friendly team is always here to advise you



**Nicola Ashworth**  
Branch Manager



**Anna Jones**  
Sales Negotiator



**Karen Martin**  
Sales Negotiator



**Becca Stoner**  
Lettings Negotiator



**Alison Brown**  
Sales Administrator



**Raj Jandu**  
Financial Consultant



Thames Ditton Residential Sales & Lettings **020 8398 2500**

[www.hawesandco.co.uk](http://www.hawesandco.co.uk)

Offices also at: SURBITON, NEW MALDEN, RAYNES PARK, WIMBLEDON BROADWAY & WIMBLEDON VILLAGE



# RESIDENTS' ASSOCIATION

## About the Association

Founded in 1934 our Association is a strong, locally based non-party-political organisation concerned with protecting the amenities and furthering the interests of residents. We work to preserve and enhance the best in our attractive environment and the quality of life of everyone in our community. Through regular meetings, social activities, our magazine and website we keep in touch with residents' views and we raise and spend funds for the benefit of the community, from tree and bulb planting to contesting unacceptable development projects. With six Residents' Councillors covering the two electoral wards we have a strong voice on Elmbridge Council working with other Residents' Councillors to ensure that decisions are based on the needs of local communities and on good management rather than on party politics.

Our Residents' County Councillors Peter Hickman (TD + WG) and Stuart Selleck (East Molesey) represent our views at Surrey County Council.

**President: Martin Wilberforce**  
7 River Avenue, Thames Ditton  
020 8398 4732

**Surrey County Councillors**  
Peter Hickman, 3 Elmbridge Lodge  
Weston Green Road, Thames Ditton  
020 8339 0931

Stuart Selleck, 2 St. Johns Road  
East Molesey  
020 8979 2466

## Thames Ditton Councillors

Tricia Bland,  
29 Station Road, Thames Ditton 020 8339 0485  
Ruth Lyon,  
11 Riversdale Road, Thames Ditton 020 8398 3396  
Karen Randolph,  
Deepfield, Gigg's Hill Road,  
Thames Ditton 020 8398 5005

## Hinchley Wood & Weston Green Councillors

Tannia Shipley, 'Clinton House'  
27 Lower Green Road, Esher 020 8398 2484  
Janet Turner, 2 Montgomery Ave,  
Hinchley Wood 020 8398 1565  
Nigel Haig-Brown  
53 Heathside, Esher 020 8398 4060

## Officers

Chairman: Rhodri Richards,  
Ditton Cottage, Gigg's Hill Road,  
Thames Ditton 020 8224 5181  
Vice-Chairman: Libby MacIntyre,  
24 High Street, Thames Ditton 020 8398 5534  
Hon. Treasurer: Christa Silverthorne  
62 Thorkhill Road, Thames Ditton 020 8398 7101  
Hon. Secretary: Florian Traub,  
Longmead Road, Thames Ditton 020 8224 2880  
Membership Secretary: Peter Haynes  
6 Onslow Gardens, Thames Ditton 020 8398 6019

## Conveners of Sub-Committees

Health and Community:  
Karen Randolph (see above)  
Planning: Graham Cooke  
23 Ashley Road, Thames Ditton 020 8398 8509  
Highways, Drainage:  
Andrew Roberts, 1 Boyle Farm Road,  
Thames Ditton 020 8786 6882



## The Next Residents' Association Open Meetings are

Tuesday 20 September, Tuesday 8 November  
8 pm, Vera Fletcher Hall, Thames Ditton

**All who live or work locally are welcome**



# WE'VE CHANGED... GREAT NEW FACILITIES NOW OPEN!

- New stylish & luxurious changing rooms
- Upgraded studios
- New functional training studio
- New café bar conservatory & outdoor terrace

**Become part of a great club  
- call now to find out more!**

## CALL NOW TO BOOK A FREE TRIAL\*



\*Terms and conditions apply.

Call now, or come in for a chat.  
**020 8398 7108**

St Nicholas Road • Thames Ditton • KT7 0PW

  
COLETS  
HEALTH & FITNESS  
[www.coletshealthclub.co.uk](http://www.coletshealthclub.co.uk)

# News from the Residents' Association to end-August



## Festive High Street

Thames Ditton High Street looked very festive over the summer. The Union Jack Flags and bunting were hoisted to celebrate Her Majesty the Queen's 90th birthday and stayed up to cheer our hearts through to the end of the Olympic Games.

The celebrations of Olympic success were close to home when Thames Ditton resident and Molesey Boat Club captain, Mo Sbihi, together with fellow Molesey member George Nash, won gold in the men's coxless four. The thrills continued when another Molesey Boat Club member, Andrew Triggs Hodge, also claimed gold in the men's eight.



The High Street had more to celebrate when Paull's Fruit & Veg shop won the category for the best independent grocer/speciality foods for the THIRD year running in this year's Elmbridge Retailer of the Year Award 2016.

The Lime Tree scooped first prize for the SECOND year running in the best restaurant or cafe category.



*Lime Tree staff scoop prize*

And that's not all: Stitchery gifts won the speciality gifts category for the FIRST time, which makes a trio of winners for Thames Ditton High Street in these prestigious awards.



*Stitchery wins speciality gifts category*

Now in its fourth year, the Elmbridge Retailer of the Year awards help to celebrate and showcase the great range of shops and services in the borough.

The flags have now been packed away for the next celebration and our thanks go to everyone involved in making it happen.

## Weston Green Summer Fair

In July Weston Green had a great 'Day at the Seaside' – the theme of the All Saints Weston Green Summer Fair.

Although experiencing a true British summer (with added rain) the fair was a great success. All the typical seaside attractions were there: fish and chips, Punch and Judy show, 'hook a duck', ice cream, candy floss and souvenirs.

The Bake Off (now in its third year) was, as ever, a great success with a record number of entries. The winner of the children's Rock Cake category was India Catford and the overall winner, receiving the prestigious Star Baker Apron, was Laetitia Tribelhorn.



Overall winner Laetitia Tribelhorn

Phillip Johnson, the Vicar of All Saints, said: "In spite of the weather the crowds turned out to enjoy 'A Day at the Seaside' and the rain certainly didn't dampen spirits. It was another great day for the Weston Green community."

Local RA Councillors Tannia Shipley and Janet Turner agreed that it was lovely to see the community getting together to have fun.



Local RA councillor Janet Turner (centre) enjoying the fun of the fair

## Keep Weston Green Clean

The commons at Weston Green are a wonderful community asset. Alas, not everyone treasures them and they are sometimes spoiled by litter. If you can spare an hour or two once a month to keep our commons looking good, please join the Weston Green Litter Pickers. For a chance to meet up with your neighbours and make a difference please contact Councillor Tannia Shipley: [tshipley@elmbridge.gov.uk](mailto:tshipley@elmbridge.gov.uk)





## Sad goodbyes at The Greyhound



Sadly, Lesley and Alistair at the Greyhound pub in Weston Green have decided to close. For some months they have fought a legal battle against eviction by the pub company that owns the building. Despite winning the latest round in court in July they have decided not to carry on. This is a great shame as they had made the Greyhound into a lovely family friendly pub.

## Blooming Marvellous

Commuters at Thames Ditton railway station have been admiring the lovely displays put together in April by Thames Ditton in Bloom. There are plans to extend the initiative to include other areas and Councillor Tricia Bland is in talks with horticultural experts at EBC who are really keen to support it.

Thames Ditton In Bloom will be holding another Community Planting Day in October when they will refresh the planters at Thames Ditton Station with Autumn plants under-planted with Spring bulbs. If you would like help please contact the team at [tdwgra@the-blands.co.uk](mailto:tdwgra@the-blands.co.uk).



## Secret Gardens of Thames Ditton

The 'Secret Gardens of Thames Ditton' event in June was a great success. Read all about it and find out how much it raised for the Garden of Remembrance and the Thames Ditton Lights Appeal on page 24.

## New Manager at Thames Ditton Centre

We welcome Chris Bicknell, the new manager at the Thames Ditton Centre for the Community, opposite the library, where the Men in Sheds project is going from strength to strength.

This summer in addition to the lovely flower planters they made for Thames Ditton in Bloom they were commissioned by Walton Charities to make fencing for their allotments.

## **PAINTERS & DECORATORS**

We are residential painters and decorators with 20 years experience, we offer wallpapering, painting and paint effects for internal and external decorating

We work in a clean and efficient manner, causing minimal disruption in your home and come highly recommended



Contact Clive Hogg  
to discuss your  
decorating needs

**020 8339 0712**

m: 07957 582296

e: [clive.hogg.ch@gmail.com](mailto:clive.hogg.ch@gmail.com)

15 Hampton Court Avenue, East Molesey, Surrey, KT8 0BG

## **SCIENCE TUITION**

### **A Level & GCSE Tuition**

**Biology, Chemistry  
& Physics**

**Tel: 020 8398 7365**

**Alan Tucker:  
2 Gainsborough Close,  
Esher KT10 8JR**

**[alan@asbtucker.co.uk](mailto:alan@asbtucker.co.uk)  
Enhanced CRB**

## **MICHAEL MOULE ANTIQUES**

### ***CONSTANTLY REQUIRE THE FOLLOWING ITEMS***

All Furniture Pre 1920, Silver and Silver Plate,  
Brass and Copper, All Clocks, Porcelain, Bronze  
and Marble Statues, All Paintings, Gold Jewellery,  
Old Dolls, Books, Pewter, Swords, Curios.

### **ANYTHING OLD AND UNUSUAL**

For a fast and friendly service do not hesitate to  
telephone any time, with absolutely no obligation.

### **IMMEDIATE CASH SETTLEMENT**

**020 8398 8072**

**26 Basing Way, Thames Ditton**

## Travellers in recreation ground

Local residents were concerned when a group of travellers set up camp in Summer Road Recreation Ground on 8 August. RA councillors informed the Council's Gypsy/ Traveller Liaison Officer, who visited the site and made an assessment as required under the legal protocol for dealing with unauthorised gypsy/traveller sites (available from the EBC website)

The courts granted an Order for the Removal of Persons and Vehicles and the site was vacated by 15 August. A full clear up was arranged by the council and arrangements are being made to prevent further incursions.

## Planning

On 15 August Elmbridge Borough Council (EBC) confirmed compliance of Condition 5 of Planning Permission for **Weston Green School** (2015/3070) requiring that a Travel Plan be submitted to and approved in writing by the Borough Council (Full details on the EBC website).

The Travel Plan commits the school to carrying out termly surveys and annual monitoring which is to be submitted to Surrey County Council for review. EBC will also be requesting a copy of this data so that the council can be satisfied that the plan is being implemented, monitored and updated as required by Condition 5.

The Residents' Associations councillors and Weston Green residents have put a great deal of time into trying to get an acceptable plan and we look forward to the school delivering on it.

**Esher Tyre and Exhaust** (2016/1963) A planning application has been received for eight flats in a detached two-storey building

following demolition of the existing workshop and store. A previous application (2015/1257) for a terrace of four two-storey town houses was refused last year.

We supported Church Walk residents in their objections to an extension at the **Corner House, Ashley Road** (2016/0999). EBC agreed that the development was too close to the Walk.

The application for change at **6, The Broadway, Thames Ditton** (2016/0660) from A1 Retail to A5 Takeaway (Grilled and fried chicken, chip and similar products) is still under consideration, awaiting amended plans.

A change of use from office (B1a) to residential (C3) has been granted for **13-19 High Street Thames Ditton** (2016/1768) with a number of conditions. The Residents' Association wrote to express its concerns as the Government's permitted development rules are largely contrary to the Government and EBC's planning policies for Conservation Areas, which promote the vitality and viability of town and village centres and state the importance of local employment sites to the shops, pubs and cafes in the High Street.

The RA believes that such a centrally located site would best serve the interests of the village and the community by being a mixed use development.

The RA is not anti-development, but it is important to ensure that any plans are in line with our objectives: to protect local amenities and further the interests of residents. If you would like help to understand the planning process and how you can register objections or support for an application our planning convener, Graham Cooke, is happy to help. Graham can be contacted on 020 8398 8509.

Concerned about the performance of your Personal Pension or Stocks & Shares ISA?

**knightjames**  
Wealth Management

**A friendly, local  
and professional  
service**



Mortgages  
Equity Release  
Investments  
Tax Planning  
Commercial Insurance



**Call: 0208 398 6677 – [www.knightjames.com](http://www.knightjames.com)**

6 Station Road, Thames Ditton, Surrey, KT7 0NR

If you're having an outdoor event call us & let us put you.....

**Undercover  
Event Tents**

We specialise in offering a wide range of marquee solutions to suit any social or commercial event in south east london & surrey

Phone: 0208 398 7219  
Mobile: 07864 585 181  
email: [undercover.events@yahoo.co.uk](mailto:undercover.events@yahoo.co.uk)  
web: [undercovereventtents.co.uk](http://undercovereventtents.co.uk)



## Vegging out

Saturday 13 August saw St Nicholas Church Hall filled with the scent of flowers, home-baked pies, jams and chutneys and a dazzling array of locally grown vegetables. The Esher & Molesey Garden Society event also did a roaring trade in teas, cakes and raffle tickets. Entries were a little down on previous years – it could be that tricky weather again – so organiser Madeleine Hern is encouraging everyone to have a go in next year’s show – call 0208 398 0709 for queries.



## Grass cutting

Councillors have received a number of calls from residents concerned with the quality of the grass cutting on public spaces in our area.

They have followed up the matter with EBC’s Head of Leisure, Ian Burrows, who said: *‘We are aware that the maintenance of our grass verges has recently not been to the standard that we would expect and needs to improve. The Council continues to work closely with the contractor to ensure that the standard of the verges is brought back to the levels expected by our residents*

*and to this end additional resources are being brought in to the Borough during August. The Council works hard to ensure that the Borough is a green and attractive place in which to live and work.’*

## The Home of Compassion opened



*The grand opening*

The Home of Compassion at the heart of Thames Ditton was formally opened in June by TV and radio presenter Angela Rippon, assisted by the Mayor of Elmbridge, RA Councillor Tannia Shipley, the home’s first resident, Patsy Herrod, and Founder Director of Caring Homes, Helena Jeffery.

The afternoon event, held on the home’s Thameside lawn, was attended by about 130 people, including neighbours, representatives from local businesses and Home of Compassion residents and their families. It was reminiscent of the summer garden parties that many of us remember.

Mayor Tannia Shipley summed up the feeling of local residents when she said: *‘We are all so pleased to see the Home of Compassion re-open and become part of the Thames Ditton Community once again.’*

## St. Leonards Road car parking

Our County Councillor Peter Hickman has taken up the problem caused by increasing numbers of cars parking along St. Leonards Road up to the junction with the High Street.

In September the results of the public consultation will be published and we look forward to action and perhaps some yellow lines to help traffic flow on this busy stretch of road.

## Thames Landscape Strategy

Congratulations to Peter Hickman, who was re-elected in June as Chairman of the Thames Landscape Strategy, the organisation conserving and enhancing the Thames between Weybridge and Kew, with Sir David Attenborough as Founding Patron.

## New Residents' Association noticeboard

The Association has a new noticeboard on a prime site outside Paull's Fruit and Veg. Look out for our latest news...



## Dates for your diary

**Farmers' Market** Saturday September 24, Saturday October 22  
& Saturday November 26, George and Dragon car park from 9-1pm

**Through an Artist Eye Exhibition** All Saints Church Weston October 8-29

**High Street Christmas Fair** Sunday December 4

[Residents-Association.com](http://Residents-Association.com)

## Subscriptions

Don't forget your annual Residents' Association subscription, if you haven't already paid this year. It can be as little as £3. Subscription funds are vital for the running of the Association, and to produce this magazine – especially important now with our larger area of coverage following the ward boundary changes earlier in the year. The most convenient way to subscribe is online: Go to [www.residents-association.com](http://www.residents-association.com) and click on Subscribe. You can either pay online, or by cheque/cash using the printable subscription form. Your support is much appreciated

# Health matters – Molesey hospital and GP services



## **Molesey Hospital is reprieved.**

Many residents will be aware that Surrey Downs Clinical Commissioning Group (CCG) has undertaken a review into Community Hospital Services. Two of the four options which were put out for consultation included the closure of Molesey Community Hospital, with outpatient and inpatient services transferred to a variety of locations.



Thanks to fantastic support – both in quality and quantity – from local residents, especially those attending the meeting held in March (jointly organised by TD&WG Residents' Association and Molesey Residents' Association), Surrey Downs CCG has decided not to close Molesey Hospital.

Particularly encouraging is that the CCG, unlike its predecessors, has recognised that this particular ball cannot be kicked down the road again. Together with NHS Property Services they will be conducting a feasibility study with the intention of developing and enhancing the current Molesey hospital site – something which

local Residents' Association councillors have pushed for.

This is only a beginning and much rests on the co-operation of a number of different parties, local as well as national including primary care providers, but there may be reason to hope that community – and primary – health services for local residents will now be developed and improved and brought into the 21st Century.

## **Friends of Thames Ditton Hospital (at Emberbrook).**

The Friends are delighted to announce that, jointly with the Friends of Molesey Hospital, they have been able (at a cost of £30,000) to replace the very well-used, but worn out, Ultra Sound unit at Emberbrook Health Centre. The Ultra Sound clinic is run 2-3 days a week with occasional added clinics when demand requires such as in June/July this year when it was 4 days a week. Jackie Jenkins from Surrey Ultrasound Services which runs the clinics says that the new equipment is '*amazing...far faster and with much improved resolution.*'

## **GP services at Giggs Hill and Glenlyn surgeries**

Patients at these two practices will be aware that the surgeries have been brought under the same organisation in an effort to manage, amongst other things, the fall out arising from the drastic reductions in funding imposed centrally. The consequent financial pressure has had a particularly significant impact on these two practices.

In late 2015 and early 2016 the very high volume of complaints, from a variety of sources, prompted the involvement of NHS England (which still commissions GP services in this area), Surrey Downs Clinical Commissioning Group (CCG) and an inspection by the Care Quality Commission (CQC) in January 2015.

It will be no surprise to patients of the two practices to hear that a range of issues were identified. These included, amongst other things, inadequate GP capacity, lack of sufficient GP appointments (with associated risks to patient safety), shortages of other clinical personnel, concerns with leadership and the senior management team, issues with repeat prescribing policy, staff not being aware of changes within the practice and a lack of communication and engagement with patients.

A subsequent review by NHS England and Surrey Downs CCG in April identified that *'The Practice had made considerable progress. The review team particularly noted the actions taken to embed the new operating model [put in place at short notice following the merger with Glenlyn] including the establishment of a dedicated duty and administration doctor, increasing capacity and introducing a more flexible appointments system. The additional involvement of the Partners in the management and leadership at the Gigg's Hill site over this time of transition, and a recruitment drive to reduce the number of GP locums was also welcomed.'* (Surrey Downs CCG)

**Karen Randolph**

---

**Do you have difficulties attending GP, dental or hospital appointments?  
Or getting to the hairdresser? Or do you know someone who does?**



**If so, NeighbourCare can help!**

NeighbourCare is a local, long-established registered charity run entirely by volunteers and endorsed by Elmbridge Borough Council.

Our drivers use their own cars to provide a door-to-door service for the less mobile residents of Thames Ditton, Weston Green, Long Ditton and Hinchley Wood. There are no formal charges, but we do ask clients to put a contribution into our collection boxes.

For more information phone Frankie Bell on **07790 472 993** who'll be delighted to tell you more about NeighbourCare and how it works.



# Watching the water – Introducing Tony Nockles



What can you find ‘fish spotting’ on the river Ember? Dace, roach, bream, carp and even metre-long eels have been seen, thanks in no small measure to our new member of the RA Executive Committee, Tony Nockles.

The Ember is close to Tony’s heart. It is also close to his back door, although not as close as when he and his wife Nell moved to Riverside Avenue, East Molesey, in 1970. At that time it was the only house they could afford in the area as it had been affected by the flooding of ‘68. A flood-alleviation scheme followed which diverted the course of the Ember; the houses now back on to a shared park which runs down to the water’s edge.

Riverside Avenue is a one of a number of roads in East Molesey that recently became part of the Thames Ditton Ward within Elmbridge Borough Council (EBC).

In 1990 a large ‘fish-kill’ in the Ember (as a result of large amounts of sludge being released by the water company) prompted local residents to action and Tony was founder Chairman of the River Ember Clean Up group. Its objective was to keep a wary eye on the water quality from the, then newly completed sewage treatment works at Esher. The clean water and abundant fish life that we see today is testament to the work the group has done over the years.

‘Cometh the hour, cometh the man’ is very apt as Tony previously had been a director of the UK water industry body, British Water, representing infrastructure operators, suppliers and contractors. In this role he led trade missions round the world from the Philippines to Peru, from New York to New



Zealand. Perhaps the most important trip he took was to Cleveland, Ohio where he met wife Nell, who swapped the shores of Lake Erie for the banks of the Ember, where they have brought up three children.

The Ember Clean Up Group continues to campaign today. Concerned that EBC adopted its own “Flood Risk Supplementary Planning Document” before the Environment Agency (EA) publishes its Flood Risk Assessment, due later this year, it is encouraging local organisations and residents to press EBC to delay all new building and planning approvals on the Thames floodplain until the EA provides details of the actual flood risks.

When not busy with voluntary and community activities Tony can be found enjoying the vibrant café scene on Bridge Road or a quiet pint next to Marney’s Pond. ...never too far from the water!

**Residents’ Association**

# FUNERAL DIRECTORS AND MEMORIAL STONEMASONS



## THE FAMILY YOU CAN TURN TO...

Seven generations of our family have been helping and advising local families in their time of need. For over 230 years we have been providing funerals, both modest and traditional, with care and compassion.

<b>ESHER:</b>	78 High Street	01372 463903
<b>EAST MOLESEY:</b>	156 Walton Road	020 8941 1412
<b>THAMES DITTON:</b>	37 High Street	020 8398 4586

**Lodge**  
BROTHERS 1780  
*the family you can turn to*

[www.lodgebrothers.co.uk](http://www.lodgebrothers.co.uk)



ASK ABOUT OUR  
PRE-PAYMENT  
FUNERAL PLANS

Custodian Trustee: HSBC Trust Co. (UK) Ltd.



**WESTON GREEN**

**020 8398 6027**

24 Hour Answerphone

## Orthodontics for Children & Adults

Jane Eden BDS(Lon), MSc(Lon), MOrth, RCS(Eng)

Fraser McDonald BDS(Lon), MSc(Lon), PhD, MOrth, RCS(Eng)

- Gentle and Caring Environment
  - Private and NHS Practices
  - Evening and Saturday Appointments
- Available Privately

### PRIVATE Practice:

Yewhurst  
Weston Green  
Thames Ditton  
Surrey  
KT7 0JZ

### NHS Practice:

Oak Lane  
Twickenham  
TW1 3PH



[www.weston-green-orthodontics.co.uk](http://www.weston-green-orthodontics.co.uk) E-mail: [wgop@jeden.freeserve.co.uk](mailto:wgop@jeden.freeserve.co.uk)

# ‘Through An Artist’s Eye’ Felicia Browne and the Spanish Civil War



*Through An Artist’s Eye*, an exciting new exhibition celebrating the life and work of Felicia Browne – a locally born artist of international importance – is coming to **All Saints Church Weston October 8-29 2016**.

The opening on **October 8 12-2pm** is a free event open to all (including refreshments and video installation). Free poetry and art workshops will also run during this period – details below.

There is a highly personal connection to this history. It is produced by Jenny Rivarola (poet) and Sonia Boué (artist) who are both daughters of Spanish Republican exiles, born in the UK.

This unique exhibition funded by Arts Council England marks the 80th anniversary of her death and of the memorial exhibition of her work. It aims to introduce audiences to the history and create a symbolic return to the place of her birth.

*“The depth of our gratitude has moved us to commemorate Felicia’s remarkable contribution to Spain,”* explains Sonia Boué. *“Arriving at a series of seven key stages which mark Felicia’s trajectory to Spain, we have created paintings and poems which guide the viewer on a multi-layered narrative journey.”*

The project draws on Felicia’s inspiring letters and sketches of the period, some of which will also be exhibited.

Felicia Browne, who was born in Thames Ditton (at The Elms on Weston Green Road)

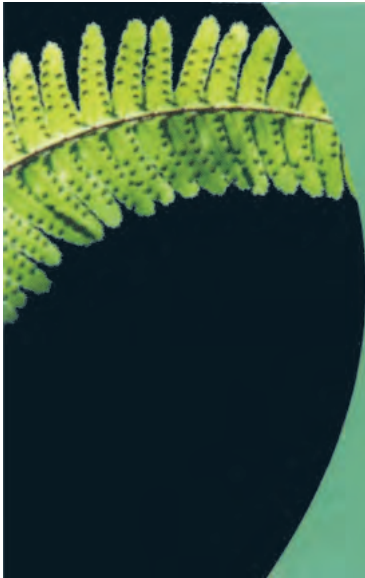
in 1904, is a unique figure in the history of British involvement in the Spanish Civil War 1936-1939.

Notable as the first British volunteer fighter to die in this conflict, she was its only British female combatant. Both activist and artist, she is also known for her exquisite sketches of animals and working people. Her drawings from Spain can be considered fine examples of war reportage.

The Spanish Civil War can, in many ways, be seen as a precursor to the Second World War. Hitler and Mussolini had assisted the Spanish dictator Franco, and Hitler practised devastating new techniques in aerial bombardments of civilian populations in Spain, notably Guernica in



*Sketch by Felicia Brown*



## **M.P.B. Landscapes**

All aspects of work undertaken:  
hard and soft landscaping, patios,  
fencing, decking, brickwork, turfing.

### **Mark Blunden**

Landscaping since 1993  
fully qualified, Merrist Wood trained

Tel: 020 8398 3509

Mobile: 07957 281 748

E-mail: [markblunden@yahoo.co.uk](mailto:markblunden@yahoo.co.uk)

## **DOWN TO EARTH**



**27 Church Walk  
Thames Ditton  
Surrey  
KT7 ONP**

Phone: 020-8398-7219

Mobile: 07867-590-450

E-mail: [downtoearth2008@live.co.uk](mailto:downtoearth2008@live.co.uk)

*A family run, local gardening service*

## **GARDEN MAINTENANCE, CLEARANCE & DESIGN AT AFFORDABLE RATES**

Gardens can get out of hand very quickly, sometimes  
it can be hard to keep on top of it all year round.

We can provide total garden clearances', regular gar-  
den maintenance, garden design, fencing & paving, to  
help create.....(and keep) the garden you've always  
wanted.

Why not give us a call or drop us an e-mail to see  
what we can do for you?

1937. Had Franco been defeated, the course of European history may have been altered.

With the benefit of hindsight, Felicia emerges as a prescient figure. In 1928 she took a sculptural scholarship in Berlin and witnessing of the rise of Nazism was instrumental in her subsequent commitment to anti-fascism.

## Involvement and death in Spain

Travelling by road through France to Spain in the summer of 1936, Felicia found herself in Barcelona in the earliest days of street fighting which marked the outbreak of civil war. She was determined to contribute, but she spoke no Spanish and at first it was difficult to find a role for herself.

Some weeks later, to her great joy, she enlisted as a volunteer in the Republican army and found the opportunity she longed for. But she was killed on her first mission - coming to the aid of a fallen comrade. Without hesitation she had stepped into a hail of bullets to administer first aid.

On her death her Spanish drawings were recovered and brought back to England, and they are now held in an archive in Tate Britain and in private collections. In October 1936, a posthumous exhibition was held in London, at which her remarkable talent and promise were revealed.



Artist Sonia Boue at work

## WORKSHOPS

### Free Poetry Workshop

**Friday October 14 10am-1.30pm**

All Saints Church Hall (Weston Green).

Suitable for anyone with an interest in poetry and Spain, this workshop run by writer Jenny Rivarola will focus on the life and work of Spain's most pre-eminent poets of the Civil War period: Lorca, Machado and Hernández.

The session will be accessible to all and poems will be read in English translation.

### Free Art Workshop

**Friday October 21 11.30-3pm**

All Saints Church Hall (Weston Green),

An opportunity to explore mixed media techniques with artist Sonia Boué, focusing on the works created for this exciting exhibition. *"The drawings of Felicia Browne will be our inspiration, leading to work with charcoal, graphite and water based paints to explore mark-making and abstract landscape."* No previous experience required.

More information is available on the website

<https://artistseyecom.wordpress.com>

To book a place on the workshops contact:

#### Art Workshop:

[soniaboue@yahoo.co.uk](mailto:soniaboue@yahoo.co.uk)

#### Poetry Workshop:

[jennyrivarola@yahoo.co.uk](mailto:jennyrivarola@yahoo.co.uk)

We recommend booking in advance as places are limited.

**Jenny Rivarola**



# Claremont Fan Court School

An independent co-educational school for pupils aged 2½ to 18 years

## Come and visit us



Pre-Preparatory and Nursery School 2½ - 7 year olds.

Preparatory School 7 - 11 year olds.

Senior School 11 - 18 year olds.

Prospective families are welcome to visit the School.

For further information or to arrange an appointment please telephone **01372 473624** or email **info@claremont.surrey.sch.uk**



Nursery  
Pre-Prep  
Prep  
Senior  
Sixth Form

[www.claremont-school.co.uk](http://www.claremont-school.co.uk)

# Weston Green's drop in lunch club



The idea for a social lunch get-together came about 18 months ago, when Ian Whitley, Missioner at All Saints Weston, thought it would be good to provide a lunch for any people who were on their own, in the rather dreary down-time between Christmas and the New Year.

A group of us got together and planned a lunch time party and issued an open invitation through the church's broadsheets, etc. We were delighted when nearly 20 people turned up for a delicious meal with the usual Christmassy trimmings, and it was very much enjoyed.

So we decided that we would try to hold a regular drop-in lunch on the last Wednesday in the month on a regular basis for retired people, especially those who live on their own and we held our first lunch in February 2015.

Ian was successful in obtaining some start-up funding for this community project and it has become very popular with over 40 people 'on the books' and a total of around 30 people each month, enjoying a tasty two course meal, followed by coffee, tea, chocolates and grapes. Every month we have had a speaker on a wide range of topics, including from our local councillors; from a member of Equity; a Prison Visitor; Painshill Park, advice on facilities for older people provided by Elmbridge Council and Walsingham Care, and recently Alice Arnold, BBC presenter, the daughter of one of our most regular members who gave us a fascinating insight to her career with the BBC.

In July over 30 members and helpers also enjoyed a garden party in the colourful garden of Tony and Val Atkinson – and the sun shone!



*A garden party montage*

Our lunchtime members make it very clear how very much they enjoy the company, and the meal. After a break in August, the lunch club's next dates are on Wednesdays September 28, October 26 and November 30. It is open to anyone living in the Parish, and a phone call to All Saints' office on 020 8398 1849 helps us plan the catering. Lunches are held in the Hall beside the Church in Chestnut Avenue, from 11.30am for 12 noon.

**Valerie Atkinson**

# Secret Gardens reign supreme



*New for 2016, the garden at Lynton*

If summer appears non-existent, it's chucking it down with rain, distinctly chilly and the only thing billowing in the borders is the bindweed – which appears to have taken steroids – it must be time to... open your garden to the public!

Such was the challenge facing the heroic gardeners who opened their plots, and their hearts, for the Secret Gardens of Thames Ditton 2016 event, which took place on Sunday June 19. A cold spring, the greyest of May months and rain, rain, rain did not auger well for this hugely popular village event. A deluge of near-Biblical proportions on the Friday before the Sunday opening was particularly cruelly timed, and caused this organiser almost to add bitter salt tears to the ever-deeper 'water feature' that had recently been a flower bed.

But this is an English summer... and true to form, on the opening day itself the rain held off, the clouds parted and an

unfamiliar yellow ball of light appeared in the sky, ready to welcome the faithful who flocked to this, the fourth event of its kind (including Weston Green's triumphant debut in 2014).

A total of 11 gardens opened their village gates between 1pm and 5pm on Father's Day this year, and some reported in excess of 400 individual visitors throughout the day. Despite drastically delayed dahlias, sun-starved sunflowers, confused clematis and a host of other weather-related horticultural hiccups every garden looked wonderful in the unfamiliar sunshine, and the hard-working gardeners themselves seemed to bloom brighter as the day went on.

From Jill and Charlie Poole's perennial favourite in Church Walk, through a delightful nursery rhyme themed plot by Gigg's Hill Green, the tranquil space of the Garden of Remembrance nestled by St Nicholas Church, and the Tardis-like



hidden gem of Alan and Hilary Hepburn's (totally) secret back garden in the High Street, there was something fresh and lovely for all to see in all the gardens that were so generously opened by their owners.

New this year was the secret garden behind Lynton in St Leonard's Road, a delightful communal space for the residents of this sheltered housing development, itself one of the better-kept secrets of Thames Ditton. Some beautiful baskets, window boxes and spectacular climbing roses made a colourful backdrop to this valuable social resource.

At the Secret Gardens HQ at Maybury Lodge in the High Street a frantically-busy cadre of helpers doled out coffee and spectacular cakes (baked by a small army of generous donors), while the good-natured queues grew even longer and hungrier.

Luckily diversion was at hand in the willow form of the superb 'cellist Anna Tam ([www.annatam.co.uk](http://www.annatam.co.uk)) – performer, composer, soprano, and member of the Mediaeval Baebes all-girl group – who generously donated her talents free to entertain the crowds. A Thames Ditton flower bed was probably quite a change from her last venue... playing Verdi's Requiem at the Royal Albert Hall!

Another volunteer who donated her services free deserves a bouquet of her own – local artist Lisa Tolley ([www.lisatolley.co.uk](http://www.lisatolley.co.uk)), well-known for her delightful house portraits and witty Thames Ditton-themed creations, who once again hand-drew the charming map and ticket flyers for the event – check out the Stitchery gift shop in the High Street for more stunning examples of her work. Some 500-plus tickets were donated by Will Bland, husband of Thames Ditton Residents' Association Councillor Trisha Bland, and the pair of them went

even further by opening their own truly secret garden off Station Road to all comers, including a roaring success of a home-grown plant stall and an old-fashioned sweet shop.

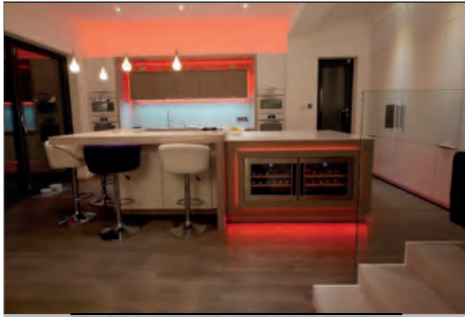
Advance tickets were sold through the Stitchery gift shop in the High Street and at the Secret Garden florists (no relation!) in a conscious effort to boost local trade and 'keep the heart in the High Street'. On the day itself local pubs and those shops that were open reported excellent trade and 'a real buzz' in the village.

When garden gates were finally swung shut at 5pm the amount raised throughout the day totted up to an impressive £2,691, some 20 per cent up on the last SG event in Thames Ditton. Of this, £600 was donated to the Garden of Remembrance – which is always looking for helping hands to keep its communal borders blooming – and the remainder was donated to the Residents' Association Christmas Lights fund to keep our village looking fantastically festive.



*Afternoon tea and cello in the garden.*

**Andy Anderson & Caroline James,  
Organisers, SG-TD 2016.**



**MOORE**  
*By Design*

PROFESSIONAL KITCHEN DESIGN

The Hersham Centre, Hersham

T: 01932 379076

New online gallery with 150 images...

[www.moorebydesign.co.uk](http://www.moorebydesign.co.uk)

## Karen's Angels

The All Needs Carers



Karen's Angels is a friendly local care company, operating in Surrey.

We provide professional 24 hour care, social and personal care services.

We are very proud of the excellent reputation we continue to achieve with our customers, their families, local authorities, GP's and DN's.

For further information please contact

Karen/Andrea

02082247848

07760220604

## Antique Clock Restoration & Repair

Specialising in Grandfather, Dial, Bracket and Carriage Clocks

**Contact: Mark Rowe M.B.H.I**

BADA Diploma. Member of the Watch & Clockmakers Guild  
West Dean Diploma.

**Tel: 020 8605 0331**

[www.theclockgallery.co.uk](http://www.theclockgallery.co.uk)

Additional Restoration services available for Watches, Books,  
Ceramics and Fine Furniture.

Antique Clocks also bought and sold.



shop **signs** van **signs** window **signs**  
for sale **signs** sticker **signs** frosting  
warning **signs** banner **signs** plaques  
display **signs** posters **and** more...

**flyingcolours** call 020 8398 1770

# A peal for ringers



The tradition of bell ringing at St Nicholas' dates back to at least 1552, with the first mention of bells in an inventory of church goods. However, the current tower and steeple with six bells date back to 1753. Apart from being recast in 1962 and then rehung in new frames in 1981, the bells are as they have been for over 260 years, with a history of calling worshippers to church, tolling monarchs' deaths and celebrating weddings, coronations and military victories etc.

That tradition is now under threat, however, through a lack of ringers. We should be delighted to recruit new members to ensure continuity. Nicely struck ringing can be a joy both to perform and to listen to!

The way our bells are rung, full circle, is uniquely British and is only found outside the UK in a few other churches with British colonial history. Elsewhere, bells are rung in a cacophony of sound, as bells of different sizes ring at different speeds.

The full circle method allows control over the speed and timing of ringing, within limits. Bells are rung full circle from the up position (shown in the picture), bringing it to the balance, and then back the other way and up to balance again. By bringing a bell to balance, the ringer can change the speed of ringing, allowing the order that the bells are rung to be changed.

Bell ringing is a skill and requires ringers to work as a team. Each ringer controls one bell. Initially, the bells are rung in 'rounds', when the bells are rung in order of increasing size, with precise timing to give a regular interval between strikes. A pause of the length of one strike is necessary to maintain rhythm, especially when the order in which the bells are rung changes.

There are a number of 'methods' that can be learnt which define the pattern of 'changes' to mix the bells up and bring them back in order again.



This is called ‘change ringing’ (not campanology, which relates to hand bells). Each ringer learns the pattern and adjusts the timing of their ringing to follow the pattern.

Ringers control their timing in different ways, e.g. listening, rope sight or counting places. At the end, the bells are generally rung down for safety, as this is when the bell is stable.

We are planning some bell ringing training soon. If interested, please contact Giles André via St Nicholas’ Parish Office (020 8398 9641). Ringers must be tall and heavy enough to handle a bell and must be able to follow safety instructions so age 11 is usually the youngest age for ringing.

**Giles André**



**simon simpson**

BA(Hons) MSc MAREBT BABCP UKCP MNRHP

**Cognitive Behaviour Therapy  
Clinical Hypnosis**



Registered with Bupa  
and all major insurance  
companies

**Expert, confidential treatment for:**

- Panic
- Workplace Stress
- Low Self Esteem
- Insomnia
- OCD
- Depression
- Anxiety
- Irritable Bowel Syndrome
- Phobias
- Anger

**clinics in Esher, Hampton Court and at The London Bridge Hospital**

**full details at: [www.cbt-surrey.co.uk](http://www.cbt-surrey.co.uk) tel: 07801 450 477**

# Who'd be a Trustee ...maybe you?



The historic almshouses in Thames Ditton grace the view of travellers to and from the rail station. Local people have been interested to read about the history and activities of the Thames Ditton Almshouse Charity which runs them.

But what is it like to be a Trustee of such an iconic charity? We caught up with current Chairperson and long-standing Trustee Irene Taylor (right) and asked a few questions.

## What did you do before you got involved?

I was a Director of a fruit importing company based in Old Covent Garden. I moved to Thames Ditton in 1985 before I retired in 1989.

## How and why did you get involved in the charity?

When I moved into the area I was asked if I would like to be a Trustee and as I wanted to do something for the community I took on the role of Honorary Secretary, which I did for many years. I was involved on a day to day basis as first port of call for the residents and helping to sort out issues. I am still involved now as Chairperson.

## What do you like about the charity?

It is a local charity that residents and Trustees can feel part of. It provides a tangible benefit locally and is small enough to be manageable. It also provides an opportunity to meet and work with new people; we have quarterly meetings to manage our affairs.



## What do you look for in a Trustee?

Enthusiastic people who want to get involved in a great cause and actively participate in taking care of the residents and the charity's assets, buildings, land and financials. Trustees come from all sorts of backgrounds from healthcare to property, from marketing to retail. The characteristic they all share is a willingness to get involved.

## What are you looking for now?

Our current Treasurer is standing down and we would like to recruit a new Trustee to the role. The Treasurer deals with the accounts, monitors income and expenditure, controls a couple of contracts and pays suppliers. There are only a few outgoing a month, mostly standing orders, so monthly balancing of the books is not too arduous!

If anyone has an interest in becoming a Trustee please give Irene Taylor a call on 0208 398 1011.



# Barking up the **right** tree



“ HJC are a very hardworking, professional and personable team who sold my house within a few days of going on the market.

I would highly recommend HJC to anyone thinking of selling their property in the area and am sure that you would not be disappointed with the final result.

Val - Thistledene, Thames Ditton.

”

## Another happy customer :)

We are currently seeking properties to market.  
Contact us today for a free valuation.



Contact Jay Chitnis or Emma Wescombe

**020 8398 3707** [thames.ditton@hjc.co.uk](mailto:thames.ditton@hjc.co.uk)

HJC Estate Agents, 2 High Street, Thames Ditton KT7 0RY

# Archiving for the future



*Looking for family history? Soon you'll be able to search the archives from Weston Green*

The All Saints Weston Green was built almost entirely by subscription in 1939 and has published a parish magazine since the beginning of the 20th century.

Over the years the church has amassed a large archive collection of magazines, cine films, plans, and event memorabilia along with the formal archive of Baptisms, Marriages and Funerals. Whilst most of the formal archive is stored at Surrey History Centre, the Community Archive has moved around various rooms in the church, un-catalogued and in various boxes and storage places.


The church received a grant from the Heritage Lottery Fund at the beginning of 2016 to digitise the entire collection, catalogue it and make it available online for everyone to view.

The grant also allowed for improvements to storage as well as the development of a volunteer community archive team. This team will receive world class training from Surrey History Centre and David Mander MBE in helping to maintain the Community Archive and pass on their skills to further generations.



## Backache?

Osteopathy  
Acupuncture  
Chiropractic



## Neck and Shoulder pain?

It is common, not normal.

Book a free 15 minute consultation before the problem gets worse

Clinics in Thames Ditton & Kingston  
020 8786 6367 [www.spinaljoint.com](http://www.spinaljoint.com)

7 Lime Tree Avenue KT7 0NA



SpinalJoint





1966 Stewardship Campaign

As part of the project, the church will also be working with Rebecca Mileham, a specialist workshop and education advisor who along with local teachers will be helping All Saints to put together interpretation materials, open days and workshops for schools and groups.

**Stage 1** of the project – taking every photograph/film and digitising them is now complete.

**Stage 2** is just beginning which is the long and slow process of cataloguing them all.

However, we are now looking at Stage 3 which is taking applications from people who would be interested in being part of the volunteer community archive team. More details will be available on the All Saints Weston Green website ([www.allsaintsweston.com](http://www.allsaintsweston.com)) from the beginning of September 2016 and applications will be open until the beginning of October 2016.

The archive has already started taking in additional material from our local affiliated scout and cub groups and the plan is to continue to gather in material, digitise it and then preserve it for future generations. If you would like to deposit anything in the Community Archive, then do email us at [archive@allsaintsweston.com](mailto:archive@allsaintsweston.com)



Original architects drawing

**Phillip Johnson**

## Weston Green

Volunteers  
email

[tshiple@elmbridge.gov.uk](mailto:tshiple@elmbridge.gov.uk)



## Thames Ditton

Volunteers  
email

[tdwgra@the-blands.co.uk](mailto:tdwgra@the-blands.co.uk)

# RUSSELL-COOKE | SOLICITORS

We can offer you high-quality specialist advice on most legal matters, personal or professional - from employment-related issues to property transactions, wills and estate planning, relationship breakdown and the care and protection of the elderly.

+44 (0)20 8546 6111

[www.russell-cooke.co.uk](http://www.russell-cooke.co.uk)



## NEIL EVANS

HEATING & PLUMBING SERVICES

Repairs • Parts • Bathrooms • Boilers • Gas • Plumbing

Local Qualified **PLUMBER** and **GAS SAFE** Engineer



[www.neilevansplumber.co.uk](http://www.neilevansplumber.co.uk)  
email: [neil@neilevansplumber.co.uk](mailto:neil@neilevansplumber.co.uk)  
messages: 020 8398 4259 • mobile: 07906 412 170



## THAMES DITTON UNITED REFORMED CHURCH

Speer Road – close to Thames Ditton station

Services at 10.45 on Sundays

Secretary: Mrs Linda Lambert

Tel: 020 8398 1476 – Email: [lindanmlambert@aol.com](mailto:lindanmlambert@aol.com)

**WELCOME TO ALL**

Find us at <http://www.tdurc.org.uk>

Hall bookings telephone: 020 8224 6396



# Rogues, Vagabonds and Sturdy Beggars



Imagine our local constable together with the vicar ordering a vagrant to be stripped to the waist and whipped until bloodied, before sending him on his way. Nowadays wandering people of no fixed abode are treated as any other citizens, allotted land to stay on and access to a full range of social services and benefits. Of course they are expected to be good citizens, to pay their taxes if they earn any money and to refrain from occupying other land and from nicking stuff around the neighbourhood. But a few centuries ago that was not the case.



In January of 1679 the parish clerk at St. Nicholas, on the order of the Justices of the Peace at the Surrey Quarter Sessions, painstakingly wrote out six pages of an edict concerning Rogues, Vagabonds and Sturdy Beggars. Courts throughout the country had been instructed to enforce the existing legislation on vagrancy (as contrasted with that on the ‘settled’ or ‘deserving’ poor). Their edicts were to be

*“registered in their respective parish Books those to be kept and produced for ye better Information and Example of those yt shall succeed them.”*

Note that when “y” is the first letter, it represents the “th” sound, so that yt is rendered as “that” and ye as “the.” There are several similar records of these edicts preserved around the country but it seems that the Thames Ditton version is the only one emanating from the Surrey courts that survives locally. One wet Sunday I transcribed the yellowing pages – with some difficulty, and a glass of decent port. The preamble outlines a difficult social situation:

*“Forasmuch as the grand Inquest hath informed this Court yt ye Dayly concourse & greate increase of Rogues Vagabonds and Sturdy Beggars is a generale grievance & annoyance to ye Inhabitants of this County & through ye negligence or ignorance of those officers who have been trusted in this concerne they are now growne soe insolent & presumtios yt they have oft by threats & menacies extorted money & victualls from those who live in houses far remote from neighbours ...& have put the people in a generall consternation or feare that they will find their houses or steale their goods”*

## Setting the poor on the poorer

The negligent or ignorant officers to whom enforcement was entrusted were the local constables, headboroughs or tythingmen. These last were ordinary



## Brighten up your Garden!

Is your garden in need of a makeover?  
From planting plans to a simple injection of colour

**Green Room Garden Designs** can help  
020 8398 5703

Anna 07801 921166 – Kate 07956 641881  
RHS and Merrist Wood Qualified

**R P Brown** Est. 1968 - Traditional, reliable and conscientious local **plumber**

*No call out and no minimum charge, free written estimates, 1 year parts/labour guarantee*



[www.plumb-master.co.uk](http://www.plumb-master.co.uk)

Tel: 020 8398 0207 Mobile: 07973 636672



e-mail [info@plumb-master.co.uk](mailto:info@plumb-master.co.uk)

56 Speer Road, Thames Ditton, Surrey KT7 0PW



Brittain Hadley is an independent and professional firm of Chartered Building Surveyors offering the following services:

- Residential Surveys and RICS Condition Reports
- Project Management of refurbishment, new build and extensions
- Party Wall Awards
- Planning applications for residential and commercial premises
- Architectural drawing and design services
- Specification of works and building contract administration
- Dilapidations acting on behalf of landlord or tenant
- Advisors on sustainability matters

**Tel 020 8742 7704 E-mail [info@brittainhadley.co.uk](mailto:info@brittainhadley.co.uk)**  
1 Claremont Road, Surbiton, Surrey KT6 4QR

working people whose position derived originally from Anglo-Saxon custom and practice whereby all members of a small community (originally per ten men – hence the “tithe”) were collectively held responsible for its good behaviour and a head of that community appointed. In reality, their “negligence” stemmed from a deep seated and persistent reluctance to implement the vagrancy laws against poor people. Although not as draconian as in the times of Henry VIII, when repeat offenders were not only whipped but had an ear cut off – and the other ear for a third offence – the punishment was still on the harsh side:

*“all such persons which they shall apprehend in such search or shall take begging wandering or disordering themselves ye Constables headboroughs & tythingmen being assisted by ye Minister & some other of ye parish shall cause to be stripped naked from the middle upwards & to be openly whipped untill their bodies be bloody”*

Of course it was the ratepayers who were most concerned about, and fearful of, vagrants, Prior to Henry VIII’s raid on the monasteries, the rich and powerful Church had generally supported the poor and found them occupation. But afterwards, other measures had to be put in place. The local parish was increasingly obliged to support its own indigent parishioners, those who belonged to the parish by birth or settlement. This was a burden on ratepayers. And so, in the times in question, the poor of the parish were licensed to beg, and identified as licensed – and as poor, and as beggars – by mandatory badges. Indeed in the accounts of St Nicholas Church for 1717, we find Justice of the Peace Shem Bridges, Lord of the Manor of Imber, instructing that every three months *“the Church Wardens*

*& Overseers of the poor doe cause the poor that stand in the List of Weekly allowances to appear before the parishioners at the Vestry or Meeting that they may examine & see that the aforesaid poor persons have The Badges fix’d & rightly placed... and that they consistently weare the same.”*

Thus badged, local poor could beg in the parish to partly support themselves, reducing the burden on ratepayers. Non-local beggars, whom the ratepayers had no intention of supporting or allowing to beg, could be distinguished from them. The Surrey edict stipulates that constables and tythingmen

*“make a privy search, on any week & oftener if needs be, in all houses victualling houses farmes and other suspected places in ye night time for ye finding out and apprehending of Rogues Vagabonds Sturdy Beggars wandering & idle persons so they shall also apprehend all such Rogues &c who travel with forged and counterfeit passes in ye Day time... shall goe from house to house and give notice to any householder in person within their respective limits yt they take care yt neither they nor any of their servants shall from thenceforth receive any Rogue &c wandering or disorderly person or any other person unless poor Inhabitants of ye same parish licensed to begg by ye officers who shall happen to beg at any of their houses.”*

You can see that a conscientious tythingman might not have much private life left, especially if he reported neighbours for harbouring wandering and idle persons and thereby liable for a ten shilling fine, as he was obliged to do.

The situation was complicated by travellers offering casual labour, wanted on



**Weston Green**  
School

A thriving independent  
co-educational  
day school for children  
aged three to eleven

*So much going on...*



**NEW**  
Key Stage 2  
extension opening  
September  
2016

*Visit us and see for yourself*

**Open Morning:** Thursday 22nd September, 9.30 - 10.45am

Call us on **020 8398 2778** or visit **[www.westongreenschool.org.uk](http://www.westongreenschool.org.uk)**

Weston Green Road, Thames Ditton, KT7 0JN



to his or her own parish within a limited period of time. There he would be set to work, if able. If the place of settlement or birth was not known, the responsibility devolved upon the parish who had last let him pass without punishment:

*“& ye officers of yt parish shall commit ye person to ye house of Correction or ye common Gaole of ye County there to be employed in worke untill he shall be placed in some service for a space of one yeare, or not being able of body untill he shall be placed in some Alms house in ye County.*

farms; by strolling players, tinkers plying trades; and by members of the armed forces travelling home on leave, and sundry other categories including the disabled – people were sympathetic towards their begging.

### Corrective measures

A whipping would generally take place with the offender bound to the stocks. In March 1957 local historian CRS Saunders, writing in the *Dittons Review*, plausibly identified the site of the stocks in Thames Ditton as being roughly where the Fountain roundabout is today. After a whipping, the rogue concerned was issued with a pass by the vicar, a constable, JP or other officer which entitled that person to travel directly

“Incorrigible rogues” – the phrase, still much used, comes from this batch of legislation – or repeat offenders would also be sent to a House of Correction where labour would be enforced. Although there was a parish workhouse here, an entirely different kind of institution, there was no House of Correction in Thames Ditton as stated by local historian Philip Burchett in “A Historical Sketch of Thames Ditton” (1985). I believe that he based his supposition on an entry in the Overseers accounts for the parish of 7 June 1717 which reads “Paid ye warrant for ye rebuilding of a House of Correction to ye Thames Ditton Constable... £2 12 2” (and a like entry attributing £1 11 4 to Claygate.). JPs for the

# Hand crafted silver and gold

by an acclaimed master silversmith

Stunning bespoke gold,  
silverware and jewellery, by  
acclaimed master silversmith  
Bernard Leon.

Peerless, exquisite hand crafted  
finery, individually created on the  
premises and totally unique.

## ASSIMI

54 High Street, Thames Ditton  
Telephone: 020 8972 9500



A centre dedicated to  
holistic  
& complementary  
healthcare for all

 **kent clinic**  
of natural medicine

We offer a range of therapies that will effectively treat a variety of problems.  
One of the many therapies we offer is Addictions Counselling...

**Are you suffering with alcohol consumption, drug usage, eating disorders, gambling, relationships or any mental disorder including stress, anxiety, through to major depressive symptoms?**

Steve is an accredited member of the BACP and FDAP and has worked for several years in private practice specialising in the psychology of addictive behaviour and holds an MSc in Addictions Psychology and Counselling

Steve also has a background with several senior roles with blue chip corporate organizations and fully understands the complexity of how addiction impacts the workplace.

Contact: **Steve Clarke** MSc, MBACP, FDAP

tel: **07523 905 370** email: [steve@steveclarketherapy.co.uk](mailto:steve@steveclarketherapy.co.uk)

Above Kent Chemist, on 2nd Floor, 104 Walton Road, East Molesey, Surrey KT8 0DL



county would levy a warrant on parishes to apportion county-wide expenses, in this case for the rebuilding of one of Surrey's two Houses of Correction at the time, in Southwark. The other was in Guildford. A third was established in Kingston in 1761.

## Drafting amusements

Digital text comparison on the internet, a tool not available to earlier historians, throws up some intriguing facts. The existing legislation from which much of the edict's drafting was taken included 39 & 40 Eliz. Cap. IV 1598 "*An Act for punishment of rogues, vagabonds and sturdy beggars*"; and 7 & 8 JAC I Cap. IV 1610 "*An Act for the due execution of divers laws and statutes heretofore made against rogues, vagabonds and sturdy beggars and other lewd and idle persons*" (this was an earlier attempt to get the existing laws implemented by reluctant parishes). It would be a mistake to conclude from the preamble of the 1679 edict recorded in the annals of St. Nicholas Church ("*ye Dayly concourse & greate increase of Rogues Vagabonds and Sturdy Beggars is a generale grievance & annoyance to ye Inhabitants*") that there was any sudden increase in the problem, for the language is borrowed almost exactly from similar official documents issued at intervals during the previous sixty years. They were, of course, troubled times.

## "Sturdy" Beggars

Of interest to those in the public service who today grapple with drafting official documents is the evident problem their predecessors found in describing the "wrong sort of Beggar" (the right sort being those licensed to beg so that the parish did not otherwise have to maintain

them, and another acceptable sort being the incapacitated). In various acts, during preceding centuries, concerned with the poor and with vagabonds we find "valiant" beggars (23 Edw III), 'strong' beggars, 'strong and mighty' vagabonds, and 'persons whole and mighty in body.' These terms acquired frustratingly unsuitable positive connotations and were eventually replaced by "sturdy" which was used for many years thereafter. Today we would use "able-bodied" to describe those able to work but electing to beg.

## A little mischief

And so we revert to present times. Concerning whipping, my attention was lately caught by a BBC report of a survey of 24,000 respondents who voted in the recent referendum on the EU. It found that by far the best correlation with a Leave vote were positive responses to questions such as, "Do you think criminals should be publicly whipped?" or "Are you in favour of the death penalty?" "You get over 70% accuracy," said the fellow who processed the results. This suggests that a minimum of 28% of voters in Elmbridge, which voted 60:40 in favour of Remaining, would support whipping.

You would no longer fear a whipping, however, should you be a rogue. The offence of "being an incorrigible rogue" persisted through several iterations until as recently as 2013, when the Vagrancy Act of 1824 was taken off the statute book at last. I can relax now.

**Keith Evetts**

The full transcript of the 1679 edict in the church records, together with my notes, is available at the Surrey History Centre Woking under the reference 2568/1/1

# Solution to the Summer Crossword

by Michael Jackson



H	I	E	R	O	N	Y	M	U	S	B	O	S	C	H
I	X	H	O	P	O	P	I	P	I	P	I	P	I	P
P	O	P	P	I	N	G	S	U	R	F	I	N	G	
P	O	O	H	I	E	G	H							
O	A	S	T	B	U	G	L	E	O	N	U	S		
C	E	N	R	O	A	E	P							
R	E	D	C	O	A	T	N	E	B	U	L	A	E	
A	M	A												
T	O	C	C	A	T	A	U	N	F	A	Z	E	D	
I	O	D	G	T	T	I	T							
C	O	R	K	P	E	T	R	A	L	N	E	R		
O	U	A	L	I	A	G	A							
A	I	N	T	R	E	E	C	A	M	P	A	R	I	
T	N	U	S	L	I	R	N							
H	E	A	D	M	A	S	T	E	R	S	H	I	P	S

Congratulations to the senders of the first three correct entries opened in the shuffle. Each wins a £5 voucher to spend in local shops.

Josephine Simeone  
31 Portsmouth Avenue  
Thames Ditton KT7 0RU

Jo Dunstone  
57 Warwick Gardens  
KT7 0RB

Mr K Yale  
Flat 3, Gibson Court  
KT10 0AW

## Alan Greenwood & Sons

Independent Family Funeral Directors

[www.alangreenwoodfunerals.com](http://www.alangreenwoodfunerals.com)



### The Funeral Service that caters for everyone's needs

- A choice of the latest Jaguar or Mercedes Hearses and Limousines
- Home visit arrangements
- Pre-paid funeral plans
- Memorials
- Quality Service 24 hrs day



*The Greenwood Family are directly involved in the running of the Company, ensuring that your wishes are carried out with precise attention to detail.*

57 Fleece Road,  
**Long Ditton**

KT6 5JR

020 8398 0012

1 The High Street  
**Claygate**

KT10 0JG

01372 377 377

13 Molesey Road  
**Hersham**

KT12 4RN

01932 260 046

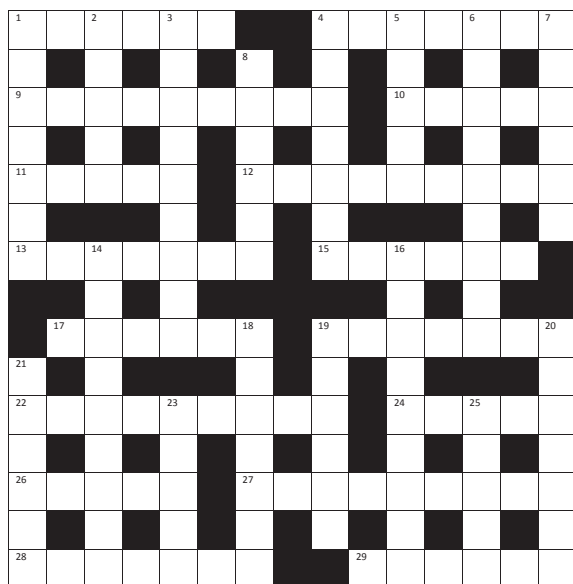
259 Ewell Road  
**Surbiton**

KT6 7AA

020 8399 4455

# Autumn Crossword

by Maureen Willcox



The first three correct entries randomly opened after the closing date October 10, 2016 will win a £5 voucher to spend in local shops.

Please send the completed puzzle (or photocopy) enclosing your name and address, with the envelope clearly marked ‘Crossword Competition’ to:

Thames Ditton Today  
Crossword Competition  
24 High Street  
Thames Ditton  
KT7 0RY

## ACROSS CLUES

1. Give award – one she cannot resist (6)
4. One credits satnav to show the way (7)
9. Extremely inclement weather (9)
10. This clue lacks originality (5)
11. The heart plays an important function (5)
12. Go for this protected parkland (5,4)
13. Feeling good (7)
15. These will soon raise your spirits (6)
17. Home of an Irish Rose (6)
19. That’ll be the day this child has charm (7)
22. Could a nude drown in this country (9)
24. Come to blows then see them (5)
26. Did ones best (5)
27. Better have a romp with Rose in here (5,4)
28. A polite expression of refusal (7)
29. Is it cool to do this during a football match (6)

## DOWN CLUES

1. Presume to be true (7)
2. One should twig this answer (5)
3. It is necessary to get the correct answer (9)
4. Change the subject (7)
5. Hush, hush, this lad is praying (5)
6. After a ten second pause, the group agreed (9)
7. Greet with respect
8. This Mary produced offspring! (6)
14. Attracting attention of the police (9)
16. Financial outcome for one who couldn’t stop (9)
18. One gains support when one listens (7)
19. Small sachet for two (3,3)
20. This is certainly a cover-up (7)
21. Slow down, it can terrify a rider (6)
23. A narrow hilltop (5)
25. This last clue is over (5)

# SERVICES, GROUPS, CLUBS, AND SOCIETIES

## SERVICES

Cheer (Concern and Help for East Elmbridge Retired)	Harry Livesey	01372 879321
Dittons & Weston Green NeighbourCare	Frankie Bell	07790 472993
<b>Elmbridge Borough Council Community Support Services</b>		
Thames Ditton Centre for Retired People	Mon & Thurs	020 8398 5921
Thames Ditton Children's Centre	Tues, Weds, Fri	020 8398 3772
Meals on Wheels, Community Transport, Dial-a-Ride,	ask for service at central	
Alarm & Telecare services, Relief Carers	switchboard	01372 474474
Homesupport Elmbridge	Pam Howard (Manager)	01932 267128
Esher and District Stroke Club	Ann Pollock	020 8398 6132
Voluntary Action Elmbridge	Sally Dubery	01372 46358
Surrey Youth and Adult Education Service	Elmbridge Area	020 8979 8334

## GROUPS

Girl Guiding in TD & WG	Mrs K Williams	020 8398 1300
1st Thames Ditton Brownies	Mrs. Bronach Hughes	020 8398 1628
3rd Thames Ditton Brownies	Deborah Daoud	020 8398 5521
2nd Thames Ditton Rainbows	Alexandra Lyall	07779 616463
1st Weston Green (All Saints) Scout Group	Carole Needham	07975 842423
1st Weston Green Guides (All Saints)	Mrs. Louise Lewis	020 8398 4843
2nd Thames Ditton Guides	Mrs. Bronach Hughes	020 8398 1628
1st Weston Green Brownies (All Saints)	Mrs K Williams	020 8398 1300
2nd Weston Green Brownies	Mrs J Epps	020 8395 0595
1st Weston Green Rainbows	Mrs Helen Hill	020 8398 3135
4th Thames Ditton Ajax Sea Scouts	Alison Derrick	020 8398 0041
Dittons Scout Group	Laura Clarke	020 8398 3447
Coffee and chat (United Reformed Church)	Mrs. E. Barker	01372 467491
Emberbrook Trefoil Guild	Mrs. Adrienne Nealing	020 8398 5582
Friends of Bushey and Home Parks	Jean Smith	020 8977 9391
Friends of Walsingham Care	Miss Valerie Chicken	020 8398 2932
Molesey and Dittons Neighbourhood Watch	Chairman: John Haberfield	020 8398 5256
Parents and Toddlers(St Nicholas church)	Information	020 8398 7211
Ripieno Choir	Nick Harris	020 8399 7231
Surrey Bell-ringers	Nick Pattenden	Nick.Pattenden@cassiopae.com

## CLUBS

Albany Motor Yacht Club	Secretary	01784 466651
Arts and Heritage Club	Carol Butcher	01932 867511
Claremont PROBUS Club	Mr. P. Collins	020 8398 3125
Claygate Bridge Club	Hon. Secretary	020 8398 1710
Colets Health & Fitness	Giordano Orsini	020 8398 7108
Dittons Skiff and Punting Club	Hon Secretary	07710 139417
Dittons & Hinchley Wood Royal British Legion	Hon Secretary	020 8398 6263
Ember Players (Drama) Ember Sports Club	Anne Segall	020 8941 4528

Ember Sports Club	Zenda Hedges	020 8398 7038
Ember Sports Club: Bowls	Sylvia Jones	01932 788701
Ember Sports Club: Croquet	Dr. David Cooke	01932 862841
Ember Sports Club: Tennis	Annabel Duncan	020 8786 6318
Esher Bowling Club	Roger Cooper	01372 468109
Esher Bridge Centre	Paul Whicker	01372 460157
Esher Camera Club	Billy Buchanan	020 8398 3169
Esher 41 and Ex-Round Tablers' Club	Dr. R. Tudor-Williams	020 8398 0108
Folk Dance Club	Pam Phillips	01372 373745
Hinchley Wood / Dittons PROBUS Club	Geoff Francis	01932 867771
Long Ditton Cricket Club	Nigel Hardy	020 8398 8361
Long Ditton Garden Club	Heather Harvey	020 8398 2642
Model Railway Society (Hampton Court)	Secretary	01932 241224
Mothers Union (All Saints)	Jill Cotter	020 8398 4598
Old Cranleigh Rugby Club	Tony Price	07801 837129
Old Cranleigh Hockey Club	Simon Marshall (Men)	07801 737695
	Helen Hawes (Ladies)	07771 557900
River Club (BMYC)	David Walker	0870 460 3586
Rotary Club, Esher	Geoff Morris	01932 868454
Robber Bridge TD Lawn Tennis Club	Val	020 8399 9972
Surbiton Croquet Club	Alec Thomas	020 8398 2391
Surbiton Golf Club	Secretary	0208 398 3101
Surbiton Hockey Club	Secretary	020 8398 2401
Thames Ditton Lawn Tennis Club	Chris Lewis	07770 562569
Thames Ditton & Esher Golf Club	Mark Rodbard	020 8398 1551
Thames Ditton Squash Club (Colets)	Dave Peck	020 8398 7108
Thames Ditton Cricket Club	Howard Frish (Secretary)	07947 561449

## SOCIETIES AND ASSOCIATIONS

Ember Choral Society	Linda Bridges	020 8399 5402
Esher Recorded Music Society	Miss S. M. Garrat	020 8398 8541
Esher and Molesey Garden Society	Chris Walker (Sec)	020 8398 6651
Esher and District Amnesty International	Cherry Eddy (Campaigns)	020 8398 4377
Hampton Court Way Allotment Association	Lettings: Piotr Hennig	020 8398 5358
Long Ditton Youth Club	Toni Izard	07749 633973
Lynwood Allotment Society	Gill Vickers	020 8398 4870
Molesey and District Antiques Society	Linda Lambert	020 8398 1476
NADFAS (Decorative & Fine Arts) Kingston	Mrs. Valerie Windsor	020 8549 9967
Soroptimist International (Kingston District)	Secretary: Pat Harman	020 8390 3507
Thames Ditton Women's Institute (W.I.)	Secretary	020 8398 8615

## OTHER

Cancer Research UK	Mrs. Vivienne Harris	020 8398 6787
Elmbridge Fairtrade Network	Judy Porter	020 8398 6401
University of the Third Age (U3A)	Hon Sec Anne Brown	01932 881633
Vera Fletcher Hall	Lettings: Fiona Evers	08456 528 529
	Membership: Sue Morris	020 8224 0980

**Please contact the Editor to amend these listings**

# THE THEATRE IN THAMES DITTON

## AT THE VERA FLETCHER HALL

*Saturday 17 September 7.30pm*

*Quartet Pro Musica presents*  
**ODE TO EUROPE**

An evening of European chamber music masterpieces. TICKETS £12.50 (under 16s free)

---

*Sunday 25 September 7.30pm*

*The Chris Read Trio presents*  
**CHRIS, COLE and CARMICHAEL**

Young jazz trio featuring original songs and those of his heroes... Cole Porter and Hoagy Carmichael. TICKETS £14

---

*Friday 7 October 7.30pm*

*Solem Quartet with Jonathan Guy*

An evening recital of three chamber music masterpieces. TICKETS £15 (under 16s free)

---

*Sunday 16 October 7.30pm*

*Linden Wind Orchestra presents*  
**A BIT OF A SONG & DANCE**

A jam-packed programme from waltzes to the West End. A bit of fun for the whole family! TICKETS £12.50

---

*Saturday 22 October 2.30pm*

*Yvonne Arnaud Theatre's Story Pocket :*  
**A POCKETFUL OF GRIMMS**

A collection of some of the most loved and less well known stories collected by the Brothers Grimm. TICKETS £8 **For ages 5+**

---

*Sunday 30 October 7.30pm*

*Christine St John presents*  
**BETTE DAVIS ON THE EDGE**

Motion picture legend, Bette Davis, is waiting anxiously for the reviews of Whatever Happened to Baby Jane. TICKETS £12.50

---

*Sunday 6 November 7.30pm*

*Five Star Swing presents*  
**'HITS FROM THE BLITZ'**

From London's Leicester Square Theatre, the unique 'feel-good' 1940's show. TICKETS £15

---

*Saturday 12 November 7.30pm*

*Isosceles, in association with Useful Idiots presents :* **THE HAUNTERS**

A mystery tale by Patrick Prior, set in Victorian London. TICKETS £12.50

---

*Fri-Sat 18-19 November 7.30pm*

*Yasmine Giles & Special Guest Musicians present :* **'MY NAME IS BARBRA'**

An evening of songs that define the genius of Barbra Streisand. TICKETS £15

---

*Friday 25 November 7.30pm*

*Film Night*  
**SOME LIKE IT HOT**

Considered to be one of the greatest film comedies, starring Marilyn Monroe, Tony Curtis and Jack Lemmon. TICKETS £6

---

*Saturday 26 November 2.30pm*

*Image Musical Theatre presents*  
**BEAUTY AND THE BEAST**

Probably the most popular European fairy tale of all time. TICKETS £8 **For ages 5+**

---

*Saturday 3 December 7.30pm*

*Beatles 4ever UK XMAS CONCERT*

Following their great success earlier this year, the Beatles Tribute band, Beatles 4ever, return promising another great night to remember. TICKETS £17 including welcome drink.

---

**TICKETS:** Online at: [www.verafletcherhall.co.uk](http://www.verafletcherhall.co.uk) or Tel: **0845 680 1926**

or Send a SAE with a cheque (to Vera Fletcher Hall Assoc.) to:-  
VFH Box Office, 8 Copsem Lane, Esher, Surrey KT10 9EU

For up-to-date news, visit our website above and sign up for our Newsletter.

To hire the hall, email/phone Amelia Crafts: [hiring@verafletcherhall.co.uk](mailto:hiring@verafletcherhall.co.uk) / 0845 652 8529



# Claremont Fan Court School

An independent co-educational school for pupils aged 2½ to 18 years

## Sixth Form Open Evening

**Monday 26 September at 6.00pm**

Academic, Music, Sport, Art and Drama Scholarships are available.

Prospective Sixth Form students and their families are welcome to attend. For further information, **tel: 01372 473624** or **email: [info@claremont.surrey.sch.uk](mailto:info@claremont.surrey.sch.uk)**



# ARIES CONSTRUCTION LLP

***GENERAL BUILDING  
EXTENSIONS & LOFT CONVERSIONS  
FULL PLANNING & DRAWING SERVICES  
ROOFING : PLUMBING : ELECTRICAL  
BATHROOM & KITCHEN REFURBISHMENT  
CARPENTRY & JOINERY  
INTERNAL & EXTERNAL REDECORATION  
REPLACEMENT WINDOWS & DOORS  
INSURANCE CLAIMS : FIRE, FLOOD, STORM DAMAGE  
SUBSIDENCE AND UNDERPINNING  
PLASTERING & RENDERING  
GROUNDWORKS & DRAINAGE  
PROPERTY MAINTENANCE***



---

*13 Thames Court, Victoria Avenue  
West Molesey, Surrey KT8 1TP*

---



***Free Estimates – Fast, Efficient, Friendly Service  
Local References Available***

**Tel: 020 8941 9191  
Mobile: 07836 608086  
www.ariesconstruction.co.uk  
Email: aries.construct@hotmail.co.uk**